



**Free Questions for [NSE5\\_FMG-7.2](#) by [go4braindumps](#)**

**Shared by [Hendrix](#) on [15-04-2024](#)**

**For More Free Questions and Preparation Resources**

**[Check the Links on Last Page](#)**

# Question 1

---

Question Type: MultipleChoice

---

Refer to the exhibit.



An administrator is about to add the FortiGate device to FortiManager using the discovery process. FortiManager is operating behind a NAT device, and the administrator configured the FortiManager NATed IP address under the FortiManager system administration settings.

What is the expected result?

**Options:**

---

- A- During discovery FortiManager sets the FortiManager NATed IP address on FortiGate
- B- During discovery FortiManager sets both the FortiManager NATed IP address and NAT device IP address on FortiGate
- C- During discovery FortiManager sets the NATed device IP address on FortiGate
- D- During discovery FortiManager uses only the FortiGate serial number to establish the connection

**Answer:**

---

C

## Question 2

---

**Question Type:** MultipleChoice

---

What is the advantage of using FortiManager to manage FortiAnalyzer?

**Options:**

---

- A- It allows FortiManager to manage all FortiGate devices
- B- It allows FortiManager to run reports based on FortiAnalyzer
- C- It allows FortiManager to store all managed FortiGate device logs

**D-** It allows FortiManager to act as a collector and FortiAnalyzer device

**Answer:**

---

D

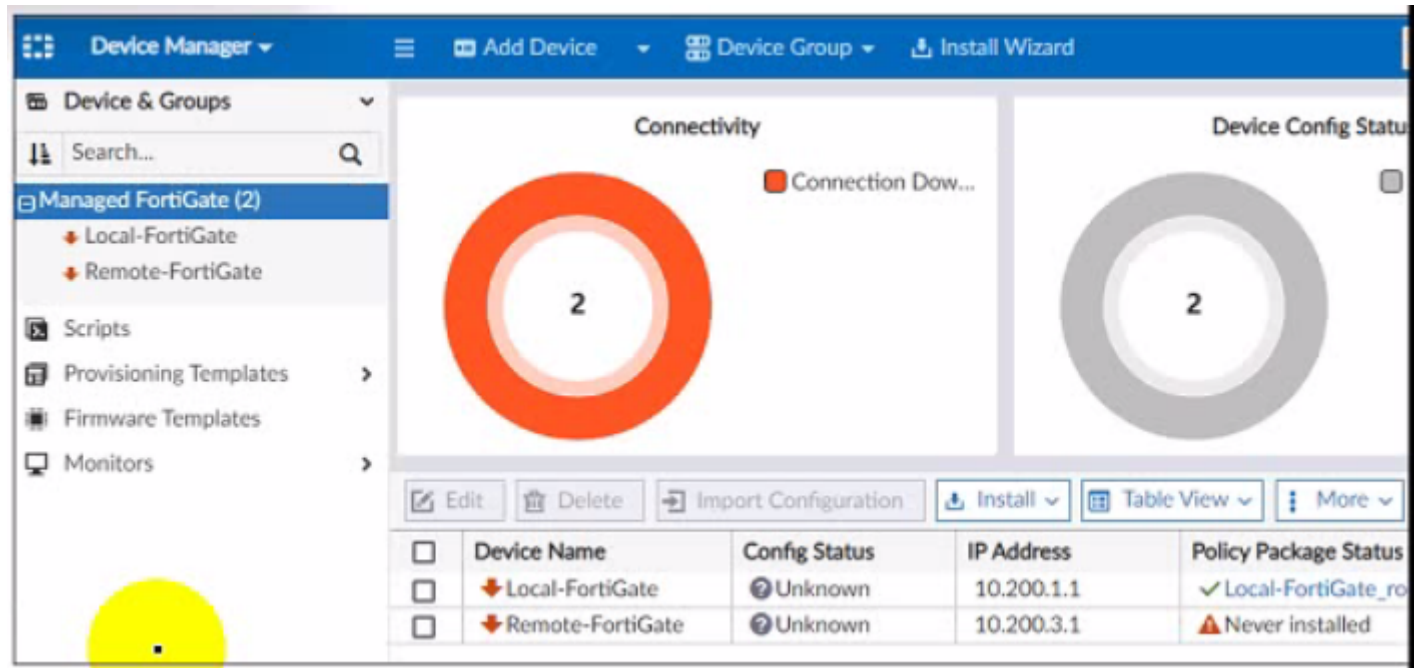
## **Question 3**

---

**Question Type: MultipleChoice**

---

Refer to the exhibit.



A junior administrator is troubleshooting a FortiManager connectivity issue that is occurring with managed FortiGate devices

Given the FortiManager device manager settings shown in the exhibit what can you conclude from the exhibit?

### Options:

- A- The administrator had restored the FortiManager configuration file
- B- The administrator must refresh both devices to restore connectivity
- C- FortiManager test internet connectivity therefore, both devices appear to be down

**D-** The administrator can reclaim the FGFM tunnel to get both devices online

**Answer:**

---

C

## **Question 4**

---

**Question Type: MultipleChoice**

---

Refer to the exhibit.

The screenshot shows the FortiGate Device Manager interface. On the left, a sidebar lists 'Managed FortiGate (2)' with sub-items 'Local-FortiGate' and 'Remote-FortiGate'. The main area is split into two panels: 'Connectivity' and 'Device Config Status'. The 'Connectivity' panel shows a green donut chart with the number '2' and a legend 'Connection Up (2)'. The 'Device Config Status' panel shows an orange donut chart with the number '2' and a legend 'Modified (2)'. Below the charts is a toolbar with buttons for 'Edit', 'Delete', 'Import Configuration', 'Install', 'Table View', and 'More'. A table below the toolbar lists the devices:

<input type="checkbox"/>	Device Name	Config Status	IP Address	Policy Package Status	Provisioning Templates	Firmware Temp
<input checked="" type="checkbox"/>	Local-FortiGate	Modified	10.200.1.1	Local-FortiGate_root	default	
<input type="checkbox"/>	Remote-FortiGate	Modified	10.200.3.1	Never installed	default	

At the bottom right, a context menu is open, showing 'Quick Install (Device DB)' and 'Install Wizard' options. The 'Quick Install (Device DB)' option is highlighted with a red box.

You are using the Quick install option to install configuration changes on the managed FortiGate

Which two statements correctly describe the result? (Choose two)

### Options:

- A- It installs device-level changes on the FortiGate device without launching the Install Wizard
- B- It installs all the changes in the device database first and the administrator must reinstall the changes on the FortiGate device

- C- It provides the option to preview only the policy package changes before installing them
- D- It install provisioning template changes on the FortiGate device

**Answer:**

---

A, D

## Question 5

---

**Question Type: MultipleChoice**

---

Push updates are failing on a FortiGate device that is located behind a NAT device Which two settings should the administrator check?  
(Choose two.)

**Options:**

---

- A- That the virtual IP address and correct ports are set on the NAT device
- B- That the NAT device IP address and correct ports are configured on FortiManager
- C- That the external IP address on the NAT device is set to DHCP and configured with the virtual IP
- D- That the override server IP address is set on FortiManager and the NAT device



**Answer:**

---

B, C

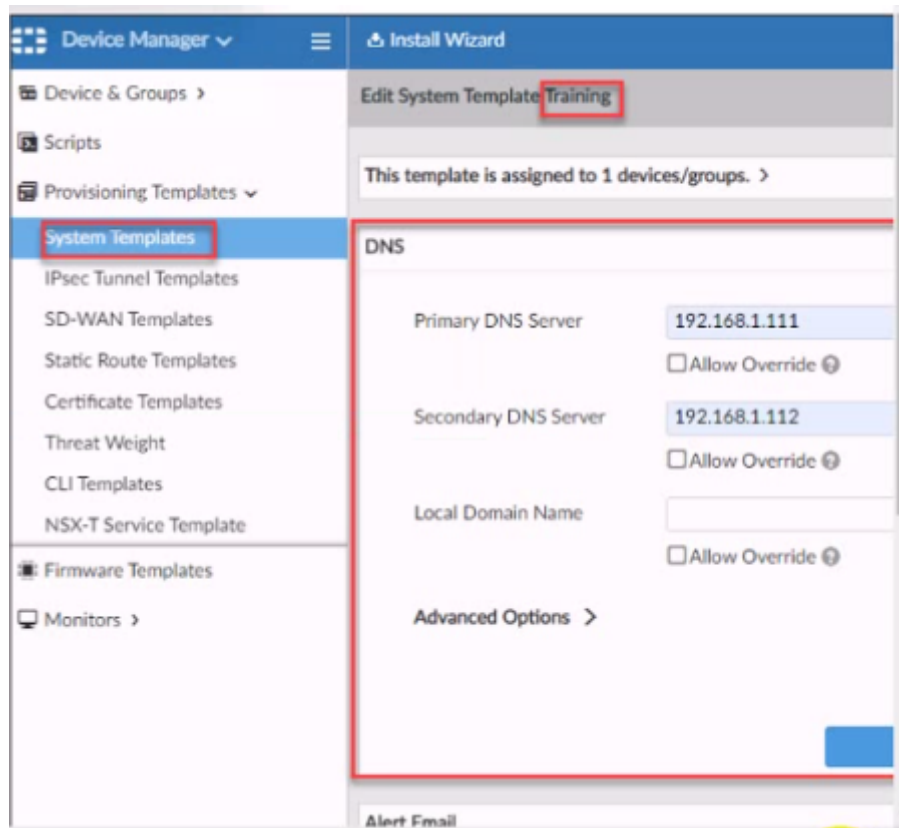
## **Question 6**

---

**Question Type: MultipleChoice**

---

Refer to the exhibit.



According to the error message why is FortiManager failing to add the FortiAnalyzer device?

### **Options:**

- A-** The administrator must turn off the Use Legacy Device login and add the FortiAnalyzer device to the same network as Forti-Manager
- B-** The administrator must select the Forti-Manager administrative access checkbox on the FortiAnalyzer management interface

- C- The administrator must use the Add Model Device section and discover the FortiAnalyzer device
- D- The administrator must use the correct user name and password of the FortiAnalyzer device

**Answer:**

---

A

## Question 7

---

**Question Type: MultipleChoice**

---

An administrator is in the process of moving the system template profile between ADOMs by running the following command:

```
execute improfile import-profile ADOM2 3547 /tmp/myfile
```

Where does the administrator import the file from?

**Options:**

---

A- File system

B- ADOM1

**C-** ADOM2 object database

**D-** ADOM2

**Answer:**

---

A

## Question 8

---

**Question Type: MultipleChoice**

---

In addition to the default ADOMs, an administrator has created a new ADOM named Training for FortiGate devices. The administrator authorized the FortiGate device on FortiManager using the Fortinet Security Fabric.

Given the administrator's actions, which statement correctly describes the expected result?

**Options:**

---

**A-** The FortiManager administrator must add the authorized device to the Training ADOM using the Add Device wizard only.

**B-** The authorized FortiGate will be automatically added to the Training ADOM.

**C-** The authorized FortiGate will appear in the root ADOM.

**D-** The authorized FortiGate can be added to the Training ADOM using FortiGate Fabric Connectors.

**Answer:**

---

C

**To Get Premium Files for NSE5\_FMG-7.2 Visit**

[https://www.p2pexams.com/products/nse5\\_fm-g-7.2](https://www.p2pexams.com/products/nse5_fm-g-7.2)

**For More Free Questions Visit**

<https://www.p2pexams.com/fortinet/pdf/nse5-fmg-7.2>

