



**Free Questions for HPE0-V17 by ebraindumps**

**Shared by Salinas on 06-06-2022**

**For More Free Questions and Preparation Resources**

**Check the Links on Last Page**

# Question 1

---

**Question Type:** MultipleChoice

---

You are organizing a Proof-of-Concept (POC) for your customer for their new data protection solution based on Commvault technology in combination with HPE Nimble storage and HPE StoreOnce backup targets.

The customer asks you to demonstrate the configuration options for deduplication within the Commvault solution

is this a location where you can modify the deduplication parameters?

Solution: Navigate to the Agents section and show the different parameters inside the Backup. Archive, Normalization and Replication agents

## Options:

---

**A-** Yes

**B-** No

## Answer:

---

A

## Question 2

---

**Question Type:** MultipleChoice

---

You are organizing a Proof-of-Concept (PCX:) for your customer for their new data protection solution based on Commvault technology in combination with HPE Nimble storage and HPE StoreOnce backup targets.

The customer asks you to demonstrate the configuration options for deduplication within the Commvault solution. Is this a location where you can modify the deduplication parameters?

Solution: Access the Advanced Client Properties screen under Client Computers

### Options:

---

A- Yes

B- No

### Answer:

---

B

## Question 3

---

**Question Type: MultipleChoice**

---

Is this a supported integration with StoreOnce Catalyst?

Solution: Microsoft SharePoint

**Options:**

---

**A-** Yes

**B-** No

**Answer:**

---

A

## Question 4

---

**Question Type: MultipleChoice**

---

Is this a valid statement regarding Commvault components?

Solution: For larger environments where high availability is critical, the CommServe server can be clustered

**Options:**

---

A- Yes

B- No

**Answer:**

---

B

## Question 5

---

**Question Type: MultipleChoice**

---

Is this a valid statement regarding Commvault components?

Solution: A Client Is a software module that is installed on a client computer to protect a specific type of data

**Options:**

---

A- Yes

**B-** No

**Answer:**

---

A

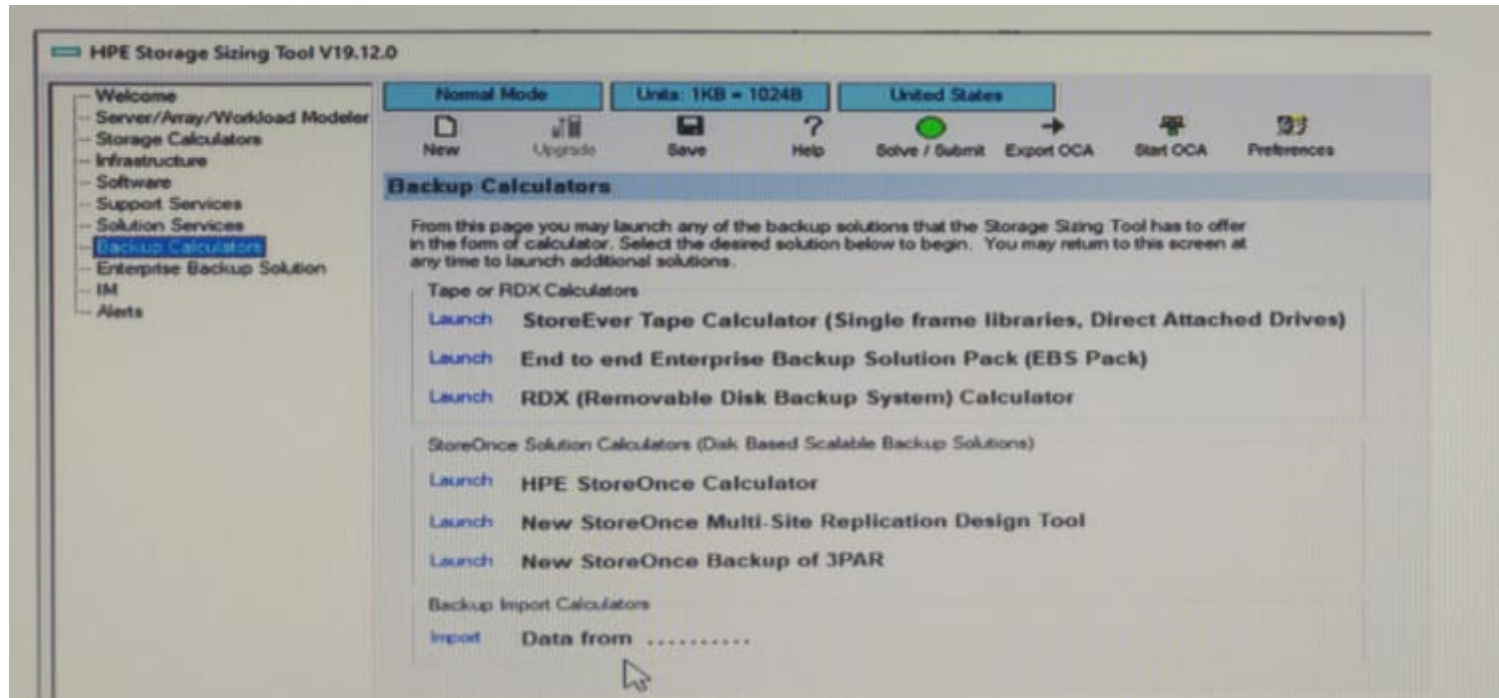
## **Question 6**

---

**Question Type: MultipleChoice**

---

Refer to the exhibit.



You plan to use the HPE Storage Sizing Tool for an HPE backup environment, as shown in the exhibit

Instead of manually entering all gathered information, you want to use the Import option for fast and efficient sizing of a backup environment.

Is this a tool that generates data that can be imported to the HPE Storage Sizing Tool?

Solution: Is this a tool that generates data that can be imported to the HPE Storage Sizing Tool?

NinjaProtected+

**Options:**

---

A- Yes

B- No

**Answer:**

---

A

## Question 7

---

**Question Type: MultipleChoice**

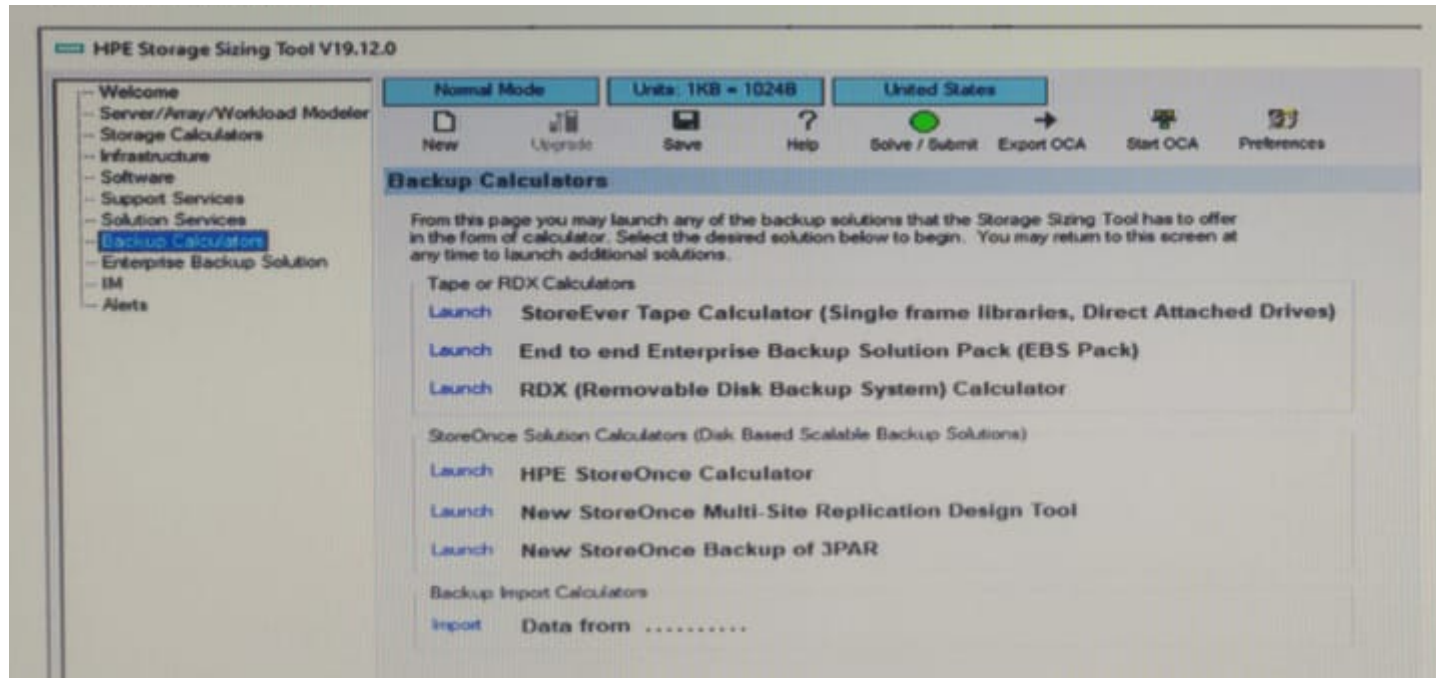
---

Refer to the exhibit.

You plan to use the HPE Storage Sizing Tool for an HPE backup environment, as shown in the exhibit

instead of manually entering all gathered information, you want to use the import option for fast and efficient sizing of a backup environment.





is this a tool that generates data that can be imported to the HPE Storage Sizer Tool?

Solution: DD Analyzer

### Options:

---

A- Yes

B- No

**Answer:**

---

B

## Question 8

---

**Question Type:** MultipleChoice

---

A customer contacts you for assistance with performance troubleshooting of their backup environment because over the last few days they notice increasing times for backup completion. They see no apparent reason for this, since the data volume to be backed up did not change unusually compared to the previous days and weeks.

You also notice that the deduplication ratio, historically steady at about 20:1, is now gradually declining.

Is this a potential cause or the problem?

Solution: There might be a network bottleneck, which could increase backup times. Verify the network traffic.

**Options:**

---

A- Yes

B- No

**Answer:**

---

A

## Question 9

---

**Question Type:** MultipleChoice

---

A customer contacts you for assistance with performance troubleshooting of their backup environment because over the last few days they notice increasing times for backup completion. They see no apparent reason for this, since the data volume to be backed up did not change unusually compared to the previous days and weeks.

You also notice that the deduplication ratio, historically steady at about 20:1, is now gradually declining.

Is this a potential cause or the problem?

Solution: Ransomware is encrypting data, making the daily incremental backups grow and lowering the deduplication ratio due to new content.

**Options:**

---

**A-** Yes

**B-** No

**Answer:**

---

A

## Question 10

---

**Question Type: MultipleChoice**

---

A customer contacts you for assistance with performance troubleshooting of their backup environment because over the last few days they notice increasing times for backup completion. They see no apparent reason for this, since the data volume to be backed up did not change unusually compared to the previous days and weeks.

You also notice that the deduplication ratio, historically steady at about 20:1, is now gradually declining.

Is this a potential cause of the problem?

Solution: Ransomware is encrypting data, making the daily incremental backups grow and lowering the deduplication ratio due to new content.

**Options:**

---

**A-** Yes

**B-** No

**Answer:**

---

B

**To Get Premium Files for HPE0-V17 Visit**

**<https://www.p2pexams.com/products/hpe0-v17>**

**For More Free Questions Visit**

**<https://www.p2pexams.com/hp/pdf/hpe0-v17>**

