



Free Questions for HPE3-U01 by vceexamstest

Shared by Reid on 15-04-2024

For More Free Questions and Preparation Resources

Check the Links on Last Page

Question 1

Question Type: MultipleChoice

What are the differences between Local-based and Server-based management? (Select two.)

Options:

- A- server-based management cannot talk to the device's control plane, local-based can
- B- in local-based, the managed device is a client, while in server-based it is a server
- C- local-based management can use the device's console port, server-based cannot
- D- local-based management requires an on-premises network management appliance
- E- server-based management can monitor multiple devices at once, local-based cannot

Answer:

B, C

Question 2

Question Type: MultipleChoice

On which connection type are collisions more likely to happen?

Options:

A- Dark Fiber

B- Fiber

C- Copper

D- Wi-Fi

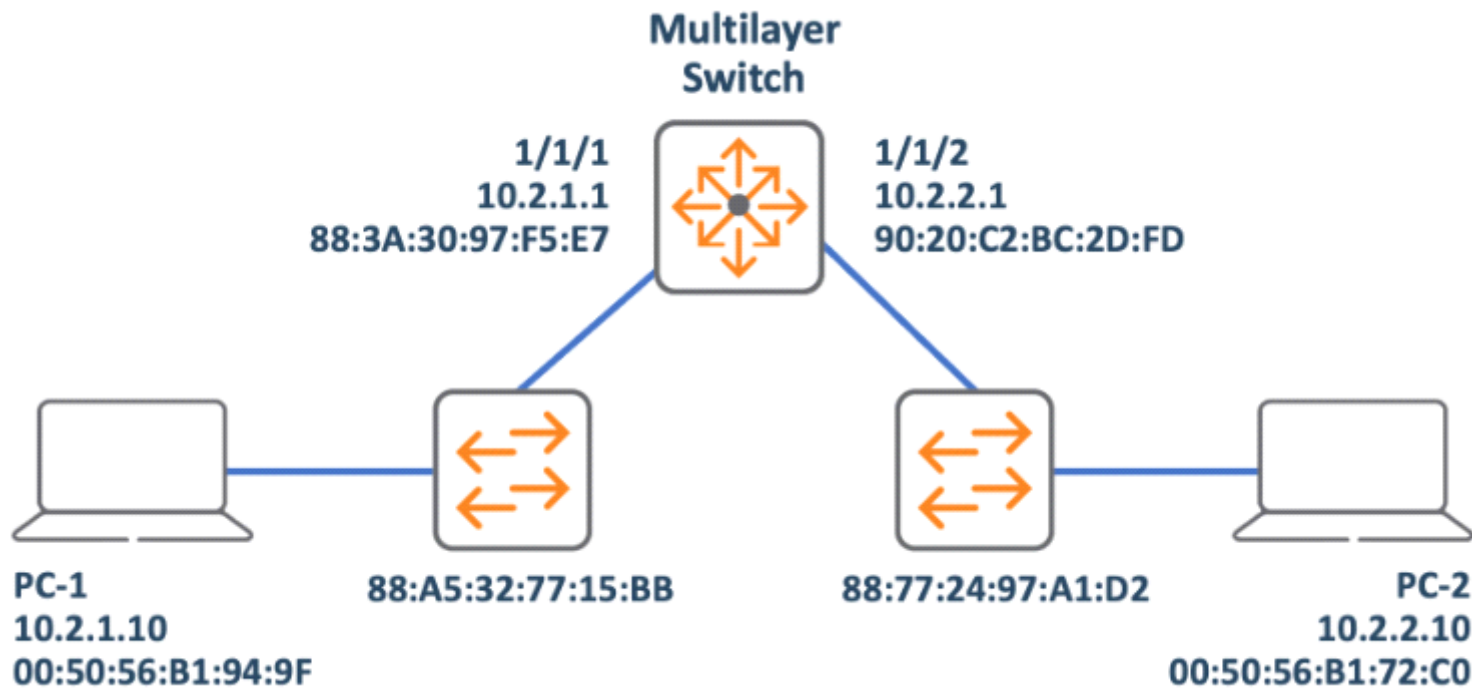
Answer:

D

Question 3

Question Type: MultipleChoice

Refer to exhibit:



PC-1 is sending a packet to PC-2. What are the Layer 2 and Layer 3 source addresses of the message when it is received by PC-2? (Select two.)

Options:

- A- source MAC is 90:20:C2:BC:2D:FD
- B- destination MAC is 88:77:24:97:A1:D2

C- source IP is 10.2.1.10

D- source MAC is 00:50:56:B1:94:9F

E- source IP is 10.2.2.1

Answer:

A, B

Question 4

Question Type: MultipleChoice

Which characteristic allows switches to mitigate collisions?

Options:

A- The switches support VLANs that segment the collision domains.

B- The switches use L3 protocols that eliminate collisions.

C- The switches' ports are independent collision domains.

D- The switches have proprietary features that help eliminate collisions.

Answer:

A

Question 5

Question Type: MultipleChoice

Exhibit:

CREATE A NEW NETWORK



What are valid configurable "Client VLAN Assignment" options for a Bridge-based WLAN in Aruba Central? (Select three.)

Options:

A- native VLAN

B- automatic VLAN

C- hybrid VLAN

D- static VLAN

Answer:

D

Question 6

Question Type: MultipleChoice

Which statements are true about a router? (Select two.)

Options:

- A-** They are considered layer two devices.
- B-** They utilize protocols to learn all possible paths.
- C-** They are considered layer four devices.
- D-** They are considered layer three devices.
- E-** They analyze source addresses to learn paths.

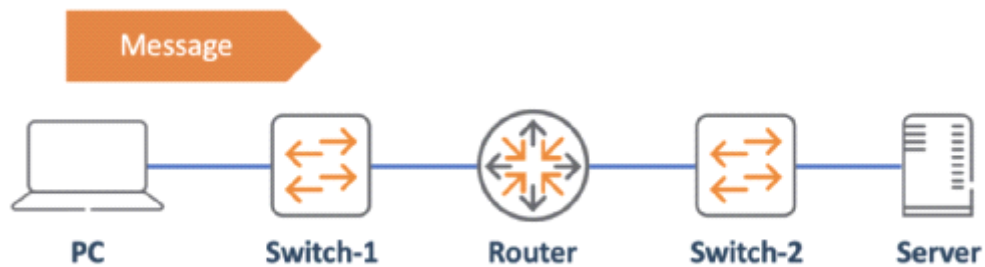
Answer:

D, E

Question 7

Question Type: MultipleChoice

Refer to Exhibit.



The PC is sending a message to the server. Which devices have performed Layer 2 encapsulation by the time the message arrives at the server? (Select two.)

Options:

- A- PC
- B- Server
- C- Router
- D- switch-2
- E- Switch-1

Answer:

D, E

Question 8

Question Type: MultipleChoice

Which Wi-Fi frame announces the Service Set Identifier (SSID) to Basic Service Set Identifier (BSSID) mapping?

Options:

- A- association request
- B- probe request

C- beacon

D- network allocation vector

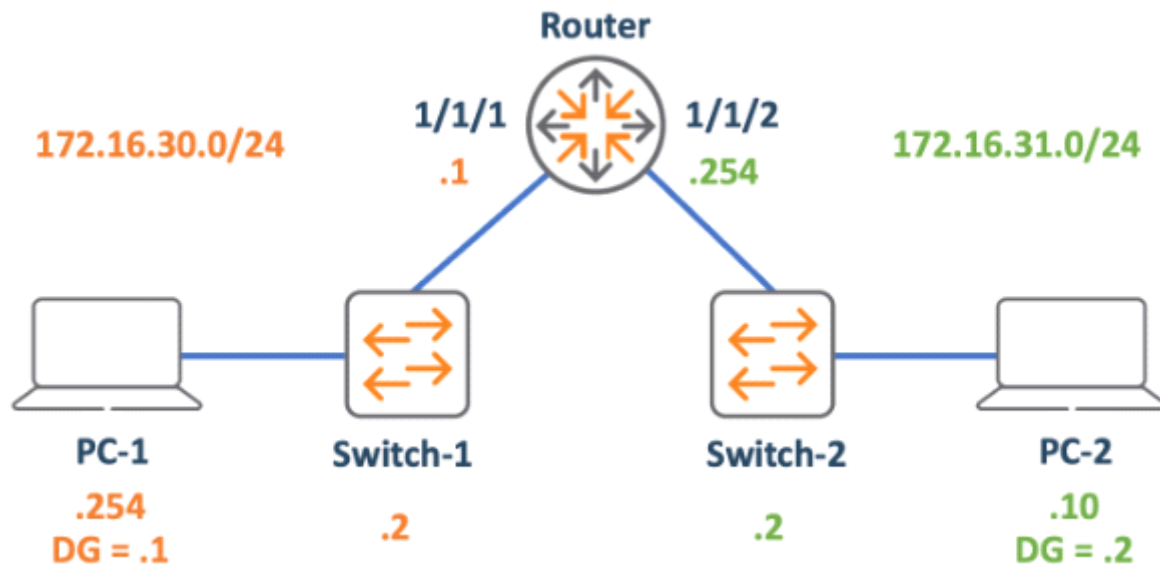
Answer:

B

Question 9

Question Type: MultipleChoice

Refer to Exhibit.



The PCs are not able to successfully establish bidirectional communication. What change must you deploy to enable the communication between PC-1 and PC-2?

Options:

-
- A- change PC-1 's default gateway to 172.16.30.2
 - B- change PC-1's IP address to 172.16.30.10
 - C- change the Router's 1/1/1 interface IP to 172.16.30.254
 - D- change PC-2's default gateway to 172.16.31.254

Answer:

C

Question 10

Question Type: MultipleChoice

Why do clients run the Address Resolution Protocol (ARP)?

Options:

- A-** To discover the destination address of the Layer 3 header of IP packets.
- B-** To discover the source address of the Layer 3 header of IP packets.
- C-** To discover the destination address of the Layer 2 header that encapsulates IP packets.
- D-** To discover the source address of the Layer 2 header that encapsulates IP packets.

Answer:

B

Question 11

Question Type: MultipleChoice

Which condition allows 5Ghz channels to avoid Adjacent Channel Interference?

Options:

- A- transmit at 40 MHz bandwidth
- B- transmit at high power levels
- C- transmit at low power levels
- D- transmit at 20 MHz bandwidth

Answer:

A

Question 12

Question Type: MultipleChoice

What is a true statement about wireless communications using Wi-Fi?

Options:

- A- Amplitude, phase, and frequency of radio waves are modulated to transmit data
- B- Wireless communications have a maximum range of 10 meters (30 feet)
- C- Amplitude, phase, and frequency of radio waves are modulated to increase range
- D- Wireless communications have a minimum range of 10 meters (30 feet)

Answer:

C

To Get Premium Files for HPE3-U01 Visit

<https://www.p2pexams.com/products/hpe3-u01>

For More Free Questions Visit

<https://www.p2pexams.com/hp/pdf/hpe3-u01>

