



Free Questions for H12-831_V1.0 by ebraindumps

Shared by Roth on 29-01-2024

For More Free Questions and Preparation Resources

Check the Links on Last Page

Question 1

Question Type: MultipleChoice

Regarding the BGPI MPLS IPVPN network architecture, which of the following descriptions is wrong?

Options:

- A-** PThe device only needs to have the basicM PLSForwarding capability, not maintainedVPNRelated Information
- B-** between sites viaVPNMutual visits, a site can only belong to1indivuaVPN
- C-** In general,CEThe device does not perceiveVPNexistence, andCEDevice does not require supportMPLS,MP-BGP
Wait
- D-** BGP/MPLS IP VPNnetwork architecture byCE(CustomerEdge).PE(ProviderEdge)and P(Provider)consists of three parts, includingPEandPis operator equipment,CEYesBGP/MPLS IPVPNUser settings prepare

Answer:

B

Question 2

Question Type: MultipleChoice

What is the default aging time of the MA, C address table of Huawei switches?

Options:

A- 300

B- 500

C- 400

D- 5

Answer:

A

Question 3

Question Type: MultipleChoice

Network administrator A wants to use A, CL to match only the four routing entries 1 and 3.57 in the figure. Ask the network administrator

A at least how many A, CL rules do you need to configure?

Num Route

1	10.0.1.0/24
2	10.0.2.0/24
3	10.0.3.0/24
4	10.0.4.0/24
5	10.0.5.0/24
6	10.0.6.0/24
7	10.0.7.0/24

Options:

A- 2

B- 1

C- 4

D- 3

Answer:

B

Question 4

Question Type: MultipleChoice

What is the LSA whose flooding range is the entire autonomous system in SPFV3?

Options:

- A- Link-LSA
- B- As-external-LSA
- C- Inter-Area-Prefix-LSA
- D- Intra-Area-Prefix-LSA

Answer:

B

Question 5

Question Type: MultipleChoice

A campus deploys both IPv4 and IPv6 networks for service testing, and runs IS-IS to realize network interconnection. The IS-IS routing protocol has good scalability and is widely used in the existing network. Which of the following statements is true about IS-IS scalability?

Options:

- A- IS-IS uses TLV structure to build the message so that IS-IS has more flexibility, flexibility and scalability
- B- for IS-IS in terms of adding new features, only adding new TLV is just
- C- IS-IS supports IPv6 to add TLV to carry IPv6 address information
- D- No. IS-IS supports IPv6 by adding a TLV

Answer:

A, B, C

Question 6

Question Type: MultipleChoice

The input information of a router is as follows. Which of the following causes the OSPF adjacency cannot be established normally?

```

<Huawei>display ospf error interface GigabitEthernet 0/0/0
OSPF Process 1 with Router ID 10.0.12.2
OSPF error statistics

Interface: GigabitEthernet0/0/0 (10.0.12.2)
General packet errors:
0 :Bad version 0 :Bad checksum
1 :Bad area id 0 :Bad authentication type
10 :Bad authentication key 0 :Unknown neighbor
0 :Bad net segment 0 :Extern option mismatch
0 :Router id confusion

BHELLO packet errors:
0 :Netmask mismatch 1 :Hello timer mismatch
Bo :Dead timer mismatch 0 :Invalid Source Address

```

Options:

- A- Area code does not match
- B- Inconsistent area type
- C- interface IP inconsistent address masks
- D- Hello timer inconsistent message sending interval

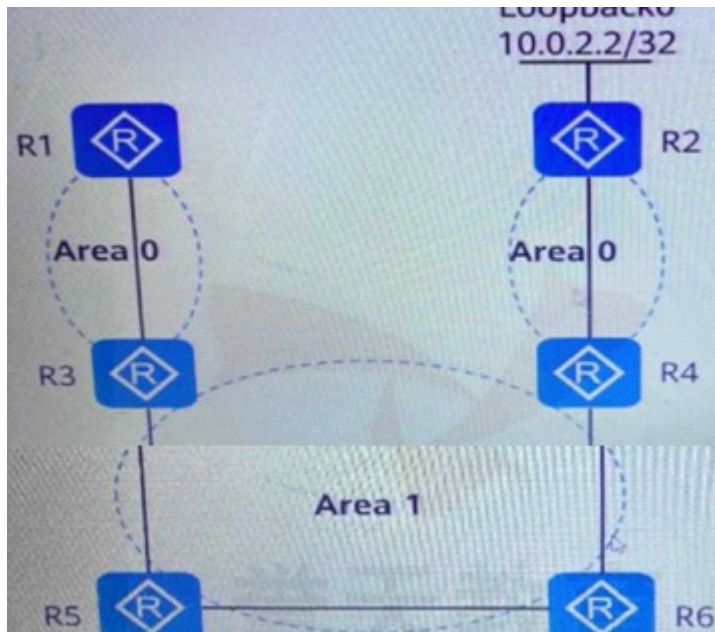
Answer:

A, D

Question 7

Question Type: MultipleChoice

As shown in the figure, OSPF is enabled on all interfaces of the router. Which of the following statements is correct?



Options:

- A- R2 in the area0 generated in Type1 LSA contains 10.0.2.2/32 routing information
- B- R2 in the area0 generated in Type5 LSA contains 10.0.2.2/32 routing information
- C- R2 in the area0 generated in Type2 LSA contains 10.0.2.2/24 routing information
- D- R2 in the area0 generated in Type3 LSA contains 10.0.2.2/32 routing information

Answer:

A

Question 8

Question Type: MultipleChoice

Configured on an interface: isis timer hello 5 level-2, which of the following statements is correct?

Options:

- A- the interface Level-2 of hello The packet sending interval is 5s
- B- the interface Level-1 and Level-2 of hello. The packet sending interval is 3s
- C- the interface Level-2 of CSNP The packet sending interval

Answer:

A

Question 9

Question Type: MultipleChoice

As shown in the figure, MPLS LSP is set up in the network, and the goal is to establish an LDP session between SWA and SWB.

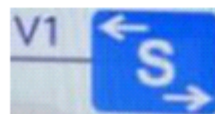
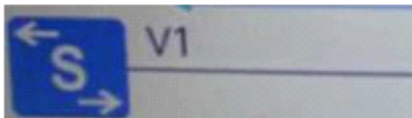
```
[SWA]mpls lsr-id 1.1.1.1 [SWA]mpls [SWA-  
mp(s)mpls ldp [SWA-mpls-ldp]qui [SWA]inte  
V1  
[SWA-Vlanif1]mpls [SWA-Vlanif1]mpls ldp
```

SWA LDP Session

```
[SWB]mpls lsr-id 1.1.1.1  
(SWB]mpts [SWB-  
mpls]mpls ldp [SWBmpls-  
ldp]qui [SWB]inte V1  
[SWB-Vlanif1]mpls [SWB-  
Vlanif1 ] mpl s ldp
```



SWB



Options:

- A- Configured correctly
- B- No global enable requiredMPLS
- C- No need to enable on the portMPLS
- D- two devicesmpls lsr-idcannot be configured the same

Answer:

D

Question 10

Question Type: MultipleChoice

From this picture, we can judge

<RI>display bgp ipv6 routing-table	
Total Number of Routes: 2	
Network : 3002:3	PrefixLen : 128
NextHop 300: the ninth of the top Heavenly Stems DE A2	LocPrf : 100
MED: 0	PrefVal 0
Path/Ogn-ii	
•>i Network 3002:4	PrefixLen: 128
NextHop 3000: FDEA:3	LocPrf WO
MED	PrefVal 0
Path/Ogn 65001 i	

Options:

- A- If not configured about AS_Path routing strategy, then 3002:-4/128 --- must not originate from AS 65001
- B- R1 does not have 3002:3/128 and 3002:-4/128 routing
- C- R1 has 3002:-3/128 and 3002:.4/128 routing
- D- If not configured about AS_Path routing strategy, then 3002:4/28 must have originated from AS 65001

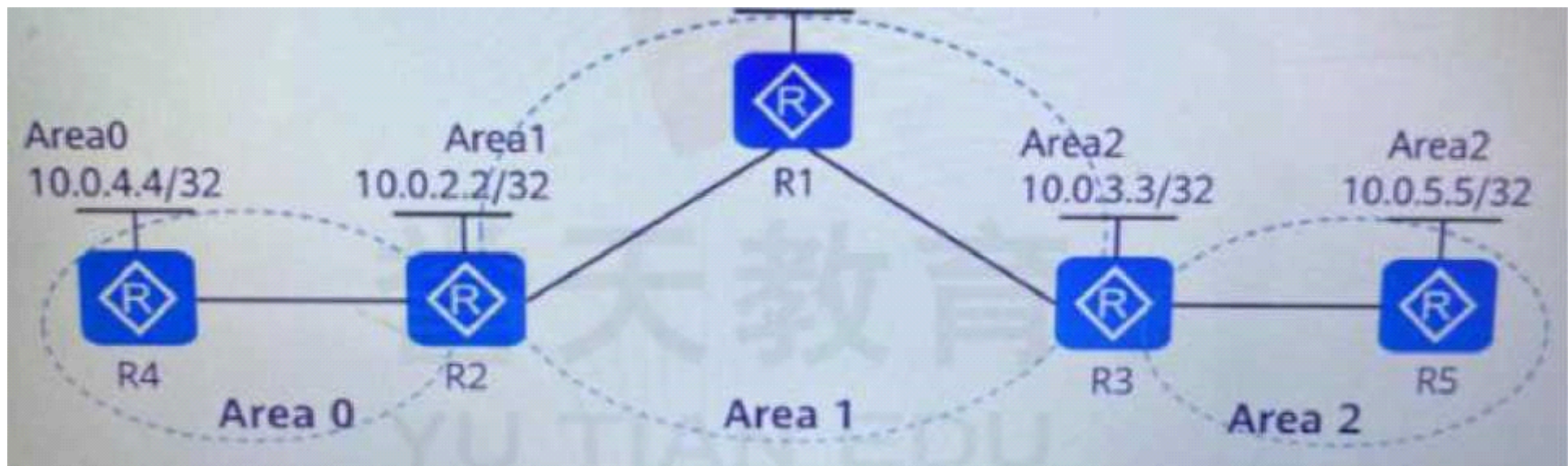
Answer:

C, D

Question 11

Question Type: MultipleChoice

As shown in the figure, OSPF is enabled on all the routers. The IP address marked in the figure is the IP address of the loopbackO interface of the device. The LoopbackO of R1 and R2 is advertised in area 1, the LoopbackO of R4 is advertised in area 0, and the LoopbackO of R3 and R5E is advertised in area 0. In area 2, which of the following IP addresses can ping each other?



Options:

- A- 10.0.2.2 and 10.0.3.3 (Non-backbone area received 3 class received does not count)
- B- 10.0.3.3 and 10.0.5.5 (same area 1 kind)
- C- 10.0.4.4 and 10.0.2.2 (normal calculation 3 kind)
- D- 10.0.2.2 and 10.0.5.5 (Non-backbone area received 3 class received does not count)

Answer:

B, C

Question 12

Question Type: MultipleChoice

The correct description for the configuration on this switch is:

```
[Huawei]dhcp enable
```

```
[Huawei]interface Vlanif 100 [Huawei-Vlanif 100]dhcp select relay
```

```
[Huawei]dhcp enable
[Huawei]interface Vlanif 100 [Huawei-Vlanif 100]dhcp select relay
```

Options:

- A- YoujizhiDHCPYuegen server and mouthDHCP relayByKmust be enabled globallyDHCP
- B- forVLAN100interface designationDHCPThe server group isdhcpgroup!
- C- First you need to createDHCPmonth starter group and add to server groupDHCPserver
- D- VANIF100The interface will receive theDHCPmessage, sent to the outside through the relayDHCP Server

Answer:

A, B, C, D

To Get Premium Files for H12-831_V1.0 Visit

https://www.p2pexams.com/products/h12-831_v1.0

For More Free Questions Visit

<https://www.p2pexams.com/huawei/pdf/h12-831-v1.0>

