



Free Questions for ATTA by [braindumpscollection](#)

Shared by [Frank](#) on [15-04-2024](#)

For More Free Questions and Preparation Resources

[Check the Links on Last Page](#)

Question 1

Question Type: MultipleChoice

Which of the following is a valid way to calculate the cyclomatic complexity? 1 credit [K2]

Options:

- A- Number of decisions + 2
- B- Number of enclosed regions - 1
- C- Number of statements - 2
- D- Links - Nodes + 2

Answer:

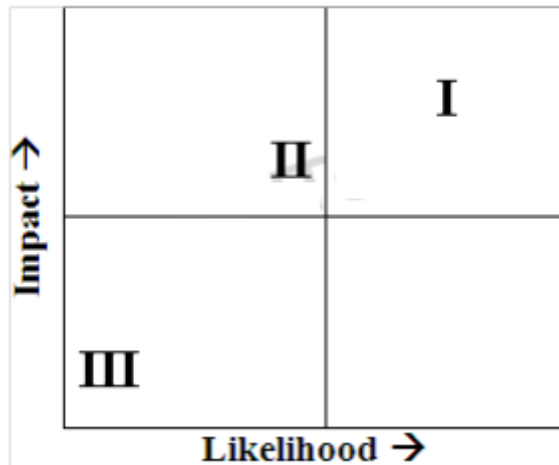
D

Question 2

Question Type: MultipleChoice

Part 1 "Test Techniques various"

The result of a product risk analysis performed on components I, II and III of the airplane control system shows the following risk matrix:



The project wants to mitigate the risks by defining different types of coverage depending on the risk level of the components. Which of the following would be a meaningful solution for setting the coverage targets? 2 credits [K3]

Options:

- A- I: Condition determination coverage, II: Decision Coverage, III: Statement coverage
- B- I: Condition determination coverage, II: Statement coverage, III: Decision coverage
- C- I: Decision coverage, II: Condition determination coverage, III: Statement Coverage

D- I: Multiple condition coverage, II: Decision coverage, III: Condition determination coverage

Answer:

A

Question 3

Question Type: MultipleChoice

Part 1 "Test Techniques various"

A component has been analyzed as being highly critical. Which of the following structure-based test design techniques provides the highest level of coverage? 1 credit [K2]

Options:

- A-** Statement testing
- B-** Decision testing
- C-** Condition determination testing
- D-** Multiple condition testing

Answer:

C

Question 4

Question Type: MultipleChoice

Part 1 "Test Techniques various"

As part of a risk analysis, technical risks are analyzed. Which TWO factors influence technical risk? 1 credit [K2]

Options:

- A- Complexity of technology
- B- Frequency of use of the affected failure
- C- Interfacing and integration issues
- D- Damage to image
- E- Lack of reasonable workaround

Answer:

A, C

Question 5

Question Type: MultipleChoice

Part 1 "Test Techniques various"

If you are flying with an economy ticket, there is a possibility that you may get upgraded to business class, especially if you hold a gold card in the airline's frequent flier program. If you don't hold a gold card, there is a possibility that you will get 'bumped' off the flight if it is full and you check in late. This is shown in the figure hereafter. Note that each box (i.e. statement) has been numbered.

Three tests have been run:

Test 1: Gold card holder who gets upgraded to business class

Test 2: Non-gold card holder who stays in economy

Test 3: A person who is bumped from the flight

What is the statement coverage of these three tests? 2 credits [K4]

Options:

A- 60%

B- 70%

C- 80%

D- 90%

Answer:

C

Question 6

Question Type: MultipleChoice

Part 1 "Test Techniques various"

If we say that a set of tests has achieved 100% structural decision coverage on a particular module in a program, what does that mean?

1 credit [K2]

Options:

A- That all bugs present in that module were necessarily revealed by those tests.

- B-** That every control flow branch had been executed at least once by those tests.
- C-** That every dataflow in that module was exercised at least once by those tests.
- D-** That every path through that module was exercised at least once by those tests.

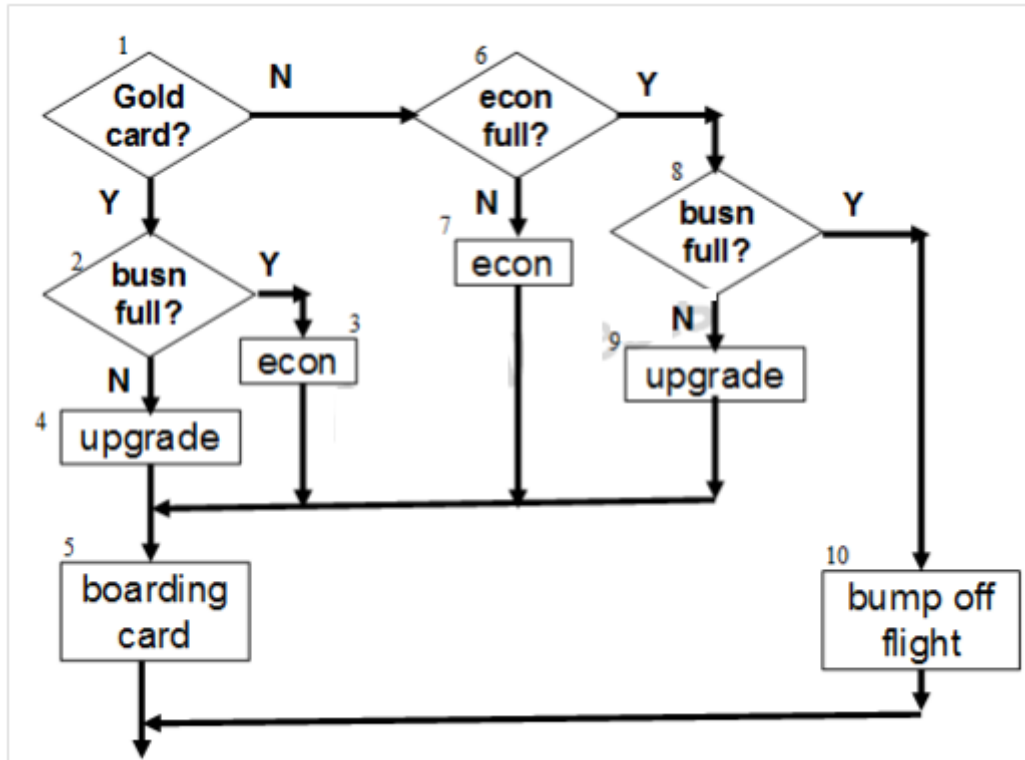
Answer:

B

Question 7

Question Type: MultipleChoice

Part 1 "Test Techniques various"



Definition-use pairs are identified during which of the following static analysis activities? 1 credit [K2]

Options:

- A- Control flow analysis
- B- Data flow activities

- C- Coding standards analysis
- D- Cyclomatic complexity analysis

Answer:

B

Question 8

Question Type: MultipleChoice

Part 1 "Test Techniques various"

Which of the following is a dynamic analysis technique related to improving application performance? 1 credit [K2]

Options:

- A- Code complexity analysis
- B- Profiling
- C- Network package sniffing

D- Spelling and grammar checking

Answer:

B

Question 9

Question Type: MultipleChoice

Part 1 "Test Techniques various"

An embedded software company is considering to improve the quality of its software components to be delivered to the integration team. After studying various experience papers that report a higher level of quality for software components, two main alternative techniques are identified:

static analysis and dynamic analysis.

In deciding which one is most applicable and how they relate to each other a detailed study is performed. Which of the following are TWO key similarities between static analysis and dynamic analysis? 2 credits [K4]

Options:

- A- Both are performed using requirements as its major input document
- B- Both are usually undertaken by integration testers
- C- Both are usually undertaken by development during coding and unit testing
- D- Both are related to reviews
- E- Both usually use a tool

Answer:

C, E

Question 10

Question Type: MultipleChoice

How many test cases would be needed to achieve 100% decision coverage? 1 credit [K2]

Options:

A- 1

B- 2

C- 3

D- 4

Answer:

A

To Get Premium Files for ATTA Visit

<https://www.p2pexams.com/products/atta>

For More Free Questions Visit

<https://www.p2pexams.com/istqb/pdf/atta>

