



**Free Questions for JN0-1302 by certsdeals**

**Shared by Flynn on 07-06-2022**

**For More Free Questions and Preparation Resources**

**Check the Links on Last Page**

## Question 1

---

**Question Type:** MultipleChoice

---

You must include high availability features when designing part of a data center. Every network device in this part of the data center only has one routing engine. Which high availability feature should you use in this scenario?

**Options:**

---

- A) GRES
- B) NSB
- C) graceful restart
- D) NSR

**Answer:**

---

B

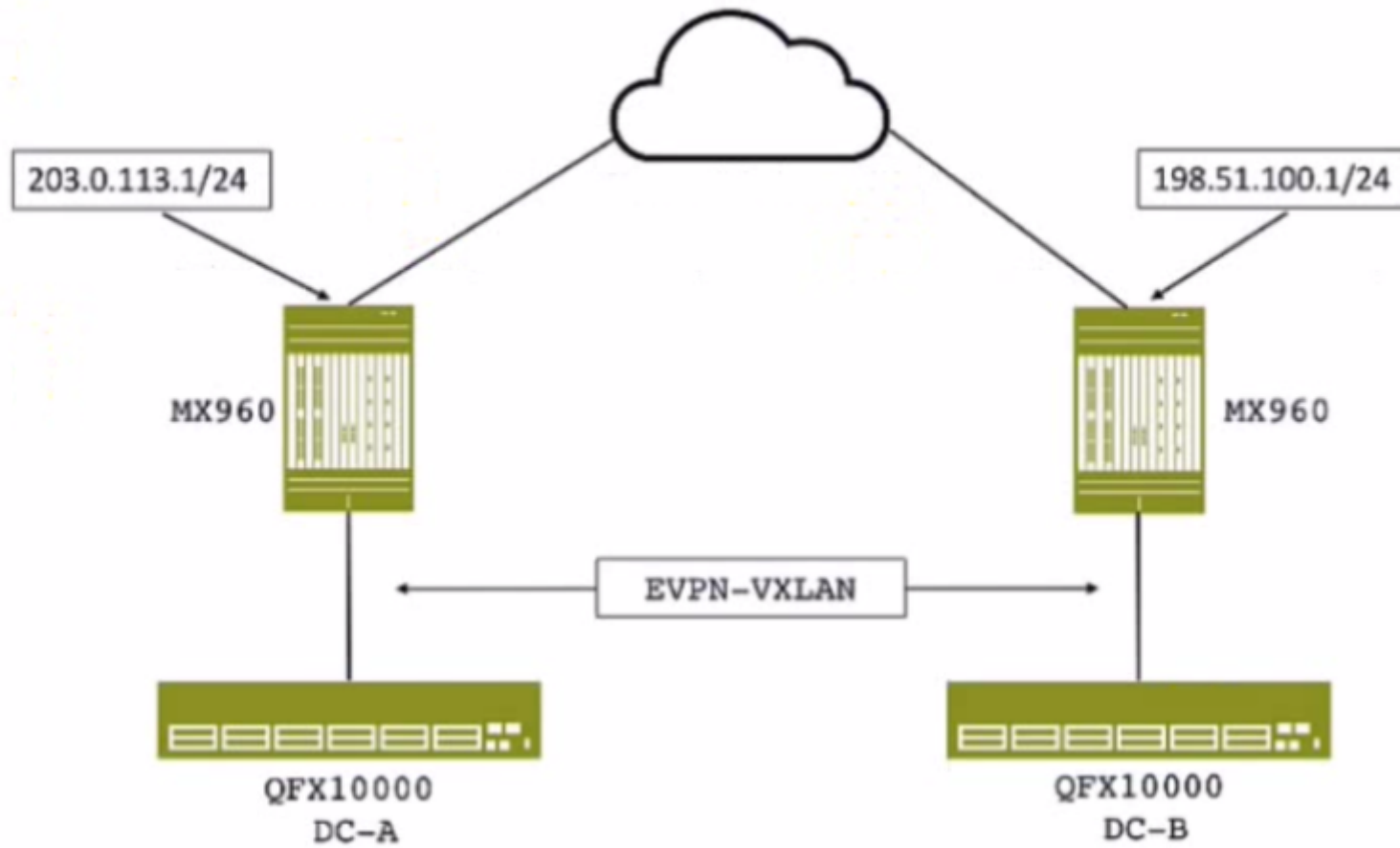
## Question 2

---

**Question Type:** MultipleChoice

---

Exhibit.



You are designing a Data Center Interconnect to transport VXLAN traffic between DC-A and DC-B

Which two technologies will allow the MX Series routers to transport the VXLAN packets over the WAN, as shown in the exhibit?  
(Choose two)

**Options:**

---

- A) VPLS
- B) Layer 2 VPN
- C) IP routing
- D) Layer 3 VPN

**Answer:**

---

A, D

## Question 3

---

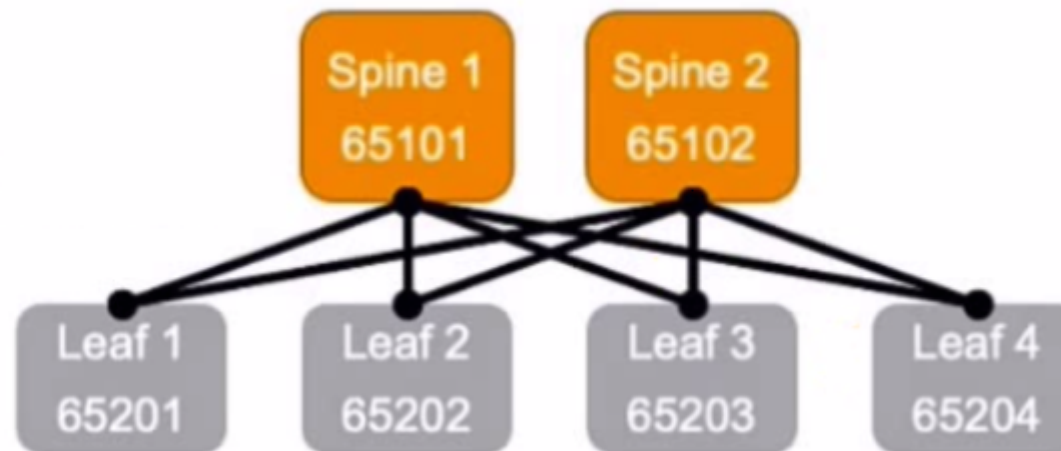
**Question Type:** MultipleChoice

---

Exhibit.

Spine Nodes  
QFX5110-32Q

Leaf Nodes  
QFX5100-48S



Given the information shown below.

2 spine nodes with (4) 40GbE interfaces each

4 leaf nodes. ~ Each leaf node has half-utilized (24) 10GbE interfaces,

-- Each leaf node has (1) 40GbE interface to each of the 2 spine nodes

What is the oversubscription ratio for the IP fabric shown in the exhibit?

**Options:**

---

A) 2:1

B) 1:1

C) 4:1

D) 3:1

**Answer:**

---

C

## Question 4

---

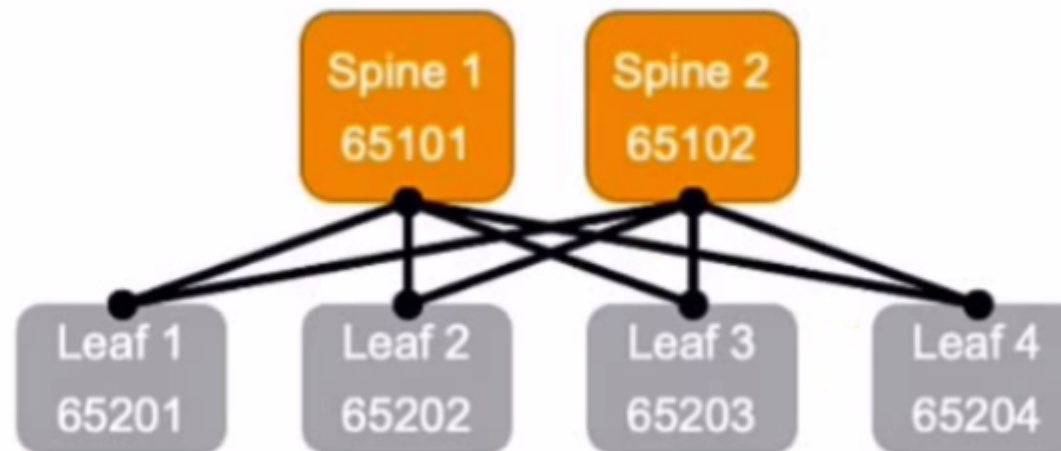
**Question Type:** MultipleChoice

---

Exhibit.

Spine Nodes  
QFX5110-32Q

Leaf Nodes  
QFX5100-48S



Given the information shown below.

2 spine nodes with (4) 40GbE interfaces each

4 leaf nodes. ~ Each leaf node has half-utilized (24) 10GbE interfaces,

-- Each leaf node has (1) 40GbE interface to each of the 2 spine nodes

What is the oversubscription ratio for the IP fabric shown in the exhibit?

**Options:**

---

A) 2:1

B) 1:1

C) 4:1

D) 3:1

**Answer:**

---

C

## Question 5

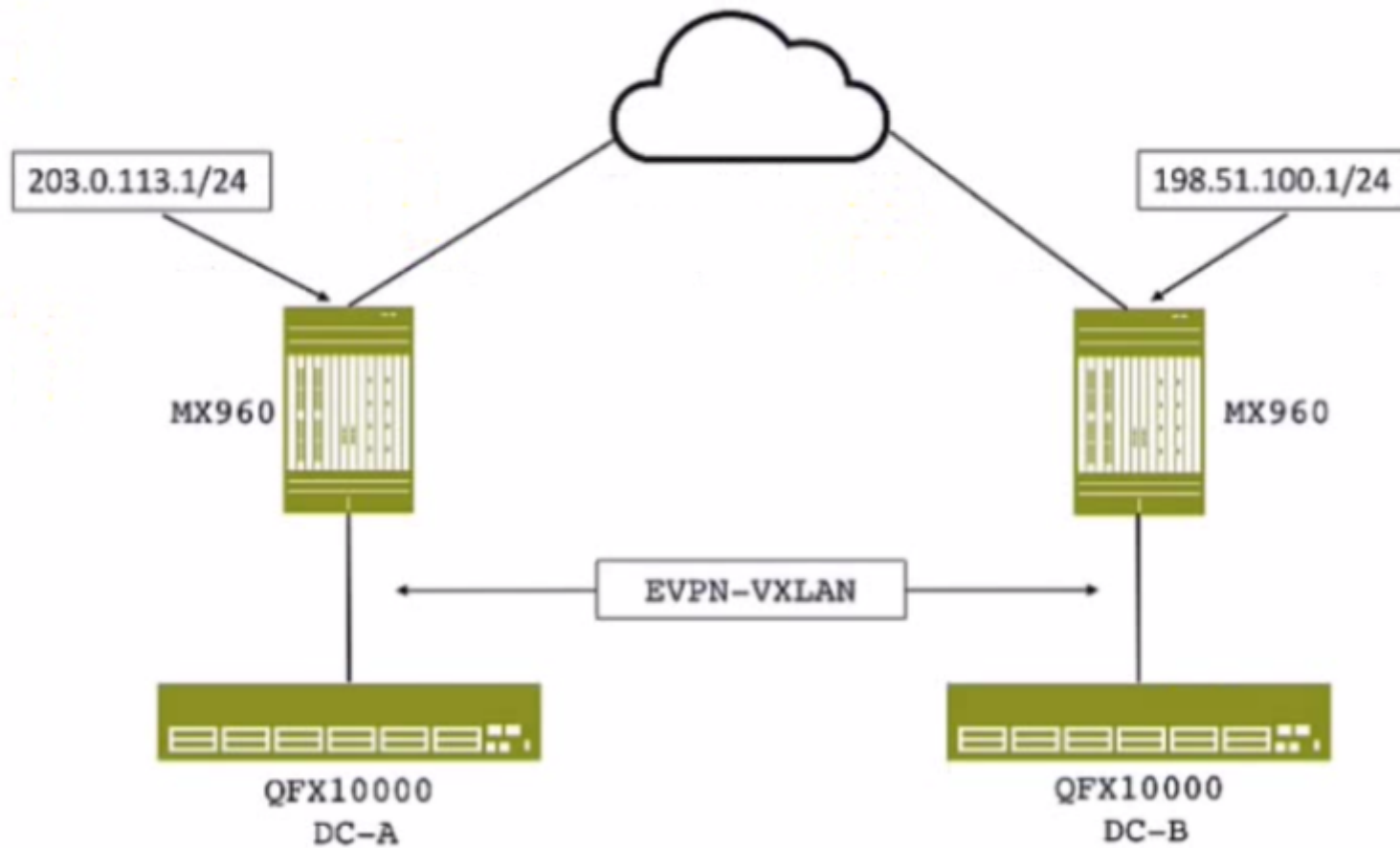
---

**Question Type:** MultipleChoice

---

Exhibit.





You are designing a Data Center Interconnect to transport VXLAN traffic between DC-A and DC-B

Which two technologies will allow the MX Series routers to transport the VXLAN packets over the WAN, as shown in the exhibit?  
(Choose two)

**Options:**

---

- A) VPLS
- B) Layer 2 VPN
- C) IP routing
- D) Layer 3 VPN

**Answer:**

---

A, D

## Question 6

---

**Question Type:** MultipleChoice

---

You must include high availability features when designing part of a data center. Every network device in this part of the data center only has one routing engine. Which high availability feature should you use in this scenario?

**Options:**

---

- A) GRES
- B) NSB
- C) graceful restart
- D) NSR

**Answer:**

---

B

**To Get Premium Files for JN0-1302 Visit**

<https://www.p2pexams.com/products/jn0-1302>

**For More Free Questions Visit**

<https://www.p2pexams.com/juniper/pdf/jn0-1302>

