



**Free Questions for *AZ-800* by *certsinside***

**Shared by *Meadows* on *29-01-2024***

**For More Free Questions and Preparation Resources**

***Check the Links on Last Page***

## Question 1

---

### Question Type: Hotspot

---

You have a server named Server1 that runs Windows Server and has the Hyper-V server role installed. Server1 contains a virtual machine named VM1 that runs Windows Server.

You need to install the Hyper-V server role on VM1.

Which PowerShell command should you run first? To answer, select the appropriate options in the answer area.

NOTE: Each correct selection is worth one point.

### Answer Area

Answer:

Set-VMHost Server1	-EnableEnhancedSessionMode
Set-VM VM1	<b>-EnableEnhancedSessionMode</b>
Set-VMFirmware VM1	-EnableHostResourceProtection
<b>Set-VMHost Server1</b>	-ExposeVirtualizationExtensions
Set-VMProcessor VM1	-CompatibilityForOlderOperatingSystemsEnabled
Set-VMSecurity VM1	

## Question 2

---

### Question Type: MultipleChoice

---

You have an Azure subscription that contains the virtual networks shown in the following table.

Name	Subnet	Location
VNet1	Subnet11, Subnet12	West US
VNet2	Subnet21	West US
VNet3	Subnet31	Central US

You deploy a virtual machine named VM1 that runs Windows Server. VM1 is connected to Subnet11.

You plan to add an additional network interface named NIC1 to VM1.

To which subnets can NIC1 be attached?

### Options:

---

- A- Subnet11 only
- B- Subnet12 only
- C- Subnet11 and Subnet12only
- D- Subnet12 and Subnet21 only
- E- Subnet11, Subnet12, Subnet21f and Subnet31

### Answer:

---

B

## Question 3

Question Type: Hotspot

Your network contains an Active Directory Domain Services (AD DS) domain named contoso.com. The domain contains the users shown in the following table.

Name	Located in
------	------------

'Os) shown in the following table.

Name	Linked to	Enforcement
GPO1	Drive H maps to \\server1\share.	enforced for OU1.
GPO2	Drive H maps to \\server2\share.	enforced for OU2.

Select No.

Answer Area

Statements	Yes	No
For User1, \\server2\share maps to drive H.	<input type="radio"/>	<input type="radio"/>
For User2 \\server1\share maps to drive H.	<input type="radio"/>	<input type="radio"/>
For User3, \\server3\share maps to drive H.	<input type="radio"/>	<input type="radio"/>

## Question 4

Question Type: MultipleChoice

You have an on-premises Active Directory Domain Services (AD DS) domain that syncs with a Microsoft Entra tenant.

You deploy an app that adds custom attributes to the domain.

From Azure Cloud Shell, you discover that you cannot query the custom attributes of users.

You need to ensure that the custom attributes are available in Microsoft Entra ID.

Which task should you perform from Microsoft Entra Connect first?

**Options:**

---

- A- Refresh directory schema
- B- Configure device options
- C- Customize synchronization options
- D- Manage federation

**Answer:**

---

C

## Question 5

---

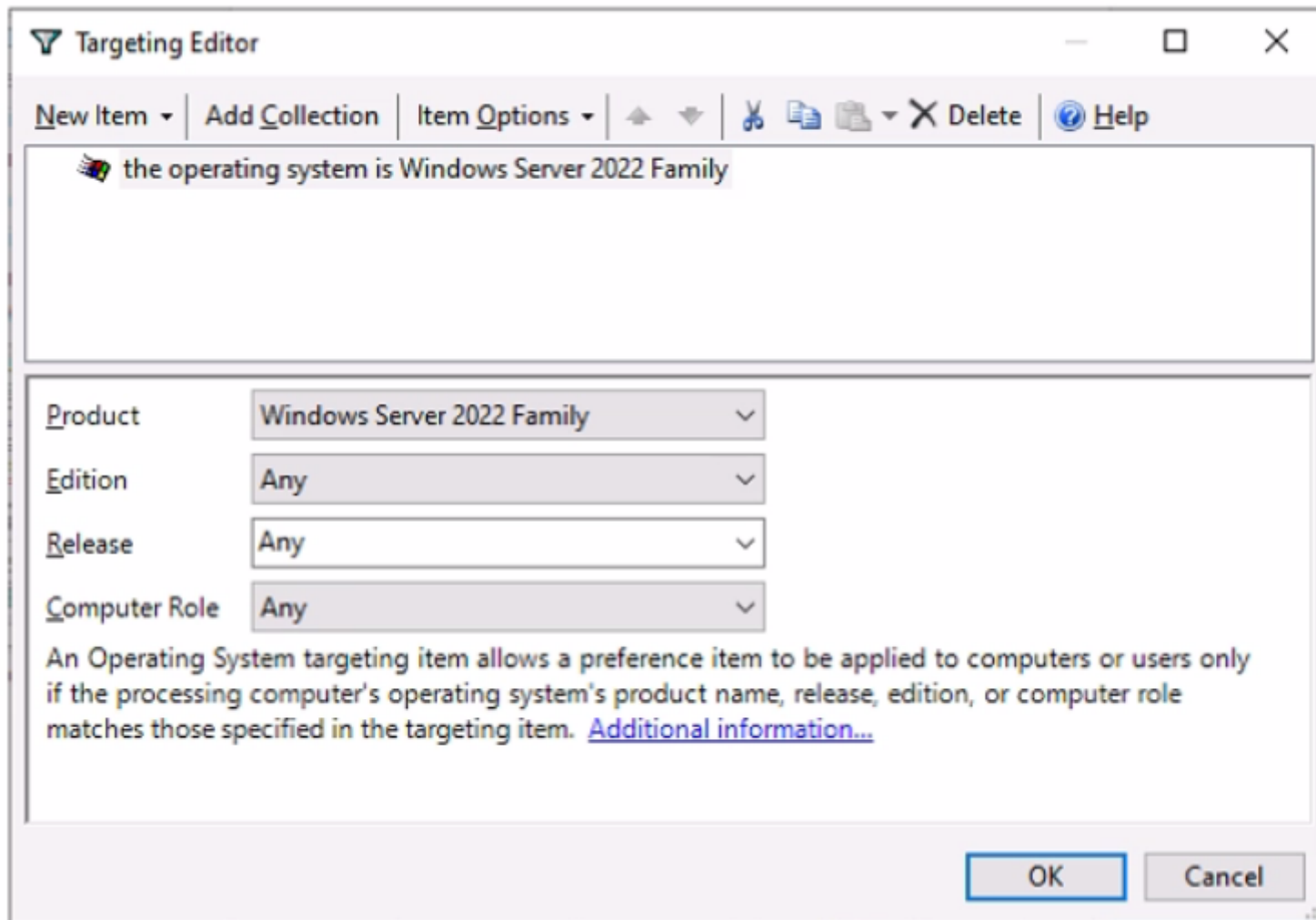
**Question Type: MultipleChoice**

---

Your network contains an Active Directory domain named contoso.com. The domain contains the computers shown in the following table.

Name	Operating system
Computer1	Windows 11
Server1	Windows Server 2016
Server2	Windows Server 2019
Server3	Windows Server 2022

On Server3, you create a Group Policy Object (GPO) named GP01 and link GPOI to contoso.com. GP01 includes a shortcut preference named Shortcut1 that has item-level targeting configured as shown in the following exhibit.



To which computer will Shortcut1 be applied?

**Options:**

---

A- Server3 only

B- Computer1 and Server3 only

C- Server2 and Server3 only

D- Server1, Server2, and Server3 only

**Answer:**

---

A

## Question 6

---

**Question Type: MultipleChoice**

---

You have an Active Directory Domain Services (AD DS) domain that contains the domain controllers shown in the following table.



Name	Operations master role
DC1	Schema master
DC2	Infrastructure master
DC3	Domain naming master
DC4	PDC emulator, RID master

The domain contains an app named App1 that uses a custom application partition to store configuration data.

You decommission App1.

When you attempt to remove the custom application partition, the process fails.

Which domain controller is unavailable?

**Options:**

---

A- DC1

B- DC2

C- DC3

D- DC4

**Answer:**

---

C

## Question 7

---

### Question Type: Hotspot

---

Your on-premises network contains an Active Directory Domain Services (AD DS) domain.

You plan to sync the domain with a Microsoft Entra tenant by using Microsoft Entra Connect cloud sync.

You need to meet the following requirements:

- \* Install the software required to sync the domain and Microsoft Entra ID.
- \* Enable password hash synchronization.

What should you install, and what should you use to enable password hash synchronization? To answer, select the appropriate options in the answer area.

## Answer Area

Answer:

Install:

Microsoft Entra Connect
Active Directory Administrative Center
Microsoft Entra Connect
The AD FS Management console
The Microsoft Entra Connect provisioning agent

## Question 8

Question Type: MultipleChoice

You have an Azure subscription. The subscription contains a virtual machine named VM1 that runs Windows Server. You plan to manage VM1 by using a PowerShell runbook.

You need to create the runbook. What should you create first?

Use:

The Azure portal
Active Directory Administrative Center
Microsoft Entra Connect
The AD FS Management console
The Azure portal

### Options:

- A- an Azure workbook
- B- a Microsoft Power Automate flow
- C- a Log Analytics workspace
- D- an Azure Automation account

**Answer:**

---

D

## Question 9

---

**Question Type: Hotspot**

---

You have an Azure subscription and a computer named Computed that runs Windows 11.

From the Azure portal, you deploy a virtual machine named VM1 that runs Windows Server. You configure VM1 to use the default settings.

You need to ensure that you can connect to VM1 by using PowerShell remoting.

Which cmdlet should you run, and what should you use to run the cmdlet? To answer, select the appropriate options in the answer area.

NOTE: Each correct selection is worth one point.

## Answer Area

Answer:

---

Run from:  ▼  
A PowerShell session on Computer1  
A PowerShell session on VM1  
Azure Cloud Shell

Cmdlet:  ▼  
Enable-AzVMPSRemoting  
Enable-PSRemoting -Force  
Enable-PSSessionConfiguration

**To Get Premium Files for AZ-800 Visit**

**<https://www.p2pexams.com/products/az-800>**

**For More Free Questions Visit**

**<https://www.p2pexams.com/microsoft/pdf/az-800>**

