



Free Questions for MS-102

Shared by Mccray on 29-01-2024

For More Free Questions and Preparation Resources

[Check the Links on Last Page](#)



# Question 1

Question Type: Hotspot

Case Study: Mix Questions

## Mix Questions

### MS-102 Mix Questions IN THIS CASE STUDY

You have a Microsoft 365 E5 subscription that contains the users shown in the following table.

Name	Member of	Passwordless capable	Multi-factor authentication (MFA) method registered
User1	Group1	Capable	Microsoft Authenticator app (push notification)
User2	Group2	Capable	Microsoft Authenticator app (push notification)
User3	Group1, Group2	Capable	Mobile phone, Windows Hello for Business

Each user has a device with the Microsoft Authenticator app installed.

From Microsoft Authenticator settings for the subscription, the Enable and Target settings are configured as shown in the exhibit. (Click the Exhibit tab.)

### Microsoft Authenticator settings ×

**i** Number Matching will begin to be enabled for all users of the Microsoft Authenticator app starting 27th of February 2023. [Learn more](#)

The Microsoft Authenticator app is a flagship authentication method, usable in passwordless or simple push notification approval modes. The app is free to download and use on Android/iOS mobile devices. [Learn more](#).

**Enable and Target** Configure

Enable

**Include** Exclude

Target  All users  Select groups

[Add groups](#)

Name	Type	Registration	Authentication mode
Group1	Group	Optional	Passwordless

For each of the following statements, select Yes if the statement is true. Otherwise, select No.

NOTE: Each correct selection is worth one point.

**Answer Area**

Statements	Yes	No
User1 can use number matching during sign-in.	<input type="radio"/>	<input type="radio"/>
User2 can use number matching during sign-in.	<input type="radio"/>	<input type="radio"/>
User3 can use number matching during sign-in.	<input type="radio"/>	<input type="radio"/>

Answer:

See the Answer in the Premium Version!

## Question 2

Question Type: MultipleChoice

Case Study: Mix Questions

### Mix Questions

#### MS-102 Mix Questions IN THIS CASE STUDY

You have a Microsoft 365 tenant.

You plan to manage incidents in the tenant by using the Microsoft Defender XDR. Which Microsoft service source will appear on the Incidents page of the Microsoft Defender portal?

Options:

- A- Microsoft Defender for Cloud Apps
- B- Microsoft Defender for Cloud
- C- Azure Arc
- D- Azure Information Protection

Answer:

D

## Question 3

Question Type: MultipleChoice

Case Study: Mix Questions

---

## Mix Questions

### MS-102 Mix Questions IN THIS CASE STUDY

Your company has a Microsoft Entra tenant named contoso.com and a Microsoft 365 subscription. All users use Windows 10 devices to access Microsoft 365 apps. All the devices are in a workgroup.

You plan to implement passwordless sign-in to contoso.com.

You need to recommend changes to the infrastructure for the planned implementation. What should you include in the recommendation?

#### Options:

---

- A- Deploy the Microsoft Entra Connect provisioning agent.
- B- Join all the devices to contoso.com.
- C- Deploy Microsoft Entra Application Proxy.
- D- Deploy the Microsoft Authenticate app.

#### Answer:

---

D

## Question 4

---

Question Type: MultipleChoice

---

Case Study: Mix Questions

---

## Mix Questions

### MS-102 Mix Questions IN THIS CASE STUDY

You have a Microsoft 365 E5 subscription that uses Microsoft Defender for Office 365 and contains a user named User1.

User1 emails a product catalog in the PDF format to 300 vendors. Only 200 vendors receive the email message, and User1 is blocked from sending email until the next day.

You need to prevent this issue from reoccurring.

What should you configure?

Options:

---

- A- anti-spam policies
- B- Safe Attachments policies
- C- anti-phishing policies
- D- anti-malware policies

Answer:

---

A

## Question 5

---

Question Type: Hotspot

---

Case Study: Mix Questions

---

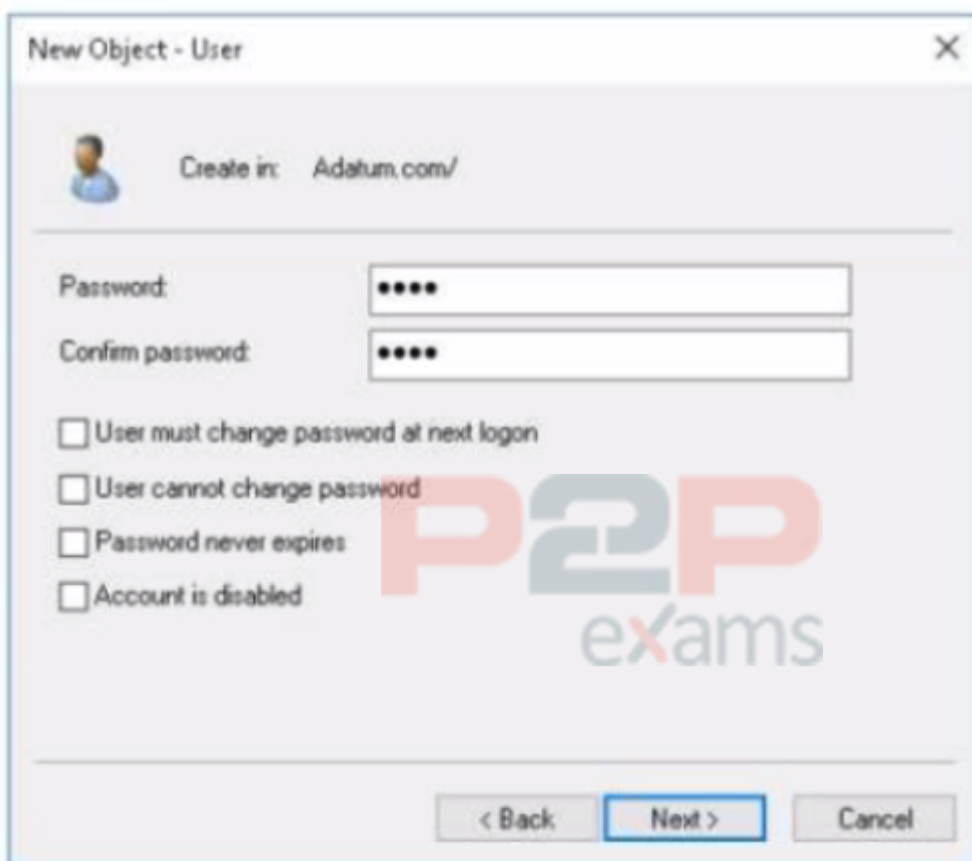
## Mix Questions

### MS-102 Mix Questions IN THIS CASE STUDY

Your network contains an on-premises Active Directory domain named adatum.com that syncs to Azure AD by using the Azure AD Connect Express Settings. Password write back is disabled.

You create a user named User1 and enter Pass in the Password field as shown in the following exhibit.





The Azure AD password policy is configured as shown in the following exhibit.

Password policy

Set the password policy for all users in your organization.

Days before passwords expire 90

Days before a user is notified about 14

expiration

You confirm that User1 is synced to Azure AD.

For each of the following statements, select Yes if the statement is true. Otherwise, select No.

NOTE: Each correct selection is worth one point.

**Answer Area**

Statements	Yes	No
User1 can sign in to Azure AD.	<input type="radio"/>	<input type="radio"/>
User1 can change the password immediately by using the My Apps portal.	<input type="radio"/>	<input type="radio"/>
From Azure AD, User1 must change the password every 90 days.	<input type="radio"/>	<input type="radio"/>

Answer:

See the Answer in the Premium Version!

## Question 6

Question Type: DragDrop

Case Study: Mix Questions

### Mix Questions

#### MS-102 Mix Questions IN THIS CASE STUDY

You have a Microsoft 365 E5 subscription that contains the devices shown in the following table.

Type	Number of devices	Operating system	Enrollment status
Corporate	150	Windows 11	Azure AD-joined, Microsoft Intune-managed
Bring your own device (BYOD)	25	Windows 11	Unmanaged

You need to onboard the devices to Microsoft Defender for Endpoint. The solution must minimize administrative effort.

What should you use to onboard each type of device? To answer, drag the appropriate onboarding methods to the correct device types. Each onboarding method may be used once, more than once, or not at all. You may need to drag the split bar between panes or scroll to view content.

NOTE: Each correct selection is worth one point.

**Onboarding method**

- 
- 
- 
- 
-

**Device Type**

Corporate:

BYOD:

Answer:

See the Answer in the Premium Version!

## Question 7

---

Question Type: MultipleChoice

---

Case Study: Mix Questions

---

### Mix Questions

#### MS-102 Mix Questions IN THIS CASE STUDY

You have a Microsoft 365 E5 subscription.

On Monday, you create a new user named User1.

On Tuesday, User1 signs in for the first time and perform the following actions:

- \* Signs in to Microsoft Exchange Online from an anonymous IP address
- \* Signs in to Microsoft SharePoint Online from a device in New York City.
- \* Establishes Remote Desktop connections to hosts in Berlin and Hong Kong, and then signs in to SharePoint Online from the Remote Desktop connections

Which types of sign-in risks will Azure AD Identity Protection detect for User1?

#### Options:

---

- A- anonymous IP address only
- B- anonymous IP address and atypical travel
- C- anonymous IP address, atypical travel, and unfamiliar sign-in properties
- D- unfamiliar sign-in properties and atypical travel only
- E- anonymous IP address and unfamiliar sign-in properties only

#### Answer:

---

A

## Question 8

---

Question Type: MultipleChoice

---

Case Study: Mix Questions

---

### Mix Questions



## MS-102 Mix Questions IN THIS CASE STUDY

You have a Microsoft 365 subscription that contains the users shown in the following table.

Name	Microsoft 365 admin role	Microsoft Exchange Online admin role
User1	Global Administrator	None
User2	Exchange Administrator	None
User3	Service Support Administrator	None
User4	None	Organization Management

You plan to use Exchange Online to manage email for a DNS domain.

An administrator adds the DNS domain to the subscription.

The DNS domain has a status of Incomplete setup.

You need to identify which user can complete the setup of the DNS domain. The solution must use the principle of least privilege.

Which user should you identify?

Options:

- A- User1
- B- User2
- C- User3
- D- User4

Answer:

A

## Question 9

Question Type: Hotspot

Case Study: Mix Questions

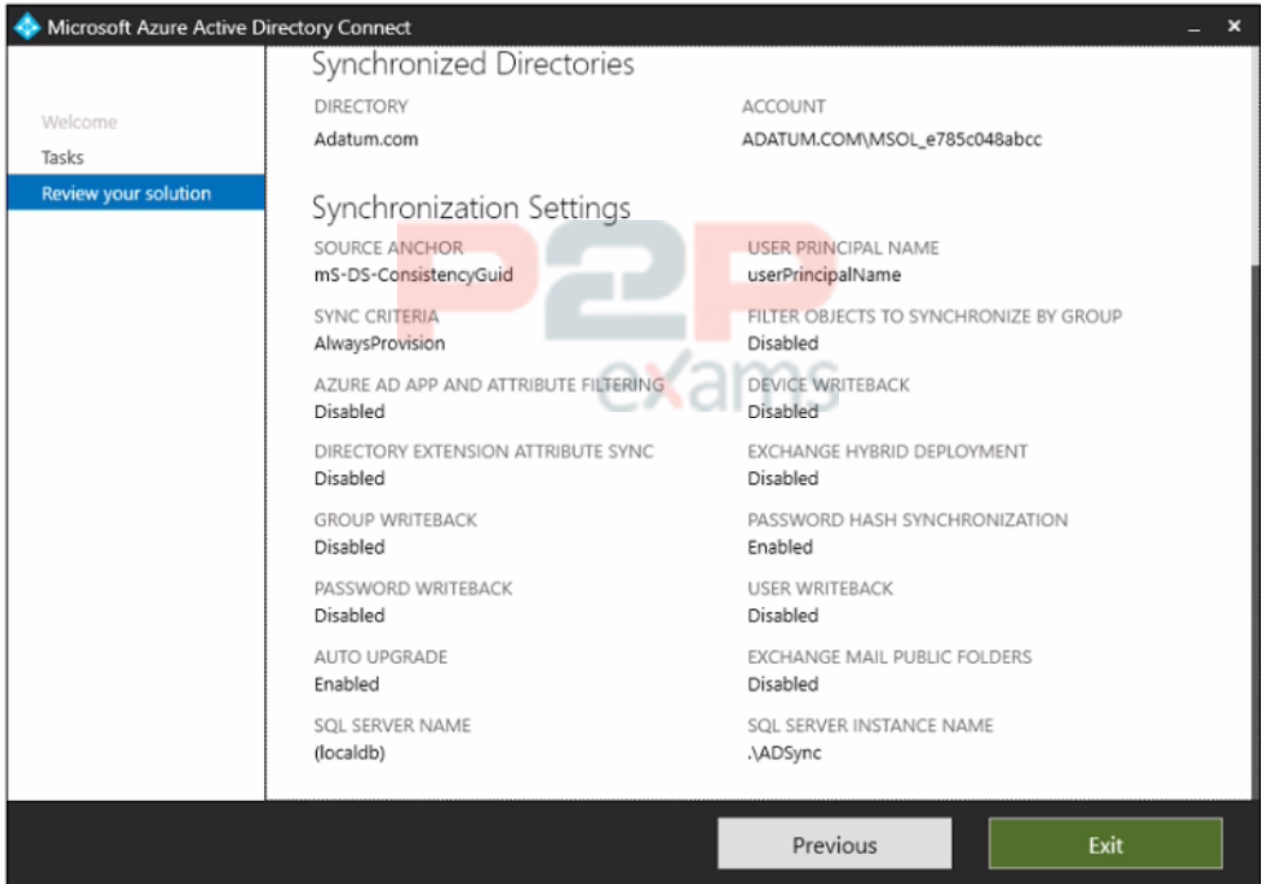
## Mix Questions

MS-102 Mix Questions IN THIS CASE STUDY

Your company has a hybrid deployment of Microsoft 365.

An on-premises user named User1 is synced to Azure AD.

Azure AD Connect is configured as shown in the following exhibit



Use the drop-down menus to select the answer choice that completes each statement based on the information presented in the graphic.

NOTE: Each correct selection is worth one point.

Answer Area

User1 [answer choice].

- cannot change her password from any Microsoft portals
- cannot change her password from any Microsoft portals
- can change her password by using self-service password reset feature only
- can change her password from the Microsoft 365 admin center only

If the password for User1 is changed in Active Directory, [answer choice].

- the password hash will be synchronized to Azure AD
- the password hash will be synchronized to Azure AD
- a new randomly generated password will be assigned to User1
- the password hash in Azure AD will be unchanged

Answer:

See the Answer in the Premium Version!

To Get Premium Files for MS-102 Visit

<https://www.p2pexams.com/products/ms-102>

For More Free Questions Visit

<https://www.p2pexams.com/microsoft/pdf/ms-102>

**20%**  
**DISCOUNT**

**P2P**  
exams