



Free Questions for PL-900

Shared by Freeman on 24-05-2024

For More Free Questions and Preparation Resources

[Check the Links on Last Page](#)



Question 1

Question Type: DragDrop

You create a Power Pages site to share Microsoft Dataverse data with external customers. Customers must be authenticated to view data.

a. You need to configure Power Pages.

Which component should you use for each requirement? To answer, drag the appropriate components to the correct requirements. Each component may be used once, more than once, or not at all. You may need to drag the split bar between panes or scroll to view content.

NOTE: Each correct selection is worth one point.

Requirement	Component
Collect data from customers and store the data in a table.	<input type="text"/>
Display multiple rows from a table.	<input type="text"/>

Answer:

See the Answer in the Premium Version!

Question 2

Question Type: MultipleChoice

You create a Power Apps app and Power Automate flow.

You need to combine multiple types of field values into a single string value and format the string.

What should you use?

Options:

- A- switch
- B- environment variable
- C- expression
- D- condition

Answer:

C

Question 3

Question Type: MultipleChoice

A company creates canvas apps for its sales team.

A user creates a canvas app from a data source.

You need to determine the screens created.

Which three screens should you identify? Each correct answer presents part of the solution.

NOTE: Each correct selection is worth one point.

Options:

A- welcome

B- edit/create

C- browse

D- details

E- delete

Answer:

B, C, D

Question 4

Question Type: MultipleChoice

A company is considering using Power Pages for its website.

You need to identify the capabilities of Power Pages.

What are two capabilities of Power Pages? Each correct answer presents a complete solution.

NOTE: Each correct selection is worth one point.

Options:

- A- Supporting multiple language
- B- Creating customized styling for each user
- C- Providing low-code websites hosted as a service
- D- Supplying OData feeds

Answer:

A, C

Question 5

Question Type: MultipleChoice

Your company uses a SharePoint list to track customer order information, including manufacturing status.

Employees find the list difficult to read and update when using their mobile devices. You have a requirement to improve the usability of interacting with order data while on mobile devices.

You need to determine which Microsoft Power Platform capability will meet the requirements.

Which capability should you choose?

Options:

- A- Canvas app
- B- Power Automate cloud flow
- C- Power BI report

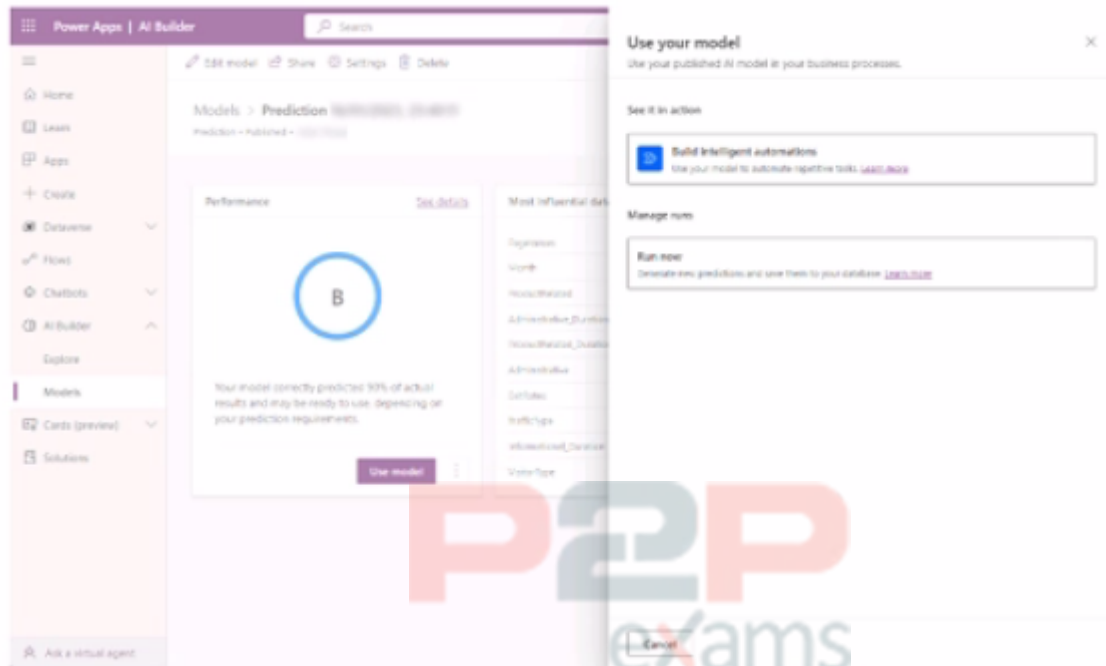
Answer:

A

Question 6

Question Type: Hotspot

You build an AI Builder prediction model that has the following details:



Use the drop-down menus to select the answer choice that answers each question baser! on the information presented in the graphs.

NOTE: Each correct selection is worth one point.

Answer Area

Questions	Answer choice
Where can you use the model?	<ul style="list-style-type: none"> Model-driven app Canvas app Model-driven app Power Automate cloud flow
What is the status of the model?	<ul style="list-style-type: none"> Trained Draft Trained Published
How is the model performing?	<ul style="list-style-type: none"> The model is worse than a random guess. The model is worse than a random guess. The model is slightly better than a random guess. The model is mostly correct.

Answer:

See the Answer in the Premium Version!

Question 7

Question Type: MultipleChoice

A company uses a custom-built system to record financial data that runs on a manager's machine.

The system does not have an API. New customer details must be manually entered into the system by the manager from a central spreadsheet. The user interface of the system contains the complex business logic that is needed for the manual customer data entry process.

You need to ensure that new customer details can be entered into the system automatically by using Power Automate.

Which type of flow should you create?

Options:

- A- business process
- B- desktop
- C- automated cloud
- D- instant cloud



Answer:

B

Question 8

Question Type: MultipleChoice

A company uses a model-driven app to record customers' dietary preferences.

You need to change the order of the columns in a personal view that you created on the Contact table.

Where should you change the order?

Options:

- A- Model-driven app
- B- Microsoft Power Platform admin center
- C- App designer
- D- Power Apps Studio



Answer:

A

Question 9

Question Type: MultipleChoice

A company requires a Power Pages site that uses one of the site design templates provided with Power Pages to build its website on.

You need to deploy the site.

Which three pages will be included in the site? Each correct answer presents part of the solution.

NOTE: Each correct selection is worth one point.

Options:

- A- Summary
- B- Search results
- C- Home page
- D- Forums
- E- Contact us



Answer:

B, C, E

Question 10

Question Type: MultipleChoice

A company is implementing Microsoft Power Platform. The company currently stores data in a SQL Server database. You need to explain the key benefits of Dataverse compared to SQL Server. Which three benefits should you explain? Each correct answer presents part of the solution. NOTE Each correct selection is worth one point.

Options:

- A- Dataverse can be hosted on different cloud providers to improve resiliency.
- B- Dataverse has multiple extensibility options within Microsoft Azure.
- C- Data schema changes can be made without any knowledge of code.
- D- Administrators can manage all aspects of the underlying platform.
- E- Existing Dynamics 365 customer engagement apps integrate natively with Dataverse.



Answer:

B, C, E

To Get Premium Files for PL-900 Visit

<https://www.p2pexams.com/products/pl-900>

For More Free Questions Visit

<https://www.p2pexams.com/microsoft/pdf/pl-900>

20%
DISCOUNT

P2P
exams