



Free Questions for 4A0-100 by certsinside

Shared by Oneil on 29-01-2024

For More Free Questions and Preparation Resources

Check the Links on Last Page

Question 1

Question Type: MultipleChoice

From a customer's perspective, how does a VPRN service operate?

Options:

- A- All sites are connected to a single wire.
- B- All sites are connected to a switched network.
- C- All sites are connected to a routed network.
- D- All sites are connected to the Internet.

Answer:

C

Question 2

Question Type: MultipleChoice

What type of VPN service does a VPRN provide?

Options:

- A- Layer 3 direct internet access service
- B- Layer 3 IP routed service
- C- Layer 2 point-to-point service
- D- Layer 2 multipoint service

Answer:

B

Question 3

Question Type: MultipleChoice

Which of the following is TRUE about a PE router within a service provider's MPLS network?

Options:

- A- It resides on the customer premises.
- B- It is not aware of the VPN services provided by the service provider.
- C- It should connect to at least one other PE router.
- D- It should connect to at least one CE device.

Answer:

D

Question 4

Question Type: MultipleChoice

Which of the following statements about router R1 is TRUE?



Options:

- A-** Router R1 is an iLER for both LSPs.
- B-** Router R1 is an eLER for both LSPs.
- C-** Router R1 is an iLER for LSP A and an eLER for LSP B.
- D-** Router R1 is an iLER for LSP B and an eLER for LSP A.

Answer:

C

Question 5

Question Type: MultipleChoice

Which of the following is TRUE regarding routers R2 and R3 in the pictured MPLS network?



Options:

- A- Router R2 pushes labels for LSP A, and R3 swaps labels for LSP A.
- B- Router R2 swaps labels for LSP A, and R3 pops labels for LSP A.

- C-** Router R2 and R3 swap labels for LSP A and LSP B.
- D-** Router R2 and R3 push labels for LSP A and LSP B, respectively.

Answer:

D

Question 6

Question Type: MultipleChoice

On what type of device/router is a Service Access Point (SAP) defined?

Options:

- A-** The SAP is defined on the CE device.
- B-** The SAP is defined on the PE device.
- C-** The SAP is defined on the P device.
- D-** The SAP is defined on both CE and PE devices.

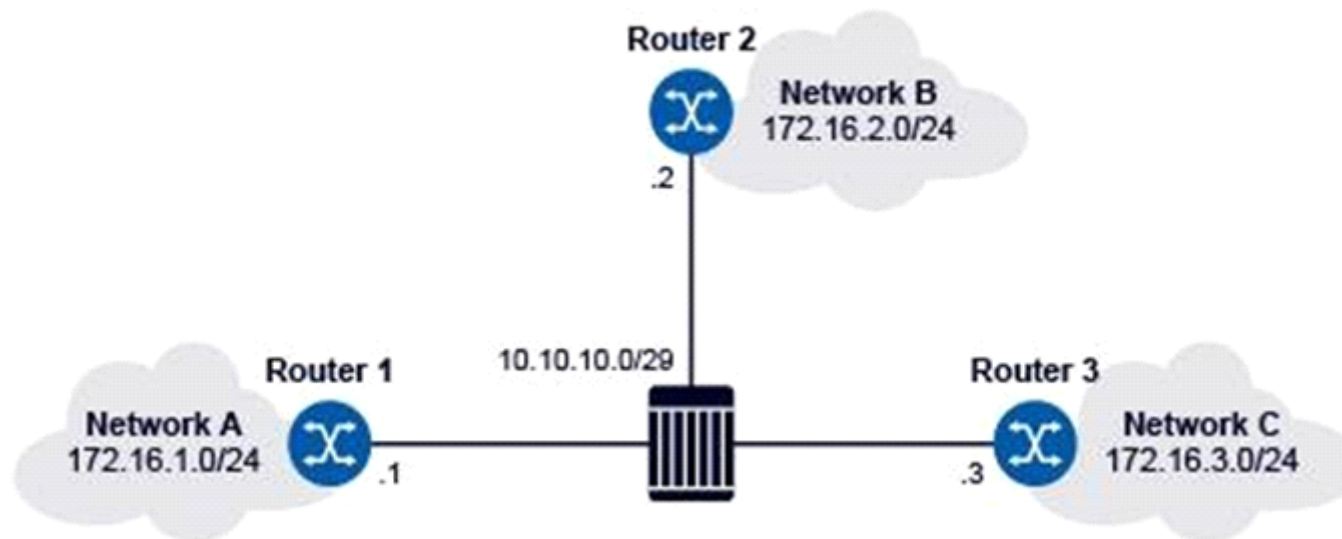
Answer:

B

Question 7

Question Type: MultipleChoice

What is the next-hop for network 172.16.1.0/24 installed in router 2's routing table?



Options:

A- 10.10.10.0

B- 10.10.10.1

C- 10.10.10.2

D- 10.10.10.3

Answer:

B

Question 8

Question Type: MultipleChoice

What type of BGP sessions does router R2 need to establish in order to reach networks 192.168.1.0/27 and 192.168.5.0/27?

Options:

A- eBGP peering sessions with routers R1, R3 and R4

B- iBGP peering sessions with routers R1 and R5

C- An eBGP peering session with router R1, and iBGP peering sessions with routers R3 and R4

D- An iBGP peering session with router R1, and an eBGP peering session with router R4

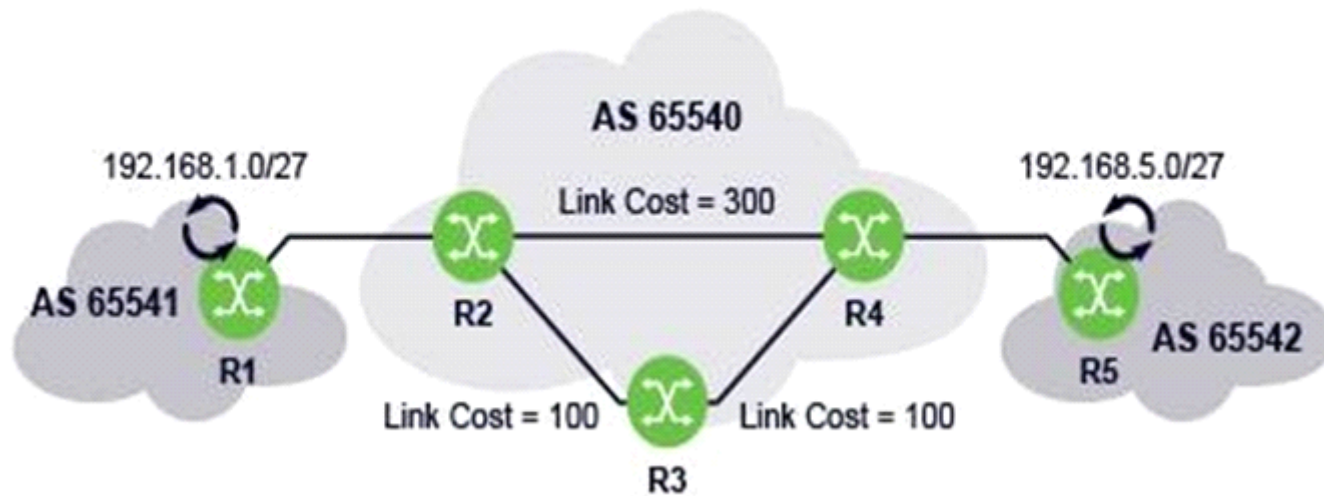
Answer:

C

Question 9

Question Type: MultipleChoice

Which of the following routing protocols SHOULD NOT be used between routers R1 and R2?



Options:

- A- Static Routing
- B- Default Routing
- C- OSPF
- D- BGP

Answer:

C

To Get Premium Files for 4A0-100 Visit

<https://www.p2pexams.com/products/4a0-100>

For More Free Questions Visit

<https://www.p2pexams.com/nokia/pdf/4a0-100>

