



Free Questions for 4A0-100 by vceexamstest

Shared by Tyson on 07-06-2022

For More Free Questions and Preparation Resources

Check the Links on Last Page

Question 1

Question Type: MultipleChoice

Which of the following statements are TRUE about the Alcatel-Lucent SR 7750? (Choose two.)

Options:

- A) It can boot without a compact flash in the CF3 slot.
- B) It cannot boot without a compact flash in the CF3 slot.
- C) It can operate without a compact flash in the CF3 slot once it has booted.
- D) It cannot operate without a compact flash in the CF3 slot once it has booted.

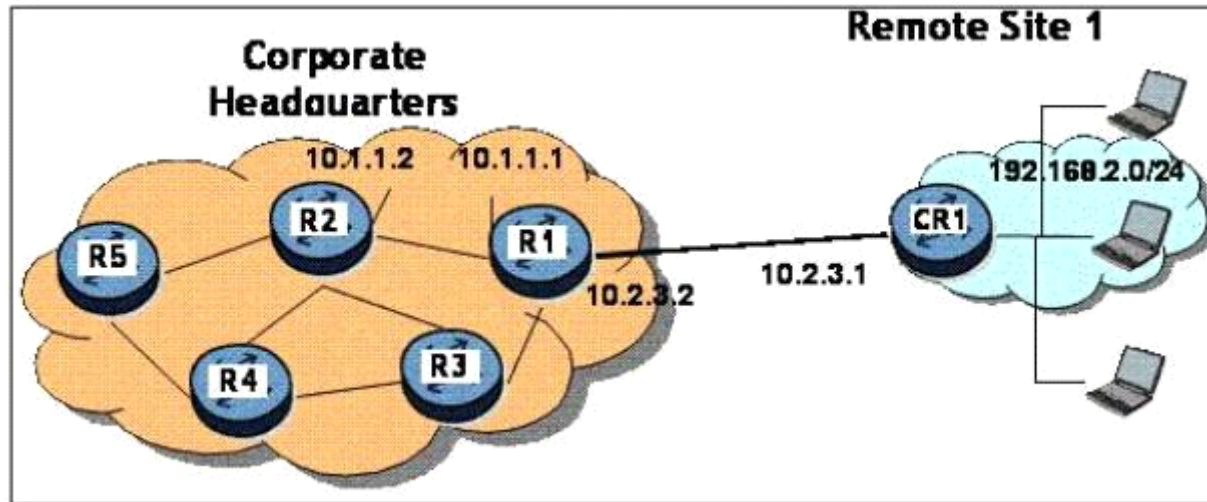
Answer:

B, C

Question 2

Question Type: MultipleChoice

Refer to the Exhibit:



Based on the network diagram (click the Exhibit Button), what are the prefix, mask, and next-hop used on CR1 to setup a default static route to R1?

Options:

- A) 0.0.0.0/0 next-hop 10.2 3.2
- B) 0.0.0.0/32 next-hop 10.2.3.2
- C) 10.2.3.2/32 next-hop 0.0.0.0/0
- D) 0.0.0.0/0 next-hop 192.168.2.0

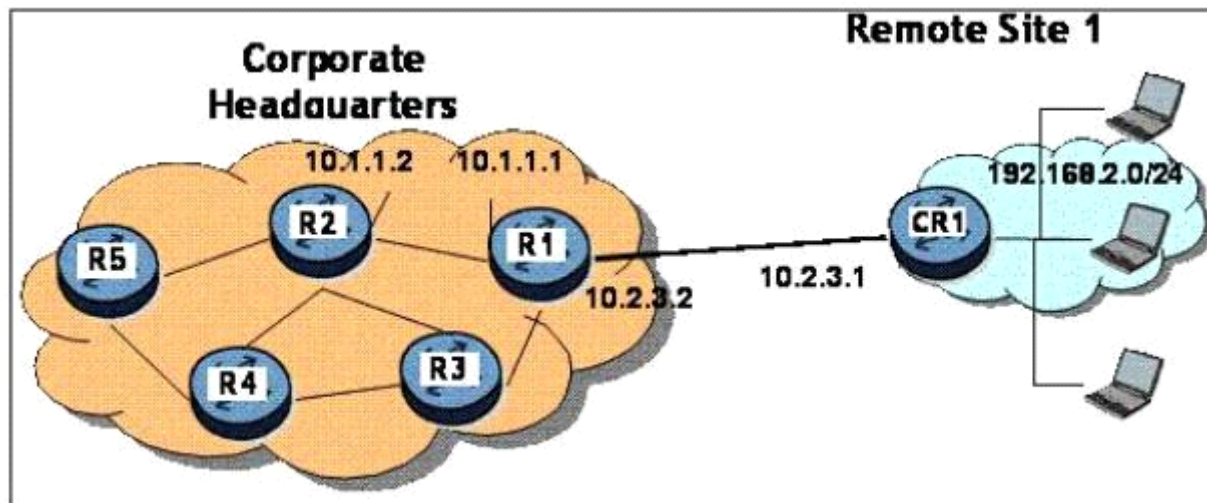
Answer:

A

Question 3

Question Type: MultipleChoice

Refer to the Exhibit:



Based on the network diagram (click the Exhibit Button), what is the next-hop used on R1 to setup a static route to the network on CR1?

Options:

- A) next-hop 10.2.3.2
- B) next-hop 192.168.2.1
- C) next-hop 10.2 3.1
- D) next-hop 192.168.2.0

Answer:

C

Question 4

Question Type: MultipleChoice

The statement below describes which of the following activities?

"A set of tasks that moves a packet from its entry into an IP network to its exit from the IP network."

Options:

- A) IP forwarding
- B) IP decapsulation
- C) IP encapsulation
- D) IP tunneling

Answer:

A

Question 5

Question Type: MultipleChoice

In regards to the Alcatel-Lucent 7750 SR-12 router, how many of the front access card slots are dedicated for Control Processors?

Options:

- A) 1
- B) 2
- C) 7

D) 10

Answer:

B

Question 6

Question Type: MultipleChoice

Which of the following are NOT examples of a VPN service offered on the Alcatel-Lucent 7750 SR? (Choose two.)

Options:

- A) VPWS Virtual Private Wire Service
- B) VPLS Virtual Private LAN Service.
- C) VPRN Virtual Private Routed Networks.
- D) MLPPP Multi-link Point-to-Point protocol
- E) VPDFS Virtual Private Dark Fiber Service.

Answer:

D, E

Question 7

Question Type: MultipleChoice

Which of the following describes an IP filter on the Alcatel-Lucent 7750 SR?

Options:

- A) An IP filter is used to examine an IP packet and its contents.
- B) An IP filter is applied to allow or deny IP packets into a network.
- C) Multiple ingress and egress filter policies can be applied to a network interface.
- D) Once an IP filter is applied it cannot be modified.

Answer:

B

To Get Premium Files for 4A0-100 Visit

<https://www.p2pexams.com/products/4a0-100>

For More Free Questions Visit

<https://www.p2pexams.com/nokia/pdf/4a0-100>

