



Free Questions for 4A0-100 by go4braindumps

Shared by Vargas on 15-04-2024

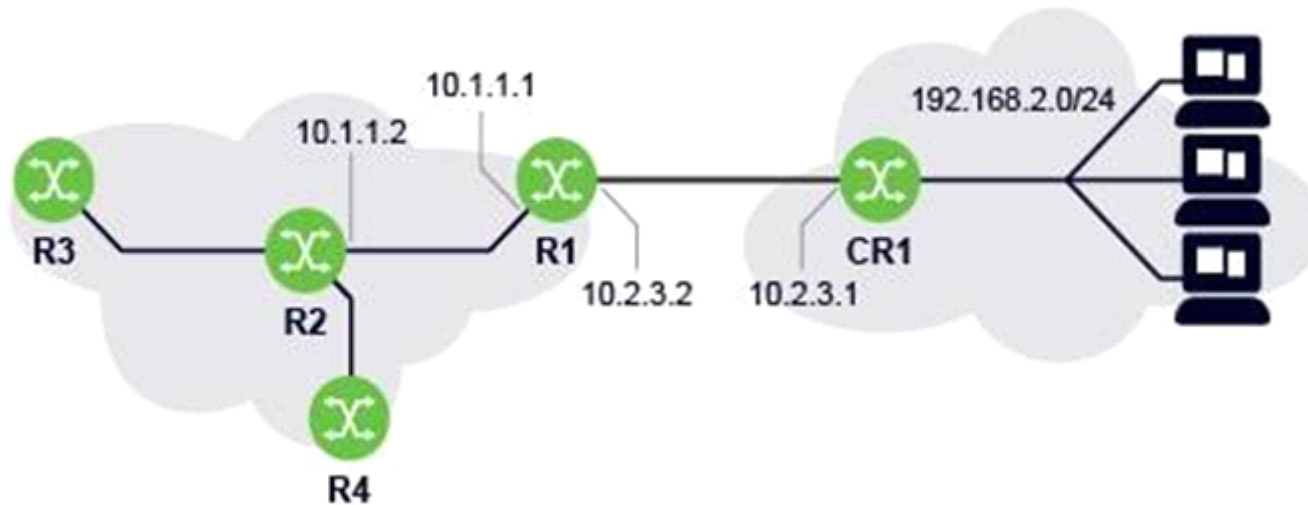
For More Free Questions and Preparation Resources

Check the Links on Last Page

Question 1

Question Type: MultipleChoice

What next-hop should be used on CR1 to configure a default route to router R1?



Options:

A- 10.2.3.2

B- 10.2.3.1

C- 192.168.2.0

D- 10.1.1.1

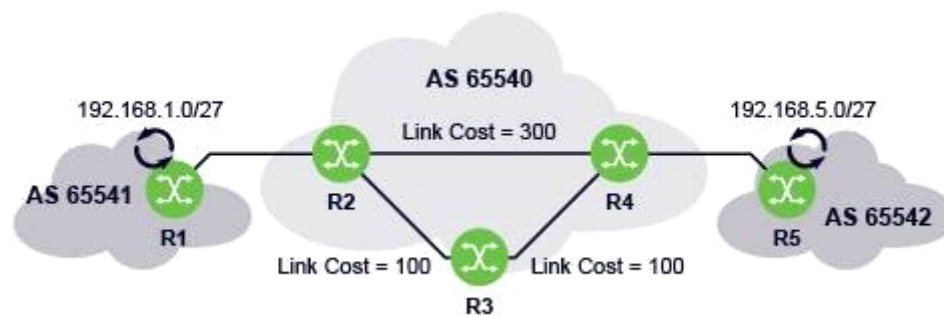
Answer:

A

Question 2

Question Type: MultipleChoice

Which of the following protocols can be used to force traffic from router R2 to use the direct link to router R4?



Options:

- A- Static routing
- B- IS-IS
- C- OSPF
- D- eBGP

Answer:

A

Question 3

Question Type: MultipleChoice

Which of the following statements about OSPF routing protocol is FALSE?

Options:

- A- It is a link state protocol.
- B- It supports hierarchy using multiple areas.
- C- It supports VLSM and address aggregation.

D- It uses hop-count for route selection.

Answer:

D

Question 4

Question Type: MultipleChoice

Which of the following describes an IP filter on the Nokia 7750 SR?

Options:

- A-** An IP filter is used to discard packets with checksum errors.
- B-** An IP filter can allow IP packets into a network or deny IP packets from entering a network.
- C-** Multiple ingress and egress filter policies can be applied to a network interface.
- D-** Once an IP filter is applied, it cannot be modified.

Answer:

B

Question 5

Question Type: MultipleChoice

Which of the following egress interfaces is used to forward a packet with destination IP address 140.10.0.110?

```
=====
Route Table (Router: Base)
=====
Dest Prefix[Flags]          Type   Proto   Age           Pref
  Next Hop[Interface Name]           Metric
-----
0.0.0.0/0                   Remote Static  01d18h59m     5
      140.10.0.106 [toC1]              1
140.10.0.0/32               Local  Local   01d18h59m     0
      system                            0
140.10.0.96/30              Local  Local   01d18h59m     0
      toP1                               0
140.10.0.100/30             Local  Local   01d18h59m     0
      toP2                               0
140.10.0.104/30             Local  Local   01d18h59m     0
      toC1                               0
140.10.0.108/30             Remote OSPF    00h39m02s    10
      140.10.0.98 [toP1]                200
140.10.0.112/30             Remote OSPF    01h14m34s    10
      140.10.0.102 [toP2]               200
-----
No. of Routes: 7
Flags: L = LFA nexthop available  B = BGP backup route available
      n = Number of times nexthop is repeated
=====
```

Options:

- A- System interface

B- Interface "toC1"

C- Interface "toP1"

D- Interface "toP2"

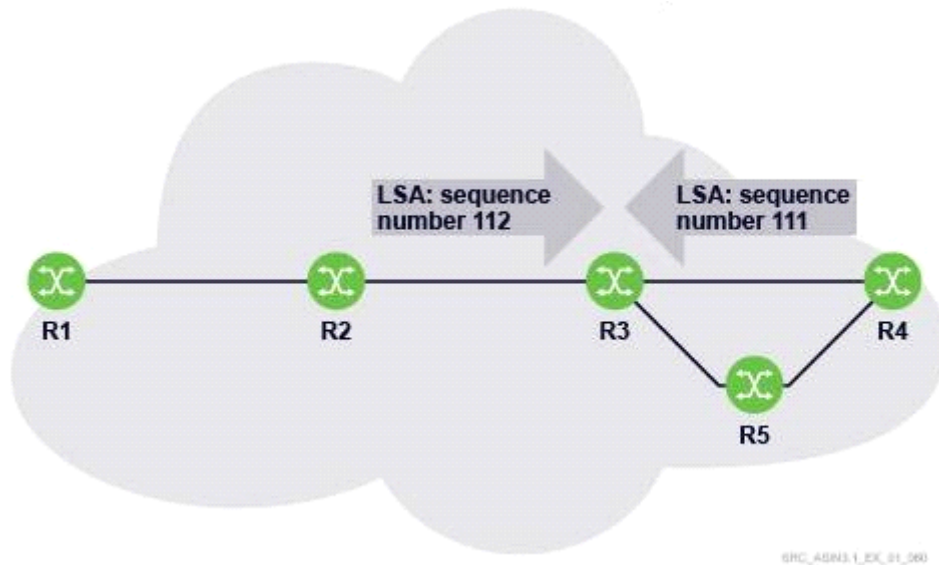
Answer:

C

Question 6

Question Type: MultipleChoice

Router R3 receives an LSA with the sequence number 111 from router R4 and then receives another copy of the LSA with a sequence number 112 from router R2. What does router R3 do with the LSA from R2?



Options:

- A- R3 discards the LSA received from R2 and sends a copy of the LSA from its link state base to R2.
- B- R3 installs the LSA received from R2 in its link state database and floods a copy to its neighbors.
- C- R3 discards the LSA received from R2 and sends an ACK to R2.
- D- R3 installs the LSA received from R2 in its link state database, sends an ACK to R2, and floods a copy to its neighbors.

Answer:

C

Question 7

Question Type: MultipleChoice

A network with address 208.40.224.0/24 is divided into /28 subnets. What is the host address range of the fourth subnetwork?

Options:

A- 208.40.224.17 -- 208.40.224.30

B- 208.40.224.33 -- 208.40.224.46

C- 208.40.224.49 -- 208.40.224.62

D- 208.40.224.65 -- 208.40.224.78

Answer:

C

Question 8

Question Type: MultipleChoice

Network 201.148.104.0/21 is subnetted using a /23 mask. How many subnets and host addresses per subnet will be obtained with this mask?

Options:

- A- 2 subnets, 1022 hosts
- B- 4 subnets, 510 hosts
- C- 2 subnets, 2048 hosts
- D- 4 subnets, 512 hosts

Answer:

A

Question 9

Question Type: MultipleChoice

What is the most specific aggregate prefix for the following 4 subnets?

100.1.1.4/30

100.1.1.8/30

100.1.1.12/30

100.1.1.16/30

Options:

A- 100.1.1.0/25

B- 100.1.1.0/26

C- 100.1.1.0/27

D- 100.1.1.0/28

Answer:

C

To Get Premium Files for 4A0-100 Visit

<https://www.p2pexams.com/products/4a0-100>

For More Free Questions Visit

<https://www.p2pexams.com/nokia/pdf/4a0-100>

