



Free Questions for 4A0-102 by go4braindumps

Shared by Roth on 15-04-2024

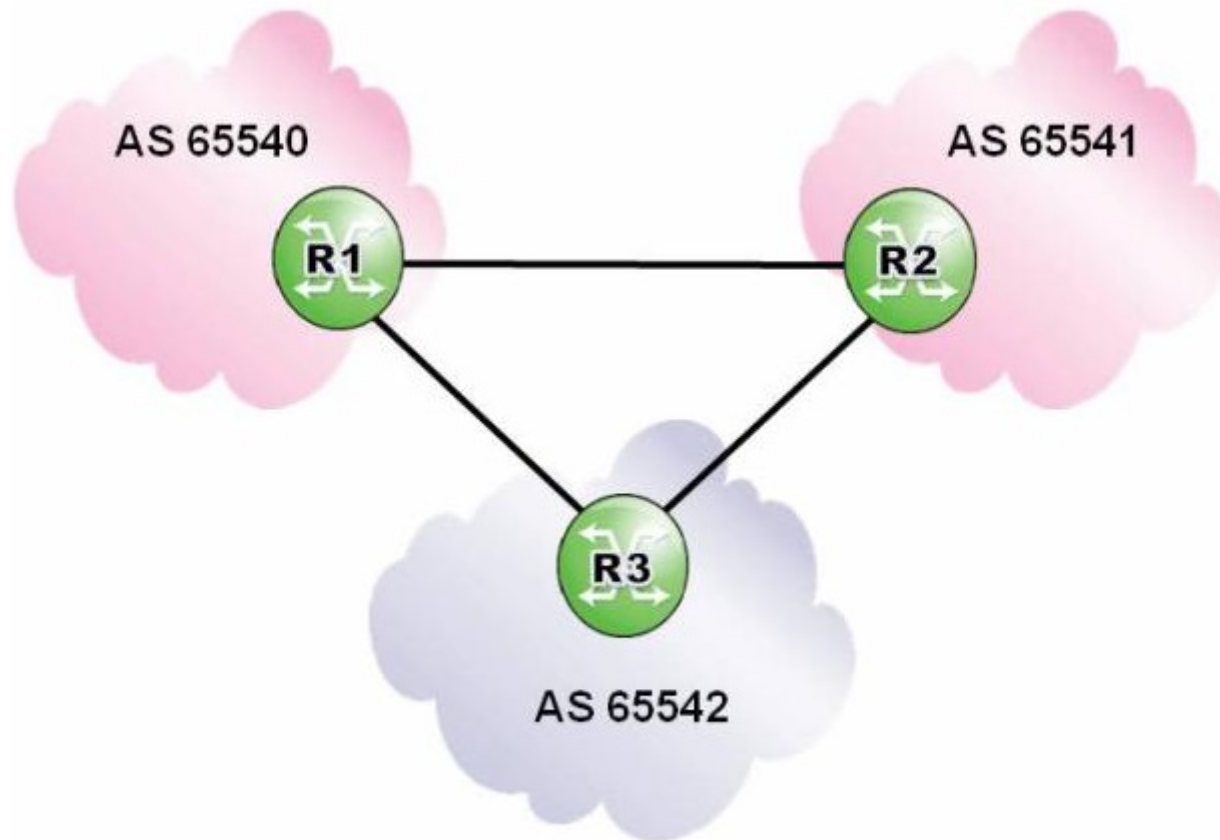
For More Free Questions and Preparation Resources

Check the Links on Last Page

Question 1

Question Type: MultipleChoice

Click the exhibit.



Router R3 is configured with an import policy to reject updates with an AS Path matching the regular expression ".+ 65540". Which of the following regarding updates originating in AS 65540 is TRUE?

Options:

- A- Router R3 rejects all updates originating in AS 65540.
- B- Router R3 accepts updates received from router R1 and rejects updates transited through router R2.
- C- Router R3 accepts updates transited through router R2 and rejects updates received from router R1.
- D- Router R3 accepts updates from both routers R1 and R2.

Answer:

B

Question 2

Question Type: MultipleChoice

An Alcatel-Lucent 7750 SR is configured with an export policy to redistribute its directly-connected networks into BGP. Which of the following databases contains the routes for these networks?

Options:

- A- The routes are in the RIB-In.
- B- The routes are in the Loc-RIB
- C- The routes are in the RIB-Out.
- D- The routes are not in any of the BGP databases.

Answer:

C

Question 3

Question Type: MultipleChoice

An Alcatel-Lucent 7750 SR has the BGP configuration shown below. Assuming the router has established BGP sessions to routers R1 and R2, which of the following is TRUE?

```
group "BGP Peers"  
  peer-as 65540  
  neighbor 10.16.10.1  
    description "R1"  
    peer-as 65550  
  exit  
  neighbor 10.16.10.2  
    shutdown  
    description "R2"  
    peer-as 65560  
  exit  
exit
```

Options:

- A- Both neighbors R1 and R2 should be part of AS 65540.
- B- Neighbor R1 should be part of AS 65550, while neighbor R2 should be part of AS 65540.
- C- Neighbor R1 should be part of AS 65550, while neighbor R2 should be part of AS 65560.
- D- Both neighbors R1 and R2 should be part of AS 65560.

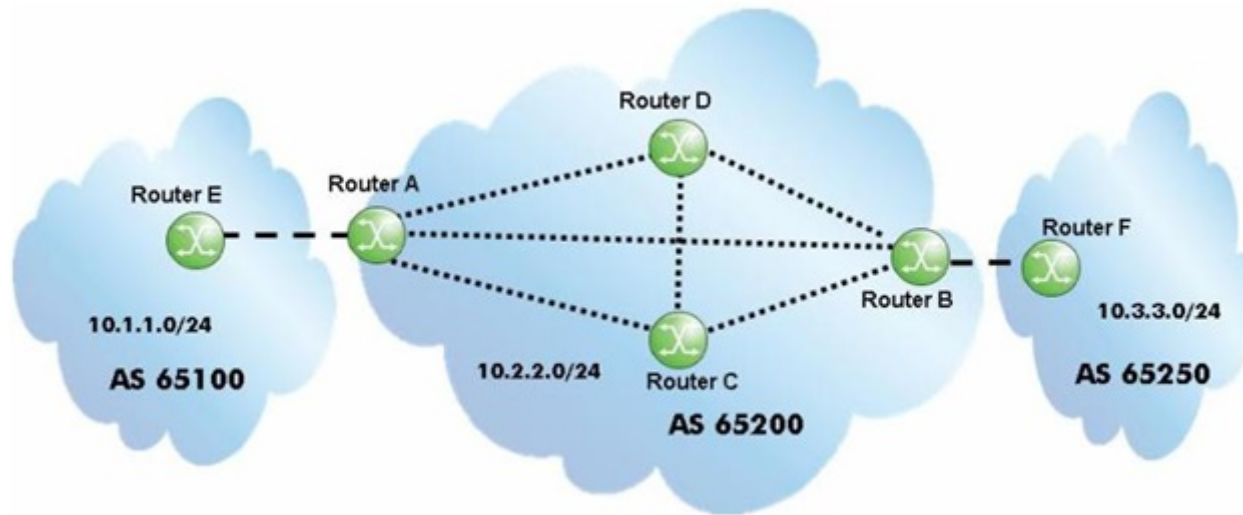
Answer:

C

Question 4

Question Type: MultipleChoice

Click the exhibit.



Over which BGP session will router B learn the 10.1.1.0/24 prefix?

Options:

- A- The session between router A and router B
- B- The session between router C and router B
- C- The session between router D and router B
- D- Router B will learn the prefix over all of the sessions, then it will choose the best route.

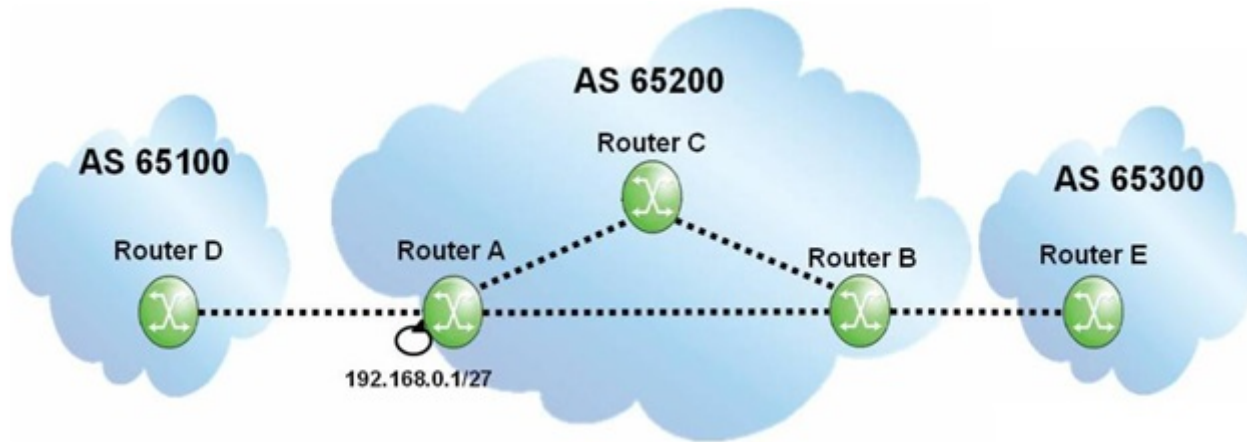
Answer:

A

Question 5

Question Type: MultipleChoice

Click the exhibit.



If router A originates a BGP route for prefix 192.168.0.1/27, what will the update contain when it reaches router B?

Options:

- A- AS Path of 65200, Next Hop of router A, Origin of IGP
- B- AS Path of 65200, Next Hop of router A, Origin of incomplete.
- C- Null AS Path, Next Hop of router A, Origin of IGP
- D- Null AS Path, Next Hop of router A, Origin of incomplete.

Answer:

C

Question 6

Question Type: MultipleChoice

What kind of attribute is the aggregator?

Options:

- A- Well-known mandatory
- B- Well-known discretionary
- C- Optional transitive
- D- Optional non-transitive

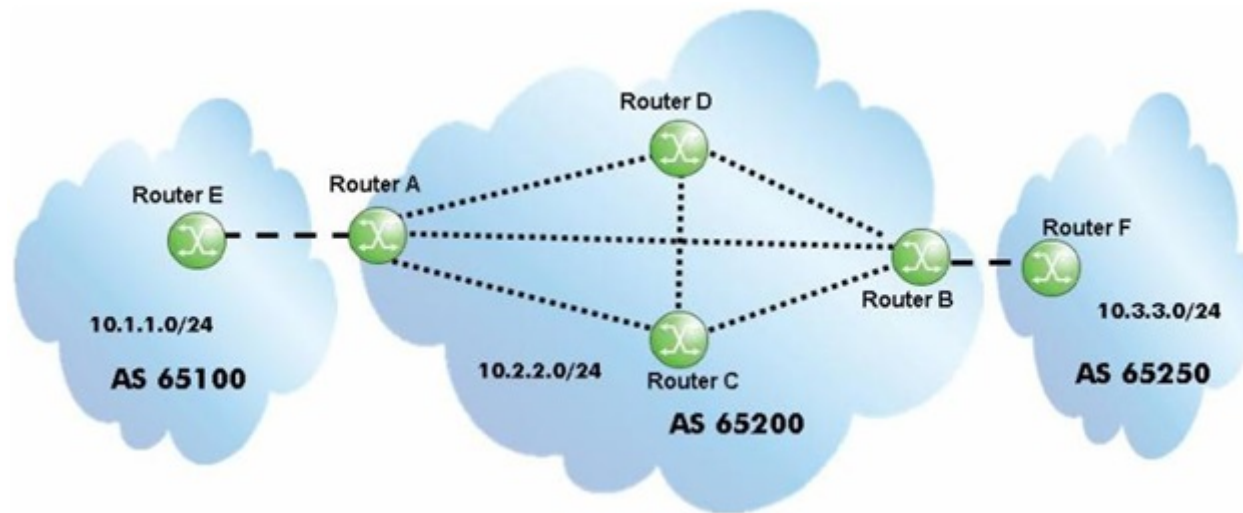
Answer:

C

Question 7

Question Type: MultipleChoice

Click the exhibit.



After router A receives the BGP update for the 10.3.3.0/24 prefix, which routers will the route be propagated to?

Options:

- A-** All routers with which it has a BGP session.
- B-** All routers with which it has a BGP session, except the router it received the update from, which is router B
- C-** All routers with which it has a BGP session, except the router it received the update from, which is router C
- D-** All routers with which it has a BGP session, except the router it received the update from, which is router D
- E-** Only eBGP neighbors.

Answer:

E

To Get Premium Files for 4A0-102 Visit

<https://www.p2pexams.com/products/4a0-102>

For More Free Questions Visit

<https://www.p2pexams.com/nokia/pdf/4a0-102>

