



Nokia 4A0-102 Mock Exam

Shared by Velazquez on 17-06-2026

For More Free Questions and Preparation Resources

[Check the Links on Last Page](#)



Question 1

Question Type: MultipleChoice

Which option best is TRUE if the state of one BGP neighbor shows Active?

Options:

- A- The neighbor will send a Keepalive message.
- B- The router is trying to initiate a TCP connection to that neighbor.
- C- The router received an Open message with the correct parameters.
- D- The router is actively exchanging updates with that neighbor.

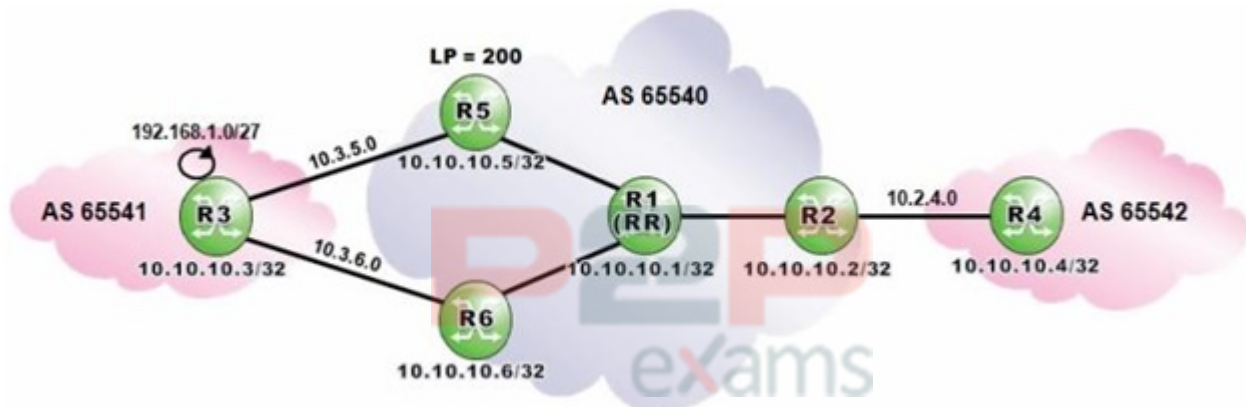
Answer:

B

Question 2

Question Type: MultipleChoice

Click the exhibit.



Router R1 is a route reflector with clients R2, R5 and R6. Prefixes advertised by router R5 have a local preference of 200. Router R3 advertises the prefix 192.168.1.0/27 to routers R5 and R6. Assuming that router R6 is configured with "advertise-external", what is the expected output of "show router bgp routes" when executed on router R1?

Options:

- A- Option A

Flag	Network	LocalPref	MED
	Nexthop As-Path	Path-Id	VPNLabel
u*>i	192.168.1.0/27 10.10.10.5 65541	200 None	None -
i	192.168.1.0/27 10.10.10.6 65541	100 None	None -

B- Option B

Flag	Network	LocalPref	MED
	Nexthop As-Path	Path-Id	VPNLabel
u*>i	192.168.1.0/27 10.10.10.5 65541	200 None	None -
i	192.168.1.0/27 10.10.10.6 65541	100 None	None -

C- Option C

Flag	Network	LocalPref	MED
	Nexthop As-Path	Path-Id	VPNLabel
u*>i	192.168.1.0/27 10.10.10.5 65541	200 None	None -
i	192.168.1.0/27 10.10.10.6 65541	100 None	None -

D- Option D

Flag	Network	LocalPref	MED
	Nexthop As-Path	Path-Id	VPNLabel
u*>i	192.168.1.0/27 10.10.10.5 65541	200 None	None -
i	192.168.1.0/27 10.10.10.6 65541	100 None	None -

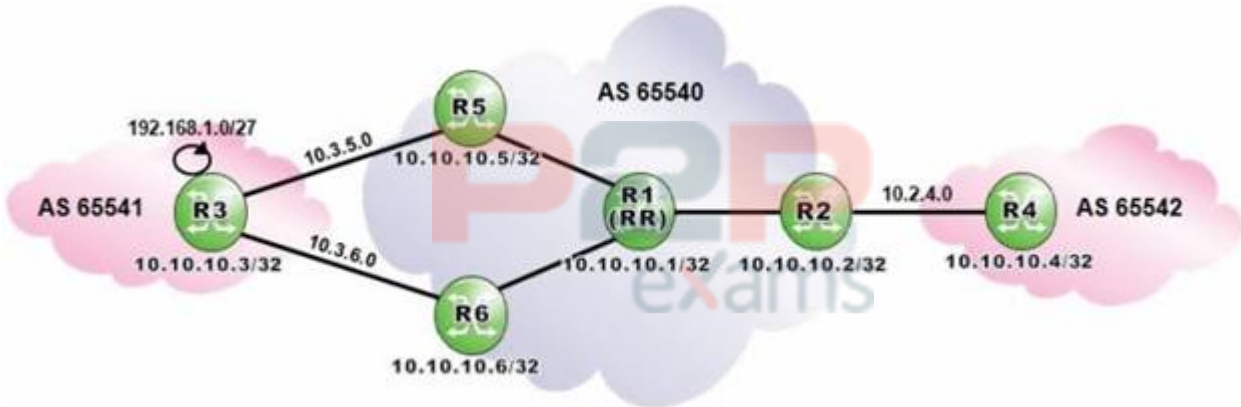
Answer:

D

Question 3

Question Type: MultipleChoice

Click the exhibit.



Router R1 is a route reflector with clients R2, R5 and R6. Router R3 advertises the prefix 192.168.1.0/27 to routers R5 and R6. Assuming that routers R1, R2 and R4 are configured with "add-paths ipv4 send 2 receive", what is the expected output of "show router bgp routes" when executed on router R2?

Options:

A- Option A

Flag	Network	LocalPref	MED
	Nexthop As-Path	Path-Id	VPNLabel
u*>i	192.168.1.0/27 10.10.10.1 65541	None None	None -
*i	192.168.1.0/27 10.10.10.1 65541	None None	None -

B- Option B

Flag	Network	LocalPref	MED
	Nexthop As-Path	Path-Id	VPNLabel
u*>i	192.168.1.0/27 10.10.10.1 65541	None None	None -
*i	192.168.1.0/27 10.10.10.1 65541	None None	None -

C- Option C

Flag	Network	LocalPref	MED
	Nexthop As-Path	Path-Id	VPNLabel
u*>i	192.168.1.0/27 10.10.10.1 65541	None None	None -
*i	192.168.1.0/27 10.10.10.1 65541	None None	None -

D- Option D

Flag	Network	LocalPref	MED
	Nexthop As-Path	Path-Id	VPNLabel
u*>i	192.168.1.0/27 10.10.10.1 65541	None None	None -
*i	192.168.1.0/27 10.10.10.1 65541	None None	None -

Answer:

A

Question 4

Question Type: MultipleChoice

A BGP session is in OpenConfirm state. Which of the following messages must be received to transition to Established state?

Options:

- A- Update
- B- Open
- C- Notification
- D- Keepalive

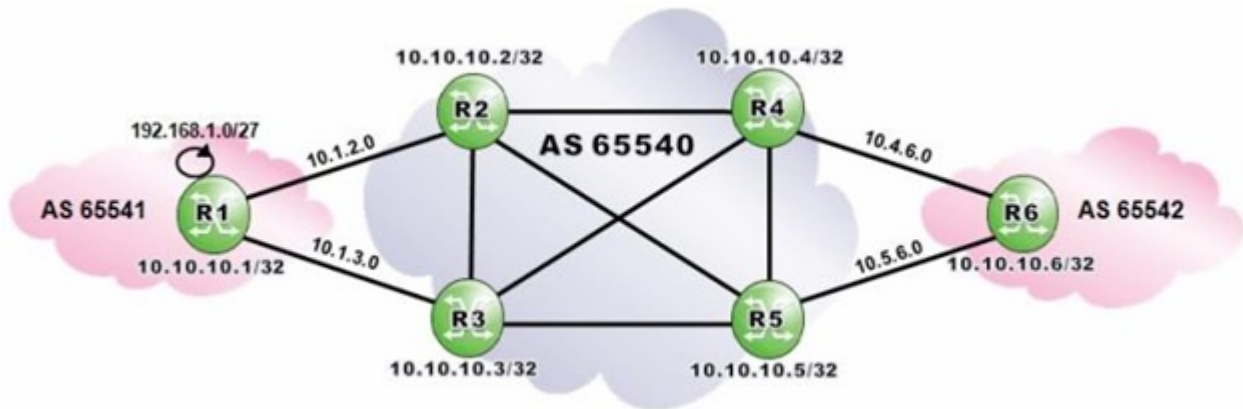
Answer:

D

Question 5

Question Type: MultipleChoice

Click the exhibit.



AS 65540 routers are iBGP fully-meshed. Assume routers R4, R5 and R6 are configured with addpaths ipv4 send 2 receive". Which routes to 192.168.0.1/27 is router R6 expected to have in its BGP routing table?

Options:

- A- Two routes from router R4.
- B- Two routes from router R5.
- C- Two routes; one from router R4 and one from router R5.
- D- Four routes; two from router R4 and two from router R5.

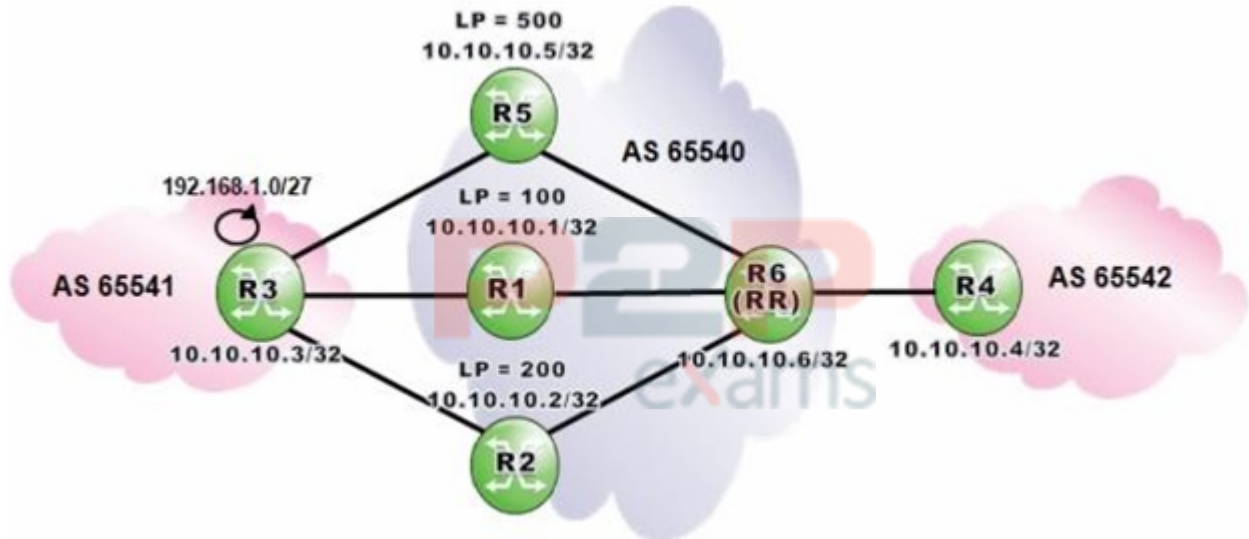
Answer:

D

Question 6

Question Type: MultipleChoice

Click the exhibit.



Router R6 is a route reflector for clients R1, R2 and R5 with local preferences 100, 200 and 500 respectively. Router R3 advertises prefix 192.168.1.0/27 to routers R1, R2 and R5 which are configured with advertise-external. Routers R4 and R6 are both configured with "add-paths ipv4 send 2 receive". Which routes to 192.168.0.1/27 is router R4 expected to have in its BGP routing table?

Options:

- A- The routes from routers R1, R2 and R5.
- B- The routes from routers R1 and R2.
- C- The routes from routers R2 and R5.
- D- Two routes are chosen at random and advertised to router R4.

Answer:

C

To Get Premium Files for 4A0-102 Visit

<https://www.p2pexams.com/products/4a0-102>

For More Free Questions Visit

<https://www.p2pexams.com/nokia/pdf/4a0-102>

20%
DISCOUNT

P2P
exams