



Free Questions for 4A0-104 by actualtestdumps

Shared by Golden on 06-06-2022

For More Free Questions and Preparation Resources

Check the Links on Last Page

Question 1

Question Type: MultipleChoice

Which of the following comparisons between E-pipes and VPLSes is FALSE?

Options:

- A-** They both function as a Layer 2 switch from the service provider's perspective.
- B-** They both support SAP encapsulations of null, dot1Q and Q-in-Q
- C-** They both use SAPs as the demarcation point between the customer and the provider.
- D-** MAC addresses are learned by VPLSes, but not by E-pipes.

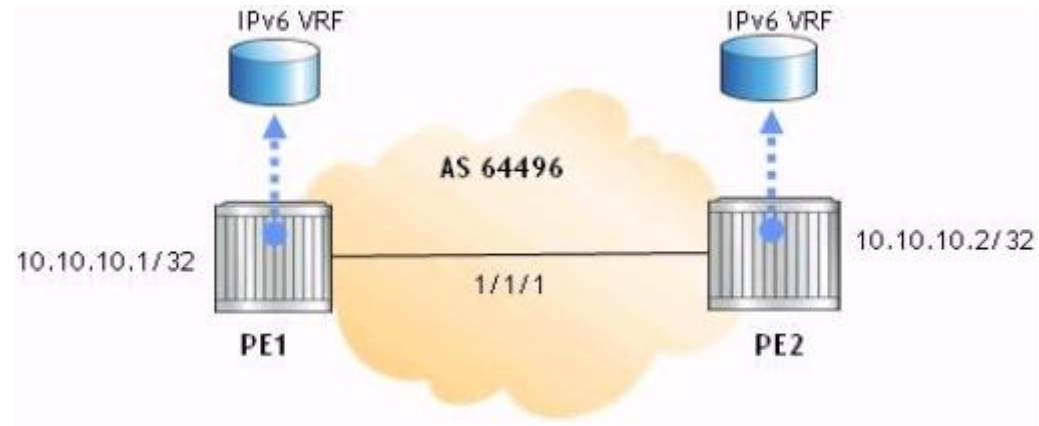
Answer:

A

Question 2

Question Type: MultipleChoice

Click the exhibit.



The two PEs are providing 6VPE and IPv4 VPRNs. The core network is IPv4/MPLS. Which of the following is the BGP family configuration for the MP-BGP on the PEs?

Options:

- A- family ipv4 ipv6
- B- family vpn-ipv4ipv6
- C- family vpn-ipv4 vpn-ipv6
- D- family ipv6 vpn-ipv6

Answer:

C

Question 3

Question Type: MultipleChoice

Which of the following about VPRNs is TRUE?

Options:

- A-** Customers must use the same routing protocol as the service provider.
- B-** Customers belonging to the same VPRN service must use the same subnet.
- C-** Service providers only need to perform configurations on the PEs to add additional VPRNs.
- D-** For each VPRN, only one customer can be connected at each PE

Answer:

C

Question 4

Question Type: MultipleChoice

Which of the following about the lsp-ping command on the Alcatel-Lucent 7750 SR is FALSE?

Options:

- A-** An echo request is sent based on the LSP's label stack.
- B-** Echo reply packets may not take the same path as the LSP.
- C-** The IP destination address is used to initiate echo requests,
- D-** The test fails if the LSP is not operationally up.

Answer:

C

Question 5

Question Type: MultipleChoice

A VPLS receives a frame with the single VLAN tag 35 on the Q-in-Q SAP 1/1/1:35.*. Which of the following describes default Alcatel-Lucent 7750 SR behavior?

Options:

- A- The frame is dropped.
- B- The VLAN tag is removed, and the frame is transported over the network.
- C- The VLAN tag is kept, and the frame is transported over the network.
- D- The VLAN tag is kept, a VLAN of 0 is added, and the frame is transported over the network.

Answer:

B

Question 6

Question Type: MultipleChoice

What happens by default on an Alcatel-Lucent 7750 SR when a VPLS accepts a tagged frame at the ingress SAP 1/1/1:100?

Options:

- A- The FCS is verified and kept in the customer frame. The VLAN tag is kept and transported over the network.
- B- The FCS is verified and kept in the customer frame. The VLAN tag is removed for transport over the network.
- C- The FCS is verified and removed from the frame. The VLAN tag is kept for transport over the network.
- D- The FCS is verified and removed from the frame. The VLAN tag is removed for transport over the network.

Answer:

D

Question 7

Question Type: MultipleChoice

A network consists of four PE routers. A customer requires a VPLS and has sites connected to each PE. The VPLS is fully meshed using IP/MPLS. How many SDPs must be configured on each PE?

Options:

A- 3

B- 4

C- 6

D- 8

Answer:

A

Question 8

Question Type: MultipleChoice

Which of the following about VPLS MAC learning is TRUE?

Options:

A- Mesh SDPs assist MAC learning by flooding traffic to other mesh SDPs.

B- A PE keeps a single FDB for all VPLSes it has.

C- Frames received on a SAP that are broadcast, multicast or unknown are flooded.

D- The FDB only stores the MAC addresses of remote sites.

Answer:

C

Question 9

Question Type: MultipleChoice

Click the exhibit.

```
R1# show router 100 fib 1
-----
FIB Display
-----
Prefix                                     Protocol
  NextHop
-----
10.1.5.0/24                                LOCAL
   10.1.5.0 (R1-R5)
10.6.4.0/24                                BGP_VPN
   10.10.10.4 (VPRN Label:131065 Transport:LDP)
10.10.10.5/32                               BGP
   10.1.5.5 Indirect (R1-R5)
10.10.10.6/32                               BGP_VPN
   10.10.10.4 (VPRN Label:131065 Transport:LDP)
192.168.10.0/24                             BGP
   10.1.5.5 Indirect (R1-R5)
192.168.20.0/24                             BGP_VPN
   10.10.10.4 (VPRN Label:131065 Transport:LDP)
-----
Total Entries : 6
```

Based on this output from PE router R1, how many other PEs are participating in the VPRN?

Options:

A- 0

B- 1

C- 2

D- 3

Answer:

B

Question 10

Question Type: MultipleChoice

Which of the following about VPN labels is FALSE?

Options:

- A- They are signaled between PE devices using MP-BGP
- B- They are swapped at each P router as a packet crosses the service provider network.
- C- They are also known as the inner label or service label.
- D- They indicate to the egress PE the VPRN to which a packet belongs.

Answer:

B

Question 11

Question Type: MultipleChoice

Which of the following about the Alcatel-Lucent 7750 SR sdp-ping is TRUE?

Options:

- A- It tests the IGP reachability of the far-end IP address of an SDP
- B- It tests that the MTU settings of a service are correct.
- C- It tests in-band, uni-directional or round-trip connectivity of SDPs.

D- It tests the reachability of hosts connected to an SDP

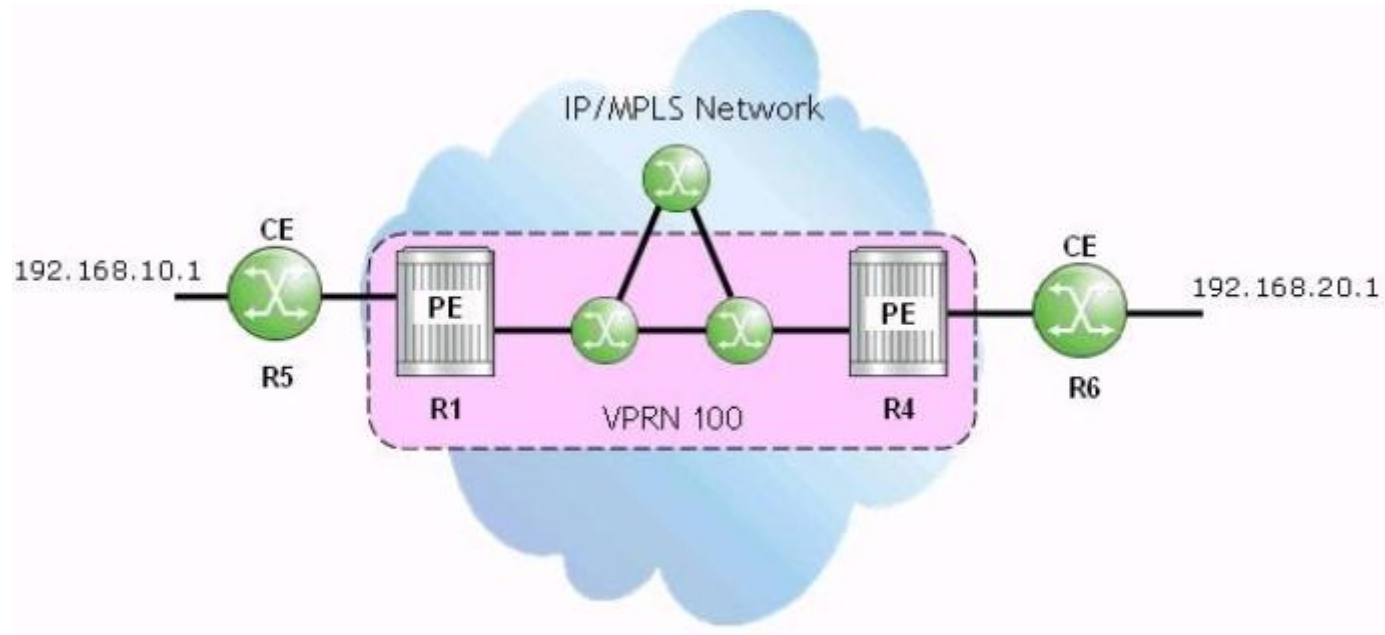
Answer:

C

Question 12

Question Type: MultipleChoice

Click the exhibit.



The CEs use BGP and export policies to advertise their local prefixes with the VPRN on their PEs. If the VPRN is functioning properly, which of the following commands will succeed when performed on router R1?

Options:

- A- 'ping 192.168.20.1'
- B- 'oam vprn-ping 100 source 192.168.10.1 destination 192.168.20.1'
- C- 'oam vprn-ping 100 source 192.168.20.1 destination 192.168.10.1'
- D- 'ping 10.10.10.6' (router R6's system IP)

Answer:

B

To Get Premium Files for 4A0-104 Visit

<https://www.p2pexams.com/products/4a0-104>

For More Free Questions Visit

<https://www.p2pexams.com/nokia/pdf/4a0-104>

