



Free Questions for 4A0-104 by vceexamstest

Shared by Park on 15-04-2024

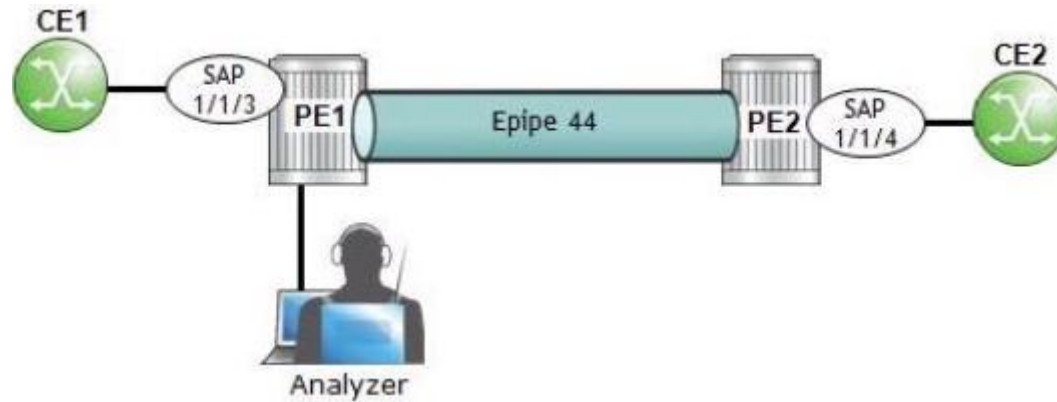
For More Free Questions and Preparation Resources

Check the Links on Last Page

Question 1

Question Type: MultipleChoice

Click the exhibit.



An operator at PE1 wants to analyze the traffic between CE1 and PE1 on SAP 1/1/3, On an Nokia 7750 SR, which of the following is NOT required as part of the configuration?

Options:

- A- A mirror source with a defined source type.
- B- A mirror source defined with an SDP destination.

C- A mirror destination with a SAP defined.

D- A mirror destination and a mirror source with the same service ID.

Answer:

B

Question 2

Question Type: MultipleChoice

Click the exhibit.

```
A:R1# oam [ ] ? "clockwise" detail
[ ] 0 hops min, 0 hops max, 116 byte packets
1 10.10.10.2 rtt=1.55ms rc=8 (DSRtrMatchLabel)
   DS 1: IfAddr 10.2.4.4 MRU=1564 label=131059 proto=4 (RSVP-TE)
2 10.10.10.4 rtt=1.64ms rc=8 (DSRtrMatchLabel)
   DS 1: IfAddr 10.3.4.3 MRU=1564 label=131062 proto=4 (RSVP-TE)
3 10.10.10.3 rtt=0.843ms rc=3 (EgressRtr)
A:R1#
```

Which tool produced this output?

Options:

A- mac-trace

B- svc-ping

C- lsp-trace

D- traceroute

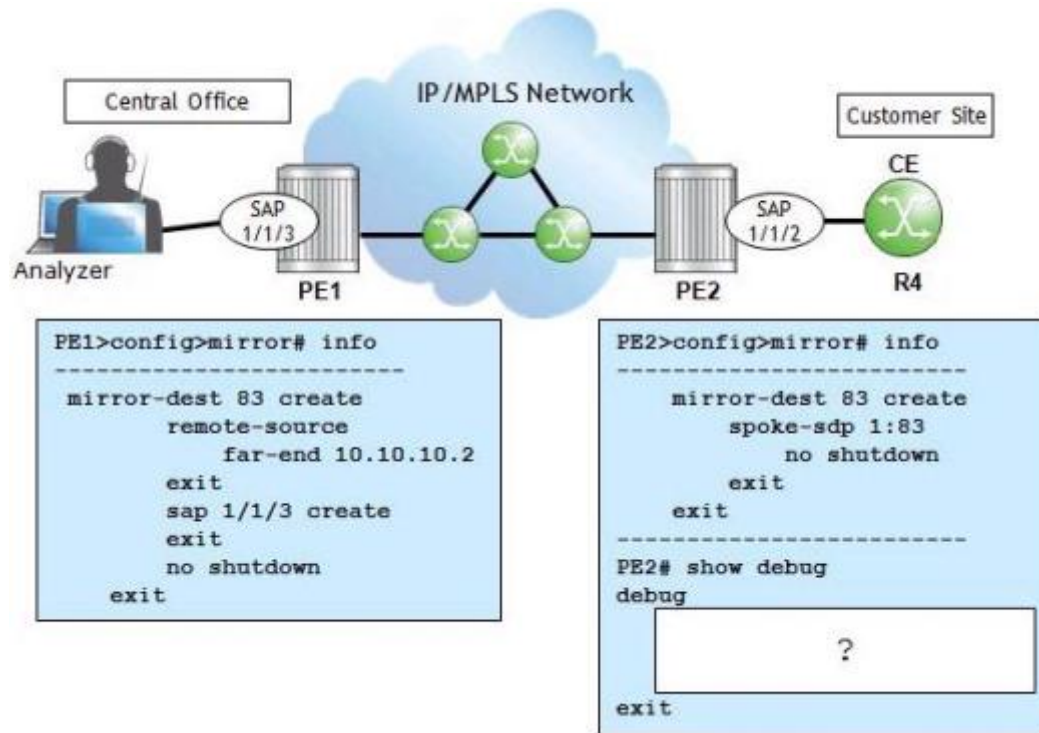
Answer:

C

Question 3

Question Type: MultipleChoice

Click the exhibit.



PE1 and PE2 are Nokia 7750 SRs. Which of the following is the missing configuration required on PE2 to complete the mirror?

- A. mirror-source 83
sap 1/1/2 egress ingress
no shutdown
exit
- B. mirror-source 1
sap 1/1/2 egress ingress
no shutdown
exit
- C. mirror-dest 83
sap 1/1/3
no shutdown
exit
- D. mirror-dest 1
sap 1/1/3 egress ingress
no shutdown
exit

Options:

- A- Option A
- B- Option B
- C- Option C
- D- Option D

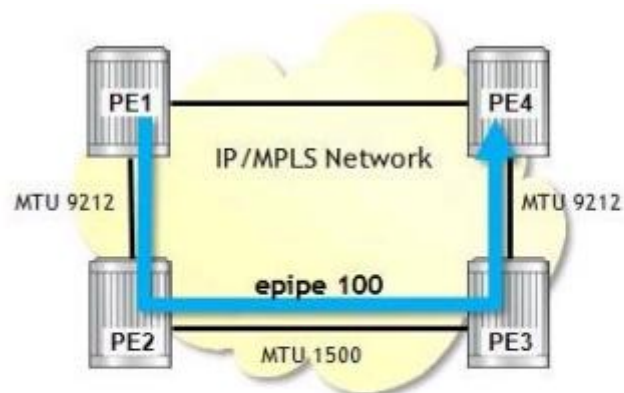
Answer:

A

Question 4

Question Type: MultipleChoice

Click the exhibit.



```
PE1# oam sdp-mtu 4 size-inc 1475 1500 step 1  
<output omitted>  
???
```

E-pipe 100 is using an SDP (4) with an LSP that uses the path shown (PE1-PE2-PE3-PE4). Which of the following is the expected output from the OAM command?

- A. PE1#oam sdp-mtu 4 size-inc 1475 1500 step 1

Size	Sent	Response
------	------	----------

1475	.	Success
------	---	---------

1476	.	Success
------	---	---------

1477	.	Success
------	---	---------

1478	.	Success
------	---	---------

1479	...	Request Timeout
------	-----	-----------------

Maximum Response Size: 1478

- B. PE1#oam sdp-mtu 4 size-inc 1475 1500 step 1

Size	Sent	Response
------	------	----------

1475	.	Success
------	---	---------

1476	.	Success
------	---	---------

1477	.	Success
------	---	---------

< ... omitted etc. >

1492	.	Success
------	---	---------

1493	...	Request Timeout
------	-----	-----------------

Maximum Response Size: 1492

- C. PE1#oam sdp-mtu 4 size-inc 1475 1500 step 1

Size	Sent	Response
------	------	----------

1475	.	Success
------	---	---------

1476	.	Success
------	---	---------

1477	.	Success
------	---	---------

< ... omitted etc. >

1500	.	Success
------	---	---------

Maximum Response Size: 1500

- D. PE1#oam sdp-mtu 4 size-inc 1475 1500 step 1

Size	Sent	Response
------	------	----------

1475	.	Success
------	---	---------

Options:

A- Option A

B- Option B

C- Option C

D- Option D

Answer:

A

Question 5

Question Type: MultipleChoice

On an Nokia 7750 SR, which of the following about a VPLS is FALSE?

Options:

- A- By default, the VC ID on the mesh SDPs of a VPLS are set to the service ID.
- B- A VPLS appears to the customer as a direct Ethernet connection.
- C- Mesh SDPs are used for VPLSes to avoid loops.
- D- By default, T-LDP is used for signaling service labels.

Answer:

B

Question 6

Question Type: MultipleChoice

By default, what does the Nokia 7750 SR do when a frame with an unknown destination address is received in a VPLS?

Options:

- A- It drops the frame.
- B- It floods the frame to all PEs participating in the service.
- C- It sends a destination unreachable message back to the originating host.

D- It sends the frame to the closest neighbor.

Answer:

B

Question 7

Question Type: MultipleChoice

Which of the following about Hierarchical VPLS is FALSE?

Options:

- A-** They allow a VPLS to scale more easily.
- B-** They use mesh SDPs to connect smaller VPLSes together.
- C-** They allow a service to span multiple metro networks.
- D-** They simplify the configuration required when adding new PEs.

Answer:

B

Question 8

Question Type: MultipleChoice

A customer has sites on three different Nokia 7750 SRs. The customer requires a fully-meshed VPLS. Which of the following is TRUE?

Options:

- A- Each router requires 1 SDP.
- B- Each router requires 2 SDPs.
- C- Each router requires 3 SDPs.
- D- Each router requires 6 SDPs.

Answer:

B

Question 9

Question Type: MultipleChoice

Click the exhibit. This output is from router R4. Service 333 is a VPLS. Why might the peer 10.10.10.1 have the same value for IngLbl and EgrLbl?

Options:

- A- The labels are of local significance only, so other routers can use the same value.
- B- 10.10.10.1 has yet to send its own unique label.
- C- Router R4 is using the same tunnel to send and receive to 10.10.10.1.
- D- The service on 10.10.10.1 is down, so it is rejecting packets.

Answer:

A

Question 10

Question Type: MultipleChoice

The SAP 1/1/1:2.3 receives an Ethernet frame with outer VLAN tag 5 and inner VLAN tag 3. Which of the following is TRUE?

Options:

- A-** The frame is dropped.
- B-** The frame's outer tag is changed to match the SAP, and it is accepted.
- C-** The frames outer tag is dropped, and the frame is accepted.
- D-** The frame's tags are removed, and the frame is accepted.

Answer:

A

To Get Premium Files for 4A0-104 Visit

<https://www.p2pexams.com/products/4a0-104>

For More Free Questions Visit

<https://www.p2pexams.com/nokia/pdf/4a0-104>

