



**Free Questions for 4A0-106 by [braindumpscollection](#)**

**Shared by [Dixon](#) on [15-04-2024](#)**

**For More Free Questions and Preparation Resources**

**[Check the Links on Last Page](#)**

## Question 1

---

### Question Type: MultipleChoice

---

On a PE router, the VRF table for VPRN 10 contains: one local route, two BGP routes learned from a local CE, and three tunneled routes learned from a remote site. If we execute the command "configure service vprn 10 maximum-routes 2 log-only" on this PE router, how many routes are expected to be in the VRF?

### Options:

---

- A- Five routes: the local route, the two BGP routes learned from the local CE, and two tunneled routes.
- B- Six routes: the local route, the two BGP routes learned from the local CE, and three tunneled routes.
- C- Two routes: the local route and one tunneled route.
- D- Three routes: the local route and two tunneled routes.
- E- Two routes: the local route and one BGP route learned from the local CE.

### Answer:

---

B

## Question 2

---

**Question Type: MultipleChoice**

---

How are local CE routes associated with the appropriate VRF at the PE?

**Options:**

---

- A-** Based on the interface on which they are received.
- B-** Based on the Route Distinguisher.
- C-** Based on the Route Target.
- D-** Based on the Service Identifier.

**Answer:**

---

A

## Question 3

---

**Question Type: MultipleChoice**

---

Which of the following about the Route Target is TRUE?

### Options:

---

- A- The Route Target is added to an IPv4 route to create the VPN-IPv4 route.
- B- The Route Target is an extended community string that identifies VPN membership.
- C- A route can have only one Route Target.
- D- The Route Target is a 64-bit value added to customer prefixes to make them unique.

### Answer:

---

B

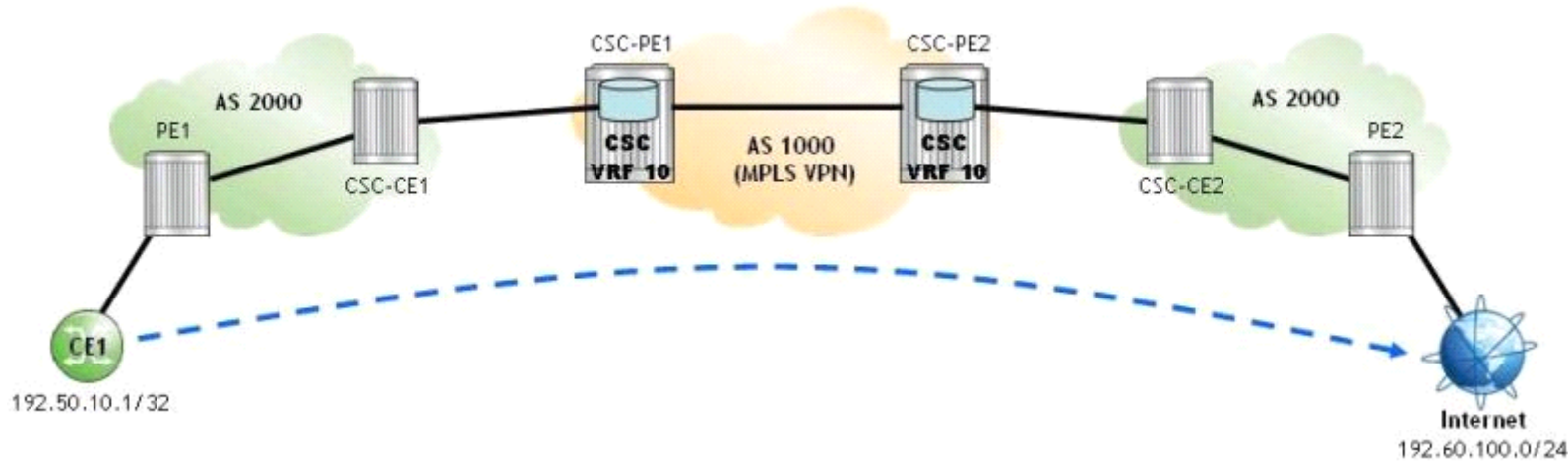
## Question 4

---

**Question Type:** MultipleChoice

---

Click the exhibit.



A Carrier Supporting Carrier (CSC) VPRN is configured for a customer carrier who is an Internet Service Provider (ISP). If CE1 sends an IP packet to 192.60.100.1, which of the following is FALSE?

### Options:

- A- PE1 pushes an LDP transport label.
- B- CSC-PE1 pops the BGP label and pushes two labels: a VPN label and an MPLS transport label.
- C- CSC-PE2 pops the MPLS transport label and pushes a BGP label.
- D- CSC-CE2 pops the BGP label and pushes an LDP transport label.

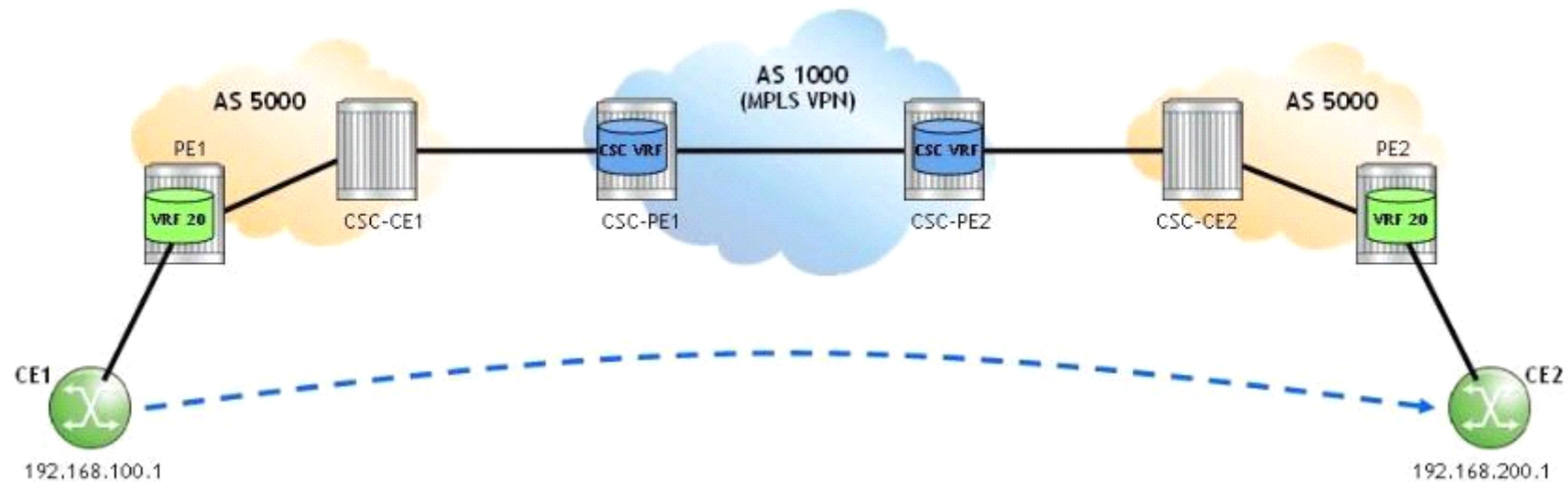
### Answer:

C

## Question 5

Question Type: MultipleChoice

Click the exhibit.



A Carrier Supporting Carrier (CSC) VPRN is configured for a customer carrier who is a BGP/MPLS service provider. If CE1 sends an IP packet to 192.168.200.1, which of the following is FALSE?

Options:

- A- PE1 pushes a VPN label, a BGP label, and an LDP transport label on the IP packet.
- B- CSC-CE1 pops the LDP label and swaps the BGP label.
- C- CSC-PE1 pops the BGP label, swaps the VPN label, and pushes an LDP transport label.
- D- CSC-PE2 pops the LDP and VPN labels and pushes a BGP label.

**Answer:**

---

C

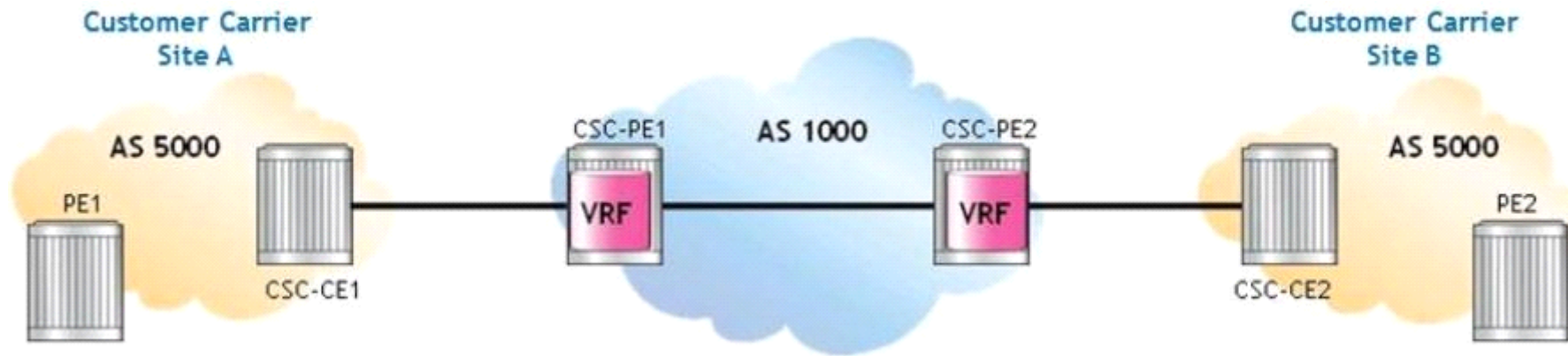
## Question 6

---

**Question Type:** MultipleChoice

---

Click the exhibit.



For the Carrier Supporting Carrier (CSC) VPRN, which routes are advertised from CSC-CE1 to PE1?

**Options:**

---

- A- IGP/LDP or labeled BGP routes for all PE system addresses in AS 5000 Site B
- B- VPN-IPv4 routes for all PE system addresses in AS 5000 Site B
- C- IGP/LDP or labeled BGP routes for all PE system addresses in AS 1000
- D- VPN-IPv4 routes for all PE system addresses in AS 1000

**Answer:**

---

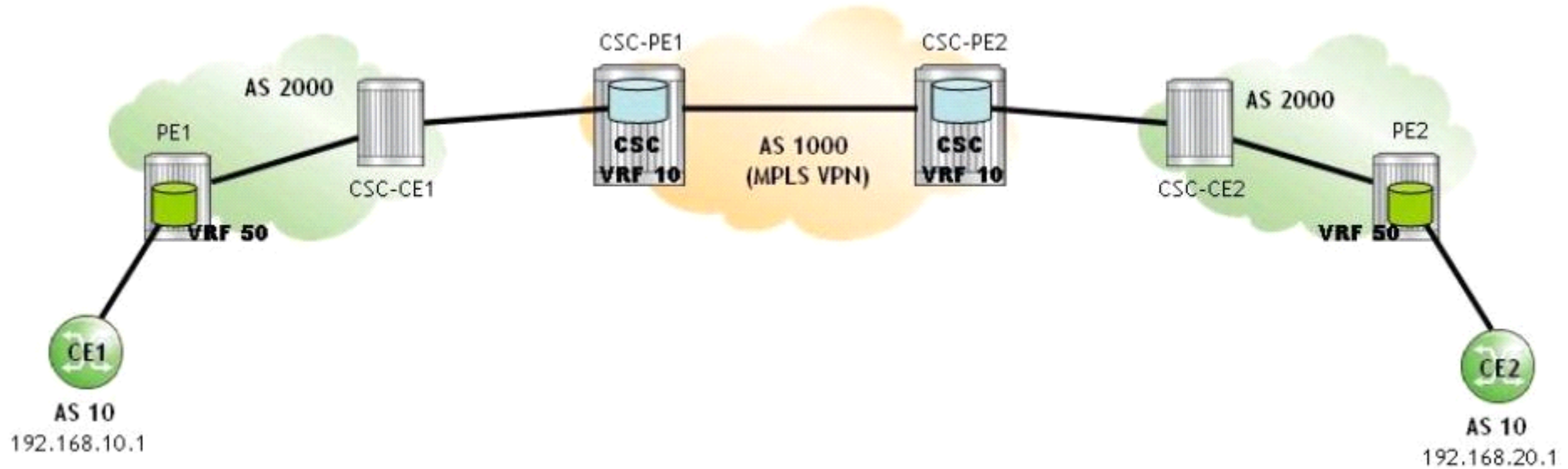
A



## Question 7

Question Type: MultipleChoice

Click the exhibit.



A Carrier Supporting Carrier (CSC) VPRN is configured for a customer carrier who is a BGP/MPLS service provider. Which of the following describes the routes present in PE1's global routing table?

Options:

- A-** The system address of PE2 is present. The system addresses of CSC-PE1 and CSC-PE2 are not present.
- B-** The system addresses of PE2, CSC-PE1 and CSC-PE2 are all present.
- C-** The system address of CSC-CE1, the route 192.168.10.1, and the route 192.168.20.1 are all present.
- D-** The system address of PE2 and the route 192.168.20.1 are present.

**Answer:**

---

A

## Question 8

---

**Question Type:** MultipleChoice

---

For a Carrier Supporting Carrier (CSC) VPRN where the customer carrier is an ISP that provides Internet connectivity to its end-customers, which of the following is FALSE?

**Options:**

---

- A-** Customer carrier PE routers residing in different sites must run iBGP between them to exchange customers' routes.
- B-** MPLS can be used in the customer carrier network to improve scalability.

- C-** The customer carrier network can be a pure IP network.
- D-** A CSC VPRN is configured on the CSC-CE to forward data packets to the network provider.

**Answer:**

---

D

## Question 9

---

**Question Type: MultipleChoice**

---

Which of the following about inter-AS model C VPRN is FALSE?

**Options:**

---

- A-** ASBRs exchange labeled IPv4 routes for the system addresses of PE routers.
- B-** It requires a route reflector to be configured in each AS for successful operation.
- C-** VPN-IPv4 routes are neither maintained nor distributed by the ASBRs.
- D-** PE routers in different ASes exchange VPN-IPv4 routes directly between each other using MP-eBGP.

**Answer:**

---

B

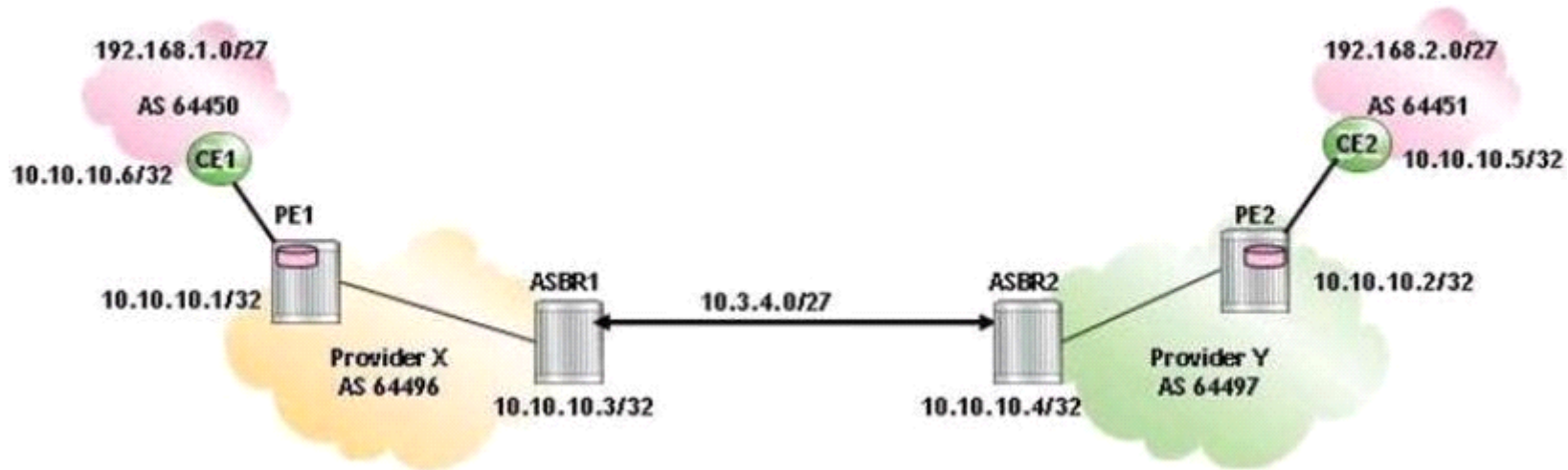
## **Question 10**

---

**Question Type: MultipleChoice**

---

Click the exhibit.



```
ASBR1# show router bgp inter-as-label
=====
BGP Inter-AS labels
=====
NextHop                Received      Advertised    Label
                        Label         Label         Origin
-----
10.10.10.1             131070       131068        Internal
10.3.4.4               131068       131069        External
```

For the Inter-AS model B VPRN, which of the following about the inter-as-label output on ASBR1 is TRUE?

Options:

---

- A- ASBR1 includes label 131069 in the route update sent to ASBR2.
- B- ASBR1 includes label 131068 in the route update sent to ASBR2.
- C- ASBR1 includes label 131068 in the route update sent to PEL
- D- ASBR1 includes labels 131068 and 131069 in the route update sent to ASBR2.

**Answer:**

---

B

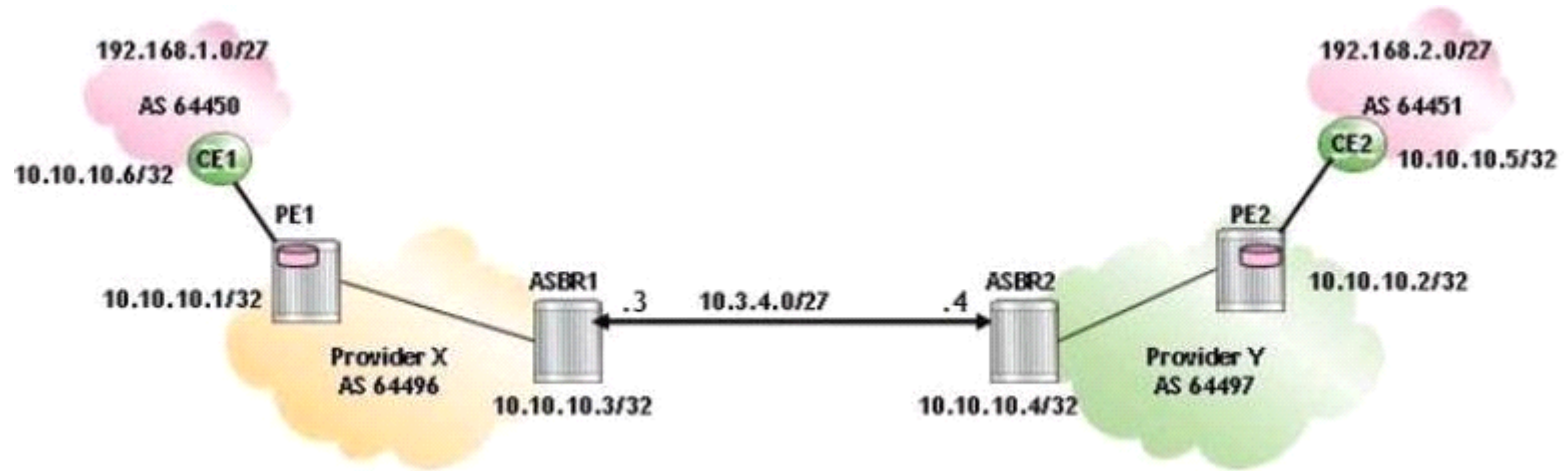
## Question 11

---

**Question Type:** MultipleChoice

---

Click the exhibit.



For the inter-AS model B VPRN, which of the following is the correct BGP configuration on ASBR1?

○ A. ASBR1>config>router>bgp# info

```
-----  
enable-inter-as-vpn  
group "ASBR"  
family ipv4  
neighbor 10.10.10.4  
type external  
peer-as 64497  
exit
```

○ B. ASBR1>config>router>bgp# info

```
-----  
enable-inter-as-vpn  
group "ASBR"  
family vpn-ipv4  
neighbor 10.10.10.4  
type external  
peer-as 64497  
exit
```

○ C. ASBR1>config>router>bgp# info

```
-----  
enable-inter-as-vpn  
group "ASBR"  
family vpn-ipv4  
neighbor 10.3.4.4  
type external  
peer-as 64497  
exit
```

○ D. ASBR1>config>router>bgp# info

```
-----  
enable-inter-as-vpn  
group "ASBR"  
family ipv4  
neighbor 10.3.4.4
```



**Options:**

---

**A-** Option A

**B-** Option B

**C-** Option C

**D-** Option D

**Answer:**

---

C

**To Get Premium Files for 4A0-106 Visit**

**<https://www.p2pexams.com/products/4a0-106>**

**For More Free Questions Visit**

**<https://www.p2pexams.com/nokia/pdf/4a0-106>**

