



Free Questions for 4A0-106 by dumpshq

Shared by Sears on 12-12-2023

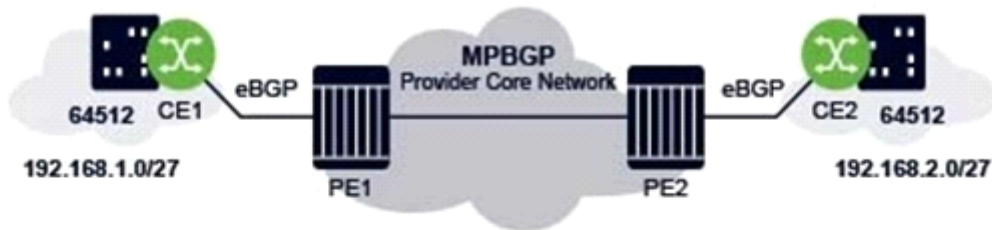
For More Free Questions and Preparation Resources

Check the Links on Last Page

Question 1

Question Type: MultipleChoice

The CLI command "remove-private" is configured on PE1 to eliminate BGP loops in the VPRN.



```
CE1# show router bgp routes
=====
BGP Router ID:10.10.10.3   AS:-----   Local AS:-----
=====
Legend -
Status codes  : u - used, s - suppressed, h - history, d - decayed, * - valid
                l - leaked, x - stale, > - best, b - backup, p - purge
Origin codes  : i - IGP, e - EGP, ? - incomplete
=====
BGP IPv4 Routes
=====
Flag   Network           LocalPref  MED
      Nexthop (Router) Path-Id    Label
      As-Path
-----
u*>i  192.168.2.0/27     None       None
      10.1.3.1       None       -
      -----
```

For the displayed route, what is the value of the AS-Path field?

Options:

A- 64496 64512

B- 64512

C- 64496

D- 64512 64496

Answer:

B

Question 2

Question Type: MultipleChoice

Which of the following is NOT a requirement for eBGP load balancing to be effective?

Options:

A- The route distinguisher of the VPRN on the local PE must be different from the route distinguisher of the remote PEs.

- B-** ecmp must be configured within the VPRN instance.
- C-** eibgp-loadbalance must be configured within the VPRN instance.
- D-** ibgp-multipath must be configured within the VPRN instance.

Answer:

A

Question 3

Question Type: MultipleChoice

For a Carrier Supporting Carrier (CSC) VPRN where the customer carrier is an ISP that provides Internet connectivity to its end-customers, which of the following is TRUE?

Options:

- A-** The customer carrier network must be MPLS-enabled.
- B-** VPRN instances are created on the CSC-CE routers.
- C-** All traffic exchanged between end-customers is carried over a single CSC VRF.

D- Customer carrier PEs residing in different sites must run MP-iBGP between them to exchange customers' routes.

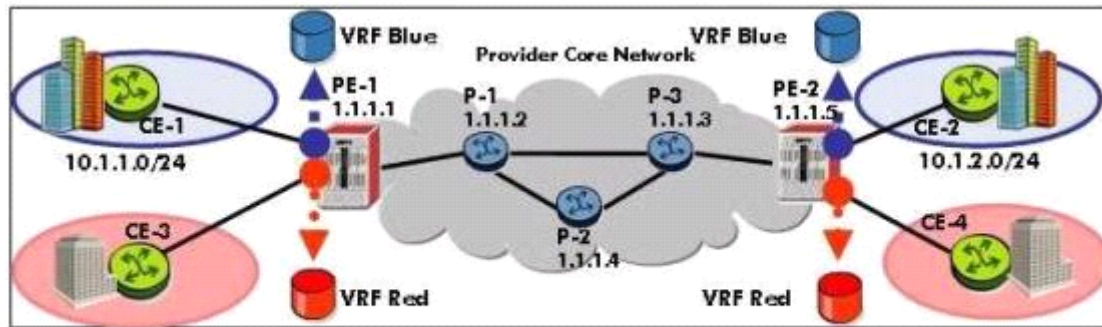
Answer:

C

Question 4

Question Type: MultipleChoice

Click the exhibit.



```

PE-2# show router mpls label in-use 32 131071
=====
MPLS Labels from 32 to 131071 (In-use)
=====
Label           Label Type      Label Owner
-----
131070          dynamic        VPRN
131071          dynamic        RSVP
=====
In-use labels (Owner: All) in specified range : 2
In-use labels in entire range                : 2
=====
PE-2#

```

Which of the following best describes the output from the Nokia 7750 SR?

Options:

- A-** RSVP-TE has signaled a VPRN label.
- B-** RSVP-TE has signaled both VPRN and LSP labels.

C- MP-BGP has signaled both VPRN and LSP labels.

D- MP-BGP has signaled a VPRN label.

Answer:

D

Question 5

Question Type: MultipleChoice

A provider core consists of 4 PE and 2 P routers. A fully meshed VPRN service is configured on all 4 PEs, and MPLS LSP-based SDPs are used for the service configuration. How many SDPs must be bound to the VPRN service on each PE?

Options:

A- Two SDPs must be bound to the VPRN service on each PE.

B- Three SDPs must be bound to the VPRN service on each PE.

C- Five SDPs must be bound to the VPRN service on each PE.

D- Twelve SDPs must be bound to the VPRN service on each PE.

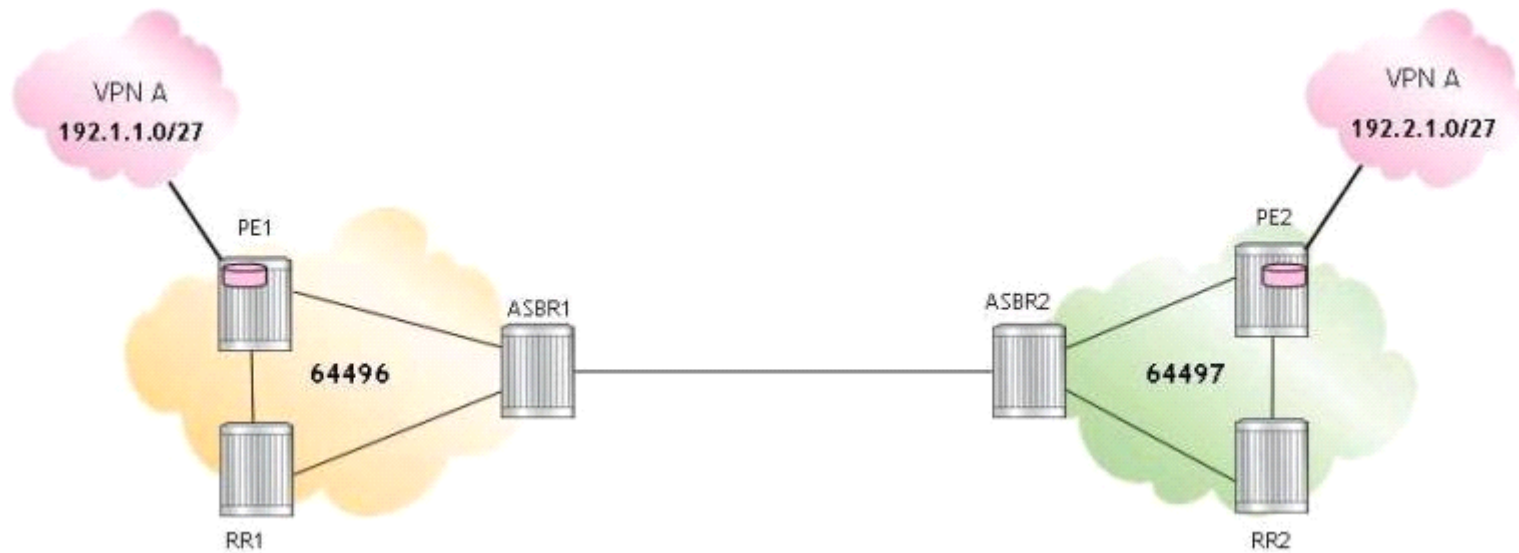
Answer:

B

Question 6

Question Type: MultipleChoice

Click the exhibit.



For the inter-AS model C VPRN, which of the following is FALSE when an IP packet is sent from 192.1.1.1 to 192.2.1.1?

Options:

- A- PE1 pushes two labels on the IP packet and forwards it to ASBR1.
- B- ASBR1 pops the LDP label, swaps the BGP label and forwards the IP packet to ASBR2.
- C- ASBR2 forwards the IP packet with two labels to PE2.
- D- PE2 pops the labels and forwards the unlabeled IP packet to its destination.

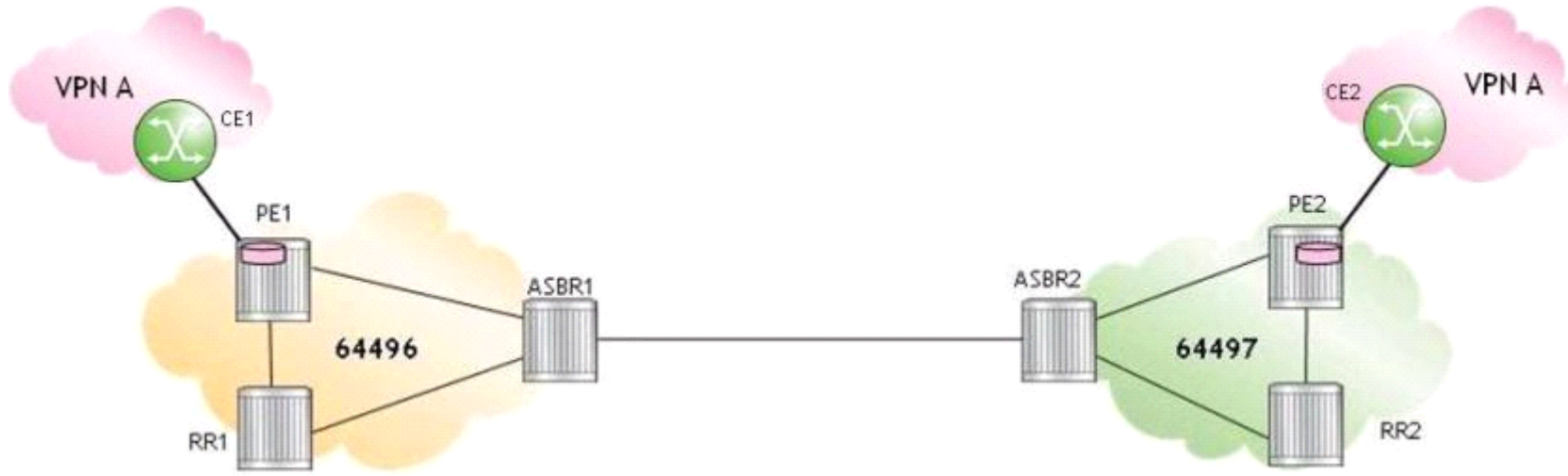
Answer:

A

Question 7

Question Type: MultipleChoice

Click the exhibit.



For the inter-AS model C VPRN, how many labels does PE1 push on a data packet received from CE1 and destined to CE2?

Options:

- A- 1
- B- 2
- C- 3
- D- 4

Answer:

C

Question 8

Question Type: MultipleChoice

Which of the following about scaling techniques for route reflectors is FALSE?

Options:

- A-** Logical Partitioning of route reflectors works best when PEs are partitioned to support different VPRNs.
- B-** Logical Partitioning of route reflectors is simple and scalable, but requires more hardware.
- C-** Filtering at route reflectors requires either inbound filtering at the route reflector or outbound filtering at the PE routers.
- D-** Filtering at route reflectors allows the route reflector to filter routes received from PEs and only accept routes with a certain route distinguisher.

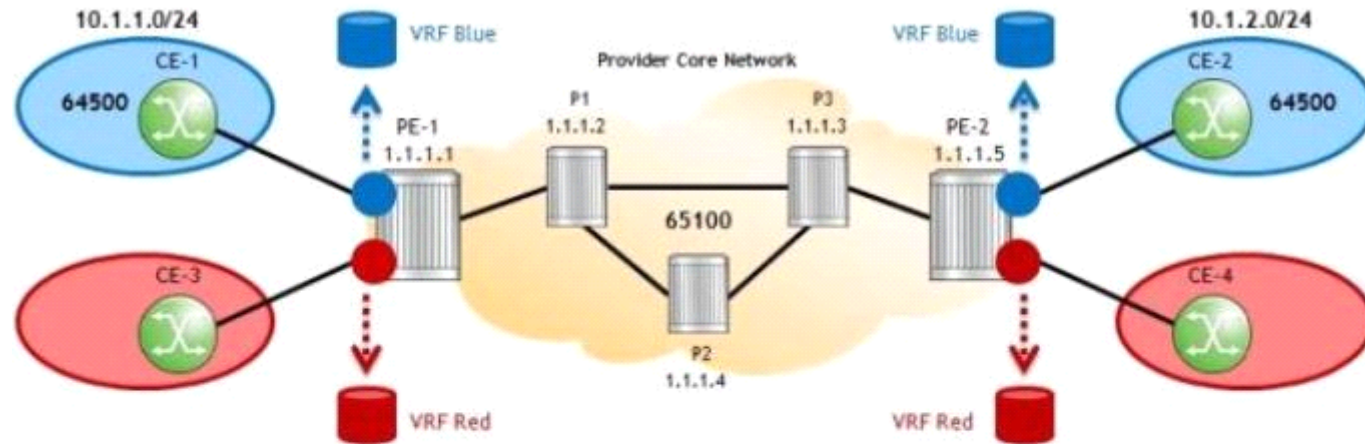
Answer:

D

Question 9

Question Type: MultipleChoice

Click the exhibit.



```
PE-1# configure router bgp
PE-1>config>router>bgp$ family vpn-ipv4
PE-1>config>router>bgp$ group BGP-Peers
PE-1>config>router>bgp>group$ peer-as 65100
PE-1>config>router>bgp>group$ local-address 1.1.1.1
PE-1>config>router>bgp>group$ neighbor 1.1.1.5
PE-1>config>router>bgp>group>neighbor$ as-override
PE-1>config>router>bgp>group>neighbor$ exit all
PE-1#
```

The AS-override method is used to prevent BGP loops in the blue customer VPRN. Which statement about the configuration is TRUE?

Options:

- A- the configuration is complete and correct.
- B- 'as-override' should be configured under the BGP context.
- C- 'as-override' should be configured under the group context.
- D- 'as-override' should not be part of this configuration.

Answer:

D

To Get Premium Files for 4A0-106 Visit

<https://www.p2pexams.com/products/4a0-106>

For More Free Questions Visit

<https://www.p2pexams.com/nokia/pdf/4a0-106>

