



Nokia 4A0-106 Mock Exam

Shared by Steele on 17-06-2026

For More Free Questions and Preparation Resources

Check the Links on Last Page



Question 1

Question Type: MultipleChoice

What are the two main benefits of a hub and spoke VPRN design? (Choose two)

Options:

- A- Reduced number of VPN tunnels that need to be managed
- B- Centralized filtering policies with the introduction of a hub site
- C- Optimal routing between all sites
- D- Limited configuration required on the hub PE device

Answer:

A, B

Question 2

Question Type: MultipleChoice

Click the exhibit.



For the inter-AS model A VPRN. BGP is used as the PE-CE routing protocol. Which option best statements about the control plane operation is TRUE?

Options:

- A- PE1 sends an IPv4 update for prefix 192.168.1.0/27 via MP-BGP to ASBR1.

- B- ASBR1 sends an IPv4 update for prefix 192.168.1.0/27 to ASBR2.
- C- ASBR1 transforms an IPv4 update for prefix 192.168.1.0/27 to a VPN-IPv4 route; allocates VPN label V1 and sends the update to ASBR2.
- D- ASBR2 accepts a VPN-IPv4 update from ASBR1, then sends the update to PE2 via MP-BGP.

Answer:

B

Question 3

Question Type: MultipleChoice

Which of the following about BGP loops in a VPRN environment is TRUE?

Options:

- A- Traditional BGP loop detection mechanisms are unable to detect a loop in a VPRN scenario.
- B- BGP loops are detected in a VPRN when the customer has separate sites using the same BGP autonomous system number.
- C- The Nokia 7750 SR rejects routes containing AS_PATH loops by default.
- D- When 'remove-private' is configured at a PE, all routes received from the associated CE will have private AS numbers removed.

Answer:

B

Question 4

Question Type: MultipleChoice

Which of the following about a full mesh VPRN design is FALSE?

Options:

- A- Each customer site has a logically direct route to every other customer site.
- B- It provides optimal routing between all sites.
- C- It allows access between all CE devices and all sites participating in the same VRF.
- D- It requires a full BGP mesh in the provider core.

Answer:

D

Question 5

Question Type: MultipleChoice

Which of the following protocols does the Nokia 7750 SR support to signal VPRN service labels?

Options:

- A- Targeted-LDP
- B- BGP
- C- MP-BGP
- D- RSVP-TE

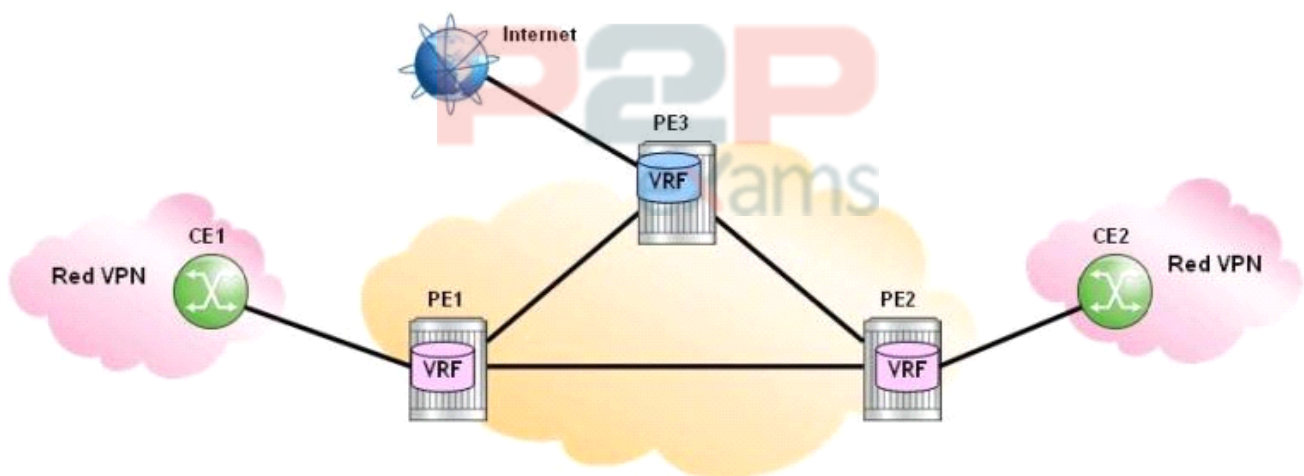
Answer:

C

Question 6

Question Type: MultipleChoice

Click the exhibit.



PE3 learns Internet routes via its VRF interface to the Internet peering router and stores them in its Internet VRF. CE1 is connected to the Red VPN and requires Internet access via its Red VRF interface. Which of the following statements do not fulfill this requirement?

Options:

- A- PE1 advertises the Red VPN routes and a default route to PE3.
- B- The Internet VRF on PE3 imports the Red VPN routes advertised by PE1.
- C- PE1 imports all Internet routes and advertises them to CE1 via the Red VRF.
- D- PE3 advertises a default route from its Internet VRF instead of advertising all Internet routes.

Answer:

A

Question 7

Question Type: MultipleChoice

An SDP has been configured for a VPRN service using an existing MPLS LSP and the configuration shown below. Which of the statements below is true about the configuration on an Nokia 7750 SR?

Options:

- A- The configuration is incomplete as the uto-bind command is missing
- B- The configuration is incomplete as the ignaling off command is missing
- C- The configuration is incorrect as VPRN service does not support spoke-sdp configuration using MPLS LSPs
- D- The configuration is incorrect as Line 8 should be poke-sdp 42 mpls create
- E- The configuration is complete and correct

Answer:

B

Question 8

Question Type: MultipleChoice

A provider core consists of 4 PE and 2 P routers. A fully meshed VPRN service is configured on all 4 PEs, and MPLS LSP-based SDPs are used for the service configuration. How many SDPs must be bound to the VPRN service on each PE?

Options:

- A- Two SDPs must be bound to the VPRN service on each PE.
- B- Three SDPs must be bound to the VPRN service on each PE.
- C- Five SDPs must be bound to the VPRN service on each PE.
- D- Twelve SDPs must be bound to the VPRN service on each PE.

Answer:

B



To Get Premium Files for 4A0-106 Visit

<https://www.p2pexams.com/products/4a0-106>

For More Free Questions Visit

<https://www.p2pexams.com/nokia/pdf/4a0-106>

20%
DISCOUNT

P2P
exams