



## Nokia 4A0-108 Mock Exam

Shared by Blankenship on 17-06-2026

**For More Free Questions and Preparation Resources**

Check the Links on Last Page



## Question 1

---

Question Type: MultipleChoice

---

Which option best about data delivery is FALSE?

Options:

- A- For multicast delivery, the source sends a single copy of each packet regardless of the number of receivers.
- B- For unicast delivery, the source sends a single copy of each packet regardless of the number of receivers.
- C- For broadcast delivery, the source sends a single copy of each packet regardless of the number of receivers.
- D- For anycast delivery, the source sends a single copy of each packet regardless of the number of receivers.

Answer:

B

## Question 2

---

Question Type: MultipleChoice

---

Who periodically sends IGMP Host Membership Queries?

Options:

- A- The router elected as Querier on a LAN
- B- The first host to expire their local suppression timer
- C- Only the multicast enabled hosts on a LAN
- D- All routers on a LAN
- E- All multicast enabled routers on a LAN

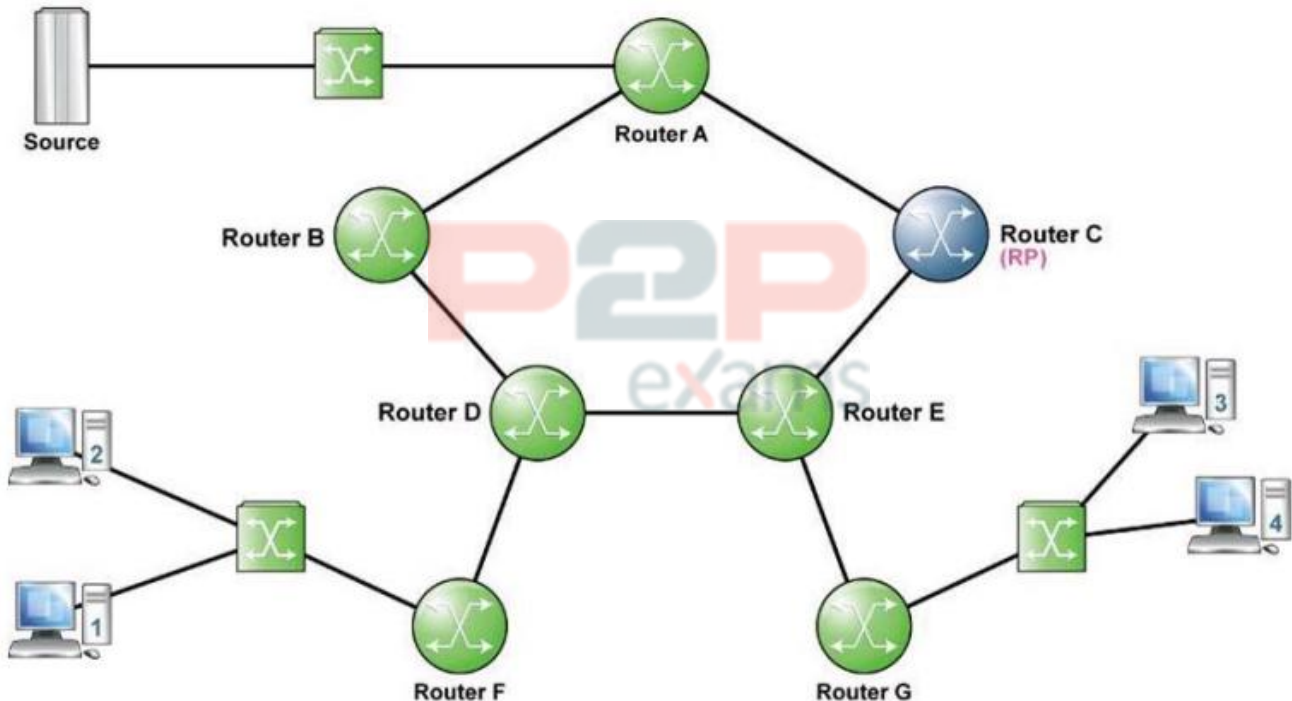
Answer:

A

## Question 3

Question Type: MultipleChoice

Refer to the following exhibit.



Assume all links have an equal metric in the IGP. Receiver 2 and Receiver 3 have joined the multicast group and the source is sending. Where will the Shared Path Tree have been created before switchover? (Choose two)

Options:

- A- Router G-E-C
- B- Router F-D-E-G
- C- Router F-D-E-C
- D- Router C-A
- E- Router F-D-B-A
- F- Router G-E-C-A
- G- No Shared Path Tree will have been created

Answer:

A, C

## Question 4

Question Type: MultipleChoice

Which of the following regarding the Source Path Tree is TRUE?

Options:

- A- The RP is the root of the tree.
- B- It is represented by a (\*, G) entry.
- C- It is the initial forwarding path in ASM mode.
- D- It can be created without the RP.

Answer:

D

## Question 5

Question Type: MultipleChoice

Refer to the configuration exhibit.

```
A:RouterA>config>router>igmp# info
-----
 ssm-translate
   grp-range 232.0.0.0 232.127.255.255
     source 192.168.1.1
   exit
   grp-range 232.128.0.0 232.255.255.255
     source 192.168.1.2
   exit
 exit
 interface "toReceiver"
 exit
-----
```

What will happen when this router receives an IGMPv3 exclude none report for group 232.1.1.1?

---

**Options:**

- A- The router will propagate a (\*, 239.1.1.1) join towards RP if it exists
- B- The router will randomly pick a source from 192.168.1.1 and 192.168.1.2 and send an (S, G)join towards the source
- C- The IGMPv3 report will be dropped and a log about misconfiguration will be generated
- D- The router will send a PIM (192.168.1.1,232.1.1.1) Join

---

**Answer:**

D

---

**Question 6**

Question Type: MultipleChoice

---

When forwarding a multicast frame, normal behavior for a LAN switch (with IGMP snooping enabled) is to forward the frame as if it were:

---

**Options:**

- A- A unicast frame with a known destination in the forwarding table.
- B- A unicast frame with an unknown destination in the forwarding table.
- C- A unicast frame with a known source in the forwarding table,
- D- A unicast frame with an unknown source in the forwarding table.

---

**Answer:**

A

---

**Question 7**

Question Type: MultipleChoice

---

Which option best is NOT a characteristic of multicast?

---

**Options:**

- A- Multicast relies on an existing IP routing infrastructure.
- B- Multicast traffic may follow a different path than unicast traffic between the same two points.

- C- A distinct multicast topology can be created instead of using the unicast topology.
- D- When PIM is used, the unicast routing topology has no impact on the multicast topology.

Answer:

D

## Question 8

Question Type: MultipleChoice

Click the exhibit.

```
*A:PE# show router bgp routes mvpn-ipv4 type spmsi-ad detail
=====
BGP MVPN-IPv4 Routes
=====
Route Type           : Spmsi-Ad
Route Dist.          : 65100:1
Originator IP        : 1.1.1.1
Source IP             : 192.168.1.2
Group IP              : 239.1.1.1
Nexthop               : 1.1.1.1
From                  : 1.1.1.1
Res. Nexthop         : 0.0.0.0
Local Pref.           : 100
Aggregator AS        : None
Atomic Aggr.         : Not Atomic
Community             : target:65100:1
Cluster              : No Cluster Members
Originator Id        : None
Flags                 : Used valid Best IGP
Route source          : Internal
AS-Path               : No AS-Path
VPRN Imported        : 1

-----
PMSI Tunnel Attribute :
Tunnel-type           : PIM-SSM Tree  Flags           : Leaf not required
MPLS Label            : 0
Root-Node              : 1.1.1.1    P-Group         : 232.10.10.0
-----
```

According to the output shown, which of the following statements is FALSE?

Options:

- A- The S-PMSI is instantiated by GRE tunnels.
- B- The I-PMSI group address is 232.10.10.0.
- C- 192.168.1.2 is the IP address of the multicast source.
- D- The customer is sending multicast traffic to group 239.1.1.1.

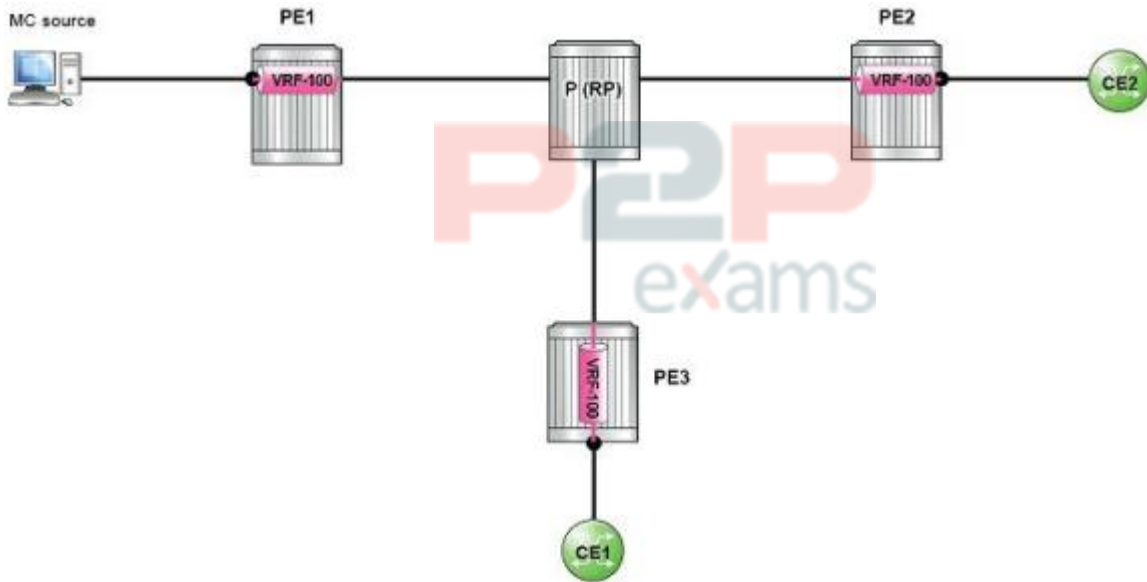
Answer:

B

## Question 9

Question Type: MultipleChoice

Click the exhibit.



Assume the I-PMSI group address is G. How many PIM (S,G) entries are on the P (RP) router?

Options:

- A- Only one, and S is PE1.
- B- Only one, and S is the MC source server's IP address.
- C- None, as ROnly maintains (\*,G) state.
- D- Three, and S is PE1, PE2 and PE3 respectively.

Answer:

D

## Question 10

Question Type: MultipleChoice

Which MAC address does the IPv4 multicast address 239.33.42.107 translate to?

**Options:**

---

- A- 01-00-5e-al-2a-6b
- B- 01-00-5e-21-2a-6b
- C- 01-00-5e-21-2c-6c
- D- The multicast group address which the router assumes its hosts might have interest in.
- E- 00-01-5e-21-2a-6b
- F- 00-01-5e-al-2a-6b

**Answer:**

---

B

**Question 11**

---

**Question Type:** MultipleChoice

---

Four routers share a multi-access network. Router A is configured with a PIM DR priority of 10, Router B is configured with a PIM DR priority of 100, Router C and Router D are Alcatel-Lucent 7750 SRs set at the default value. Router D has the highest IP address. Which router is selected as the PIM DR on this multiaccess network?

**Options:**

---

- A- Router A
- B- Router B
- C- Router C
- D- Router D

**Answer:**

---

B



To Get Premium Files for 4A0-108 Visit

<https://www.p2pexams.com/products/4a0-108>

For More Free Questions Visit

<https://www.p2pexams.com/nokia/pdf/4a0-108>

**20%**  
**DISCOUNT**

**P2P**  
exams