



Free Questions for 4A0-114 by dumpshq

Shared by Frye on 07-11-2022

For More Free Questions and Preparation Resources

Check the Links on Last Page

Question 1

Question Type: MultipleChoice

Which of the following is considered a best practice for BGP address planning?

Options:

- A- Advertising external networks into IGP.
- B- Using system addresses for setting up iBGP sessions.
- C- Exporting the networks associated with the external links of eBGP peers into BGP.
- D- Optimizing BGP route table by exporting IGP routes into BGP.

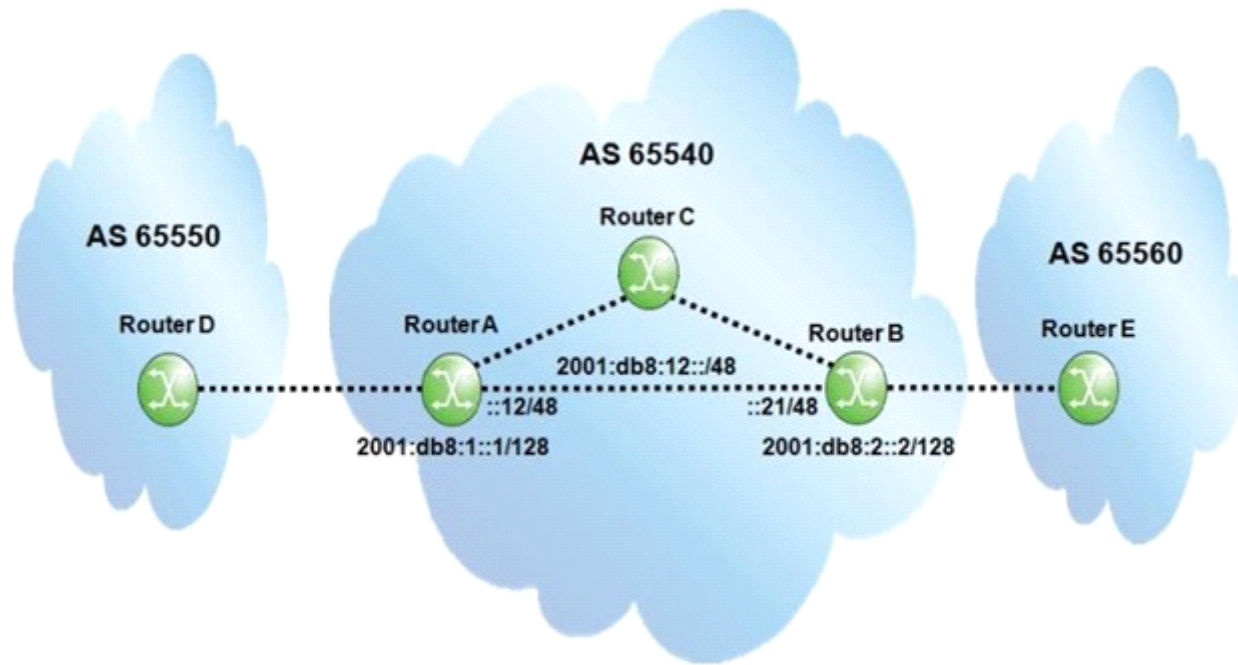
Answer:

B

Question 2

Question Type: MultipleChoice

Click the exhibit.



Assume all router-IDs are properly configured, and global IPv6 addresses are used to establish eBGP sessions. Which of the following configurations is required on router A so that router B can exchange traffic with router D?

- A.

```
group "IPv6_iBGP"  
  family ipv6  
  next-hop-self  
  peer-as 65540  
  neighbor 2001:DB8:2::2  
  exit  
exit
```
- B.

```
group "IPv6_iBGP"  
  next-hop-self  
  type internal  
  peer-as 65540  
  neighbor 2001:DB8:2::2  
  exit  
exit
```
- C.

```
group "IPv6_iBGP"  
  family ipv6  
  peer-as 65540  
  neighbor 2001:DB8:2::2  
  exit  
exit
```
- D.

```
group "IPv6_iBGP"  
  family ipv6  
  next-hop-self  
  type internal  
  neighbor 2001:DB8:2::2  
  exit  
exit
```

Options:

A- Option A

B- Option B

C- Option C

D- Option D

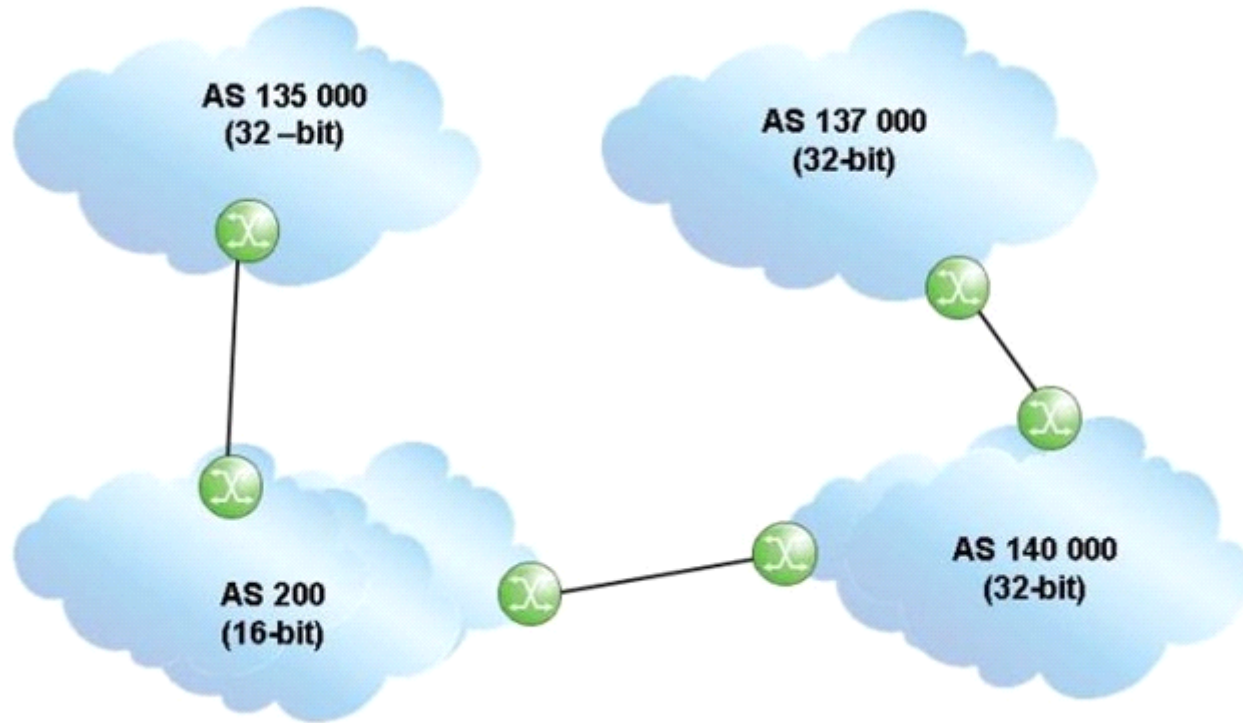
Answer:

A

Question 3

Question Type: MultipleChoice

Click the exhibit.



An update travels from AS 137000 to AS 135000, traversing both 32-bit and 16-bit AS Paths.

What AS Path is seen by AS 200?

Options:

A- 140000 137000

B- 137000 140000

C- 23456 23456

D- 200 140000 137000

Answer:

C

Question 4

Question Type: MultipleChoice

An autonomous system has 7 routers configured with BGP. How many iBGP sessions are required for a fully meshed configuration?

Options:

A- 7

B- 13

C- 21

D- 42

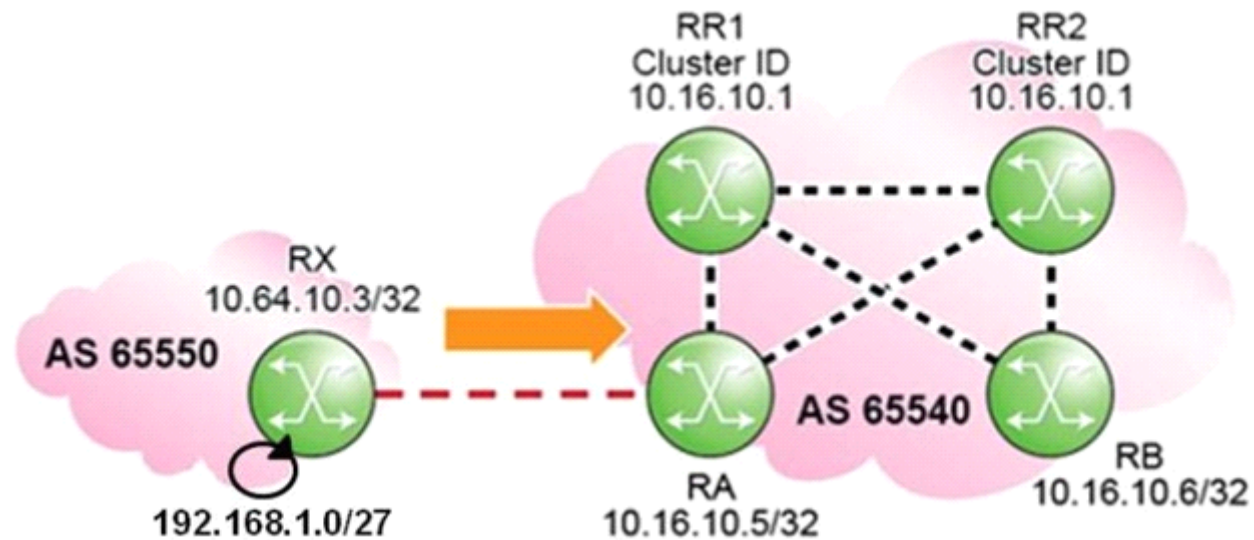
Answer:

C

Question 5

Question Type: MultipleChoice

Click the exhibit.



Routers RR1 and RR2 are route reflectors with the same Cluster-ID. How does router RA treat the updates for prefix 192.168.1.0/27 received from routers RR1 and RR2?

Options:

- A- Router RA prefers the update received from router RR1.
- B- Router RA prefers the update received from router RR2.
- C- Router RA flags both updates as invalid.
- D- Router RA accepts both updates and flags them as used.

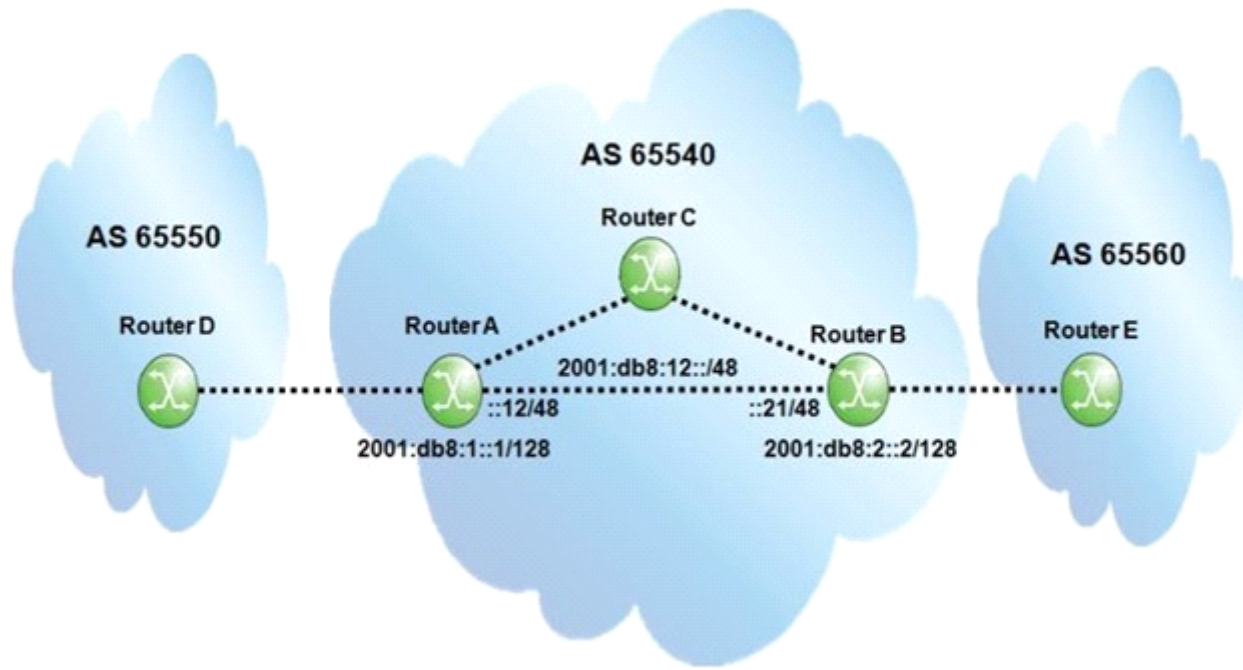
Answer:

C

Question 6

Question Type: MultipleChoice

Click the exhibit.



Assuming the network is IPv6 only, which of the following configurations on the Nokia 7750 SR router A can establish an IPv6 BGP session to router B?

- A.

```
router-id 10.10.10.1
group "IPv6_iBGP"
  family ipv6
  peer-as 65540
  neighbor 2001:DB8:2::2
  exit
exit
```
- B.

```
group "IPv6_iBGP"
  family ipv6
  type internal
  peer-as 65540
  neighbor 2001:DB8:2::2
  exit
exit
```
- C.

```
group "IPv6_iBGP"
  family ipv6
  type internal
  peer-as 65540
  neighbor 2001:DB8:12::21
  exit
exit
```
- D.

```
group "IPv6_iBGP"
  family ipv6
  type internal
  neighbor 2001:DB8:2::2
  exit
exit
```

Options:

A- Option A

B- Option B

C- Option C

D- Option D

Answer:

A

Question 7

Question Type: MultipleChoice

Which of the following statements regarding BGP shortcuts is FALSE?

Options:

A- MPLS tunnels are used to carry transit traffic across the network.

- B-** A full mesh of iBGP peering sessions is not required,
- C-** Edge and transit routers need to be configured with BGP.
- D-** The transit routers need to support LDP or RSVP-TE LSPs.

Answer:

C

To Get Premium Files for 4A0-114 Visit

<https://www.p2pexams.com/products/4a0-114>

For More Free Questions Visit

<https://www.p2pexams.com/nokia/pdf/4a0-114>

