



Free Questions for 4A0-C01 by certscare

Shared by Shepherd on 06-06-2022

For More Free Questions and Preparation Resources

Check the Links on Last Page

Question 1

Question Type: MultipleChoice

Which of the following comparisons between E-pipes and VPLSes is FALSE?

Options:

- A- They both function as a Layer 2 switch from the service provider's perspective.
- B- They both support SAP encapsulations of null, dot1Q and Q-in-Q.
- C- They both use SAPs as the demarcation point between the customer and the provider.
- D- MAC addresses are learned by VPLSes, but not by E-pipes.

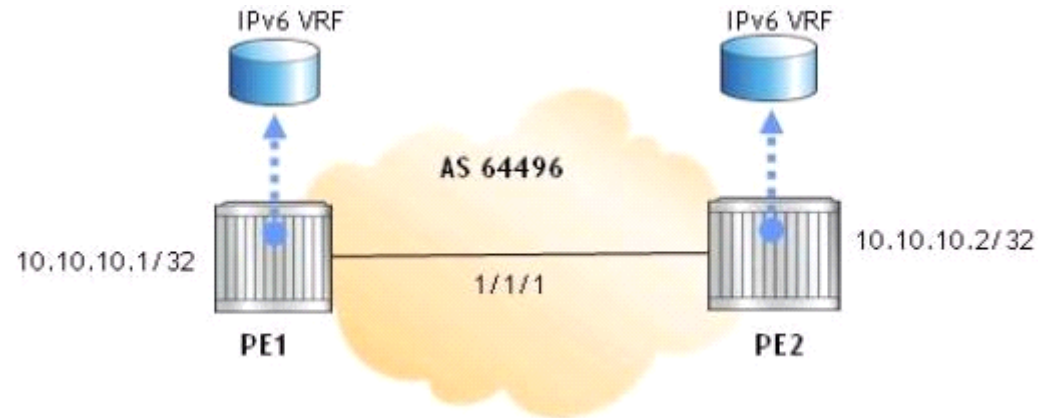
Answer:

A

Question 2

Question Type: MultipleChoice

Click the exhibit.



The two PEs are providing 6VPE and IPv4 VPRNs. The core network is IPv4/MPLS. Which of the following is the BGP family configuration for the MP-BGP on the PEs?

Options:

- A- family ipv4 ipv6
- B- family vpn-ipv4ipv6
- C- family vpn-ipv4 vpn-ipv6
- D- family ipv6 vpn-ipv6

Answer:

C

Question 3

Question Type: MultipleChoice

Which of the following about VPRNs is TRUE?

Options:

- A-** Customers must use the same routing protocol as the service provider.
- B-** Customers belonging to the same VPRN service must use the same subnet.
- C-** Service providers only need to perform configurations on the PEs to add additional VPRNs.
- D-** For each VPRN, only one customer can be connected at each PE.

Answer:

C

Question 4

Question Type: MultipleChoice

Which of the following about route distinguishes on the Alcatel-Lucent 7750 SR is TRUE?

Options:

- A-** Route distinguishes are appended to IPv4 prefixes to form IPv6 prefixes.
- B-** CE routers use a route distinguisher to indicate which VPRN they are associated to.
- C-** A route distinguisher combined with an IPv4 prefix produces a VPN-IPv4 prefix.
- D-** Route distinguishes are used to determine which routes a VPRN should import.

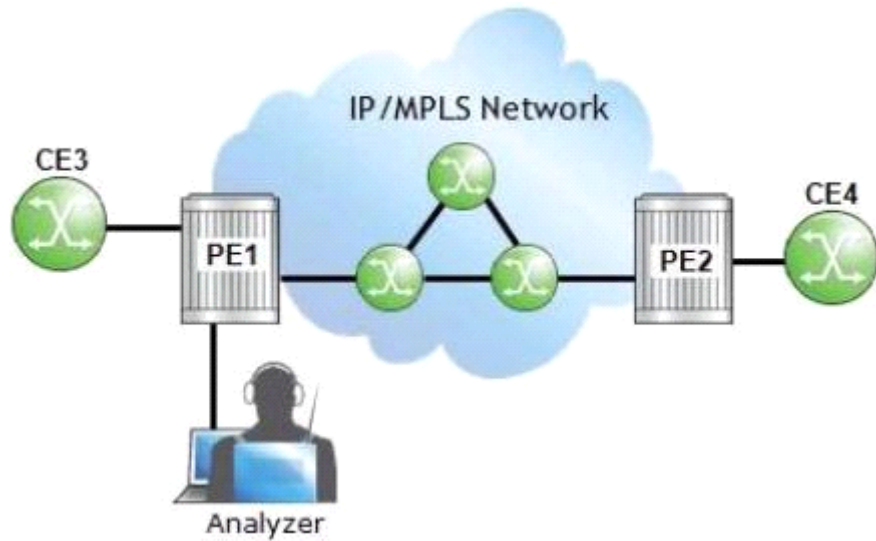
Answer:

C

Question 5

Question Type: MultipleChoice

Click the exhibit.



The operator at PE1 wants to analyze the traffic between CE4 and PE2. On an Alcatel-Lucent 7750 SR, which of the following is required as part of the configuration?

Options:

- A- Both PE1 and PE2 need a mirror source.
- B- PE2 needs a mirror source with the remote source specified.
- C- PE1 needs a mirror source with the remote source specified.
- D- Both PE1 and PE2 need a mirror destination.
- E- PE2 needs a mirror destination that specifies a SAP.

Answer:

D

Question 6

Question Type: MultipleChoice

Which of the following about the lsp-ping command on the Alcatel-Lucent 7750 SR is FALSE?

Options:

- A-** An echo request is sent based on the LSP's label stack.
- B-** Echo reply packets may not take the same path as the LSP.
- C-** The IP destination address is used to initiate echo requests,
- D-** The test fails if the LSP is not operationally up.

Answer:

C

Question 7

Question Type: MultipleChoice

A VPLS receives a frame with the single VLAN tag 35 on the Q-in-Q SAP 1/1/1:35.*. Which of the following describes default Alcatel-Lucent 7750 SR behavior?

Options:

- A- The frame is dropped.
- B- The VLAN tag is removed, and the frame is transported over the network.
- C- The VLAN tag is kept, and the frame is transported over the network.
- D- The VLAN tag is kept, a VLAN of 0 is added, and the frame is transported over the network.

Answer:

B

Question 8

Question Type: MultipleChoice

An SDP using GRE encapsulation is configured for an E-pipe service. The network port used by the SDP has an MTU of 8000. What value does the SDP path MTU have by default on an Alcatel-Lucent 7750 SR?

Options:

A- 7958

B- 7978

C- 8022

D- 8042

Answer:

A

Question 9

Question Type: MultipleChoice

On which object is ADSPEC enabled?

Options:

- A- SDP
- B- Network port
- C- LSP
- D- Service
- E- RSVP

Answer:

C

To Get Premium Files for 4A0-C01 Visit

<https://www.p2pexams.com/products/4a0-c01>

For More Free Questions Visit

<https://www.p2pexams.com/nokia/pdf/4a0-c01>

