



Free Questions for 4A0-C04 by [certsinside](#)

Shared by [Burris](#) on [29-01-2024](#)

For More Free Questions and Preparation Resources

[Check the Links on Last Page](#)

Question 1

Question Type: MultipleChoice

Which of the following regarding the withdrawal of routes from one BGP speaker to another is TRUE?

Options:

- A- An update message is used. Only a single prefix can be withdrawn at a time.
- B- An update message is used. Multiple prefixes can be withdrawn at a time.
- C- A withdraw message is used. Only a single prefix can be withdrawn at a time.
- D- A withdraw message is used. Multiple prefixes can be withdrawn at a time.

Answer:

B

Question 2

Question Type: MultipleChoice

Which of the following is TRUE if the local state of BGP is OpenConfirm?

Options:

- A- The local system has received a Keepalive message and is ready to exchange updates.
- B- The local system is exchanging Update messages with its neighbor.
- C- The local system has sent a Keepalive message to its neighbor and is waiting to receive one back.
- D- The local system has sent an Open message to its neighbor and is waiting to receive one back.

Answer:

C

Question 3

Question Type: MultipleChoice

Which of the following is NOT a BGP message type?

Options:

- A- Route-Refresh
- B- OpenSent
- C- Notification
- D- Update
- E- Keepalive

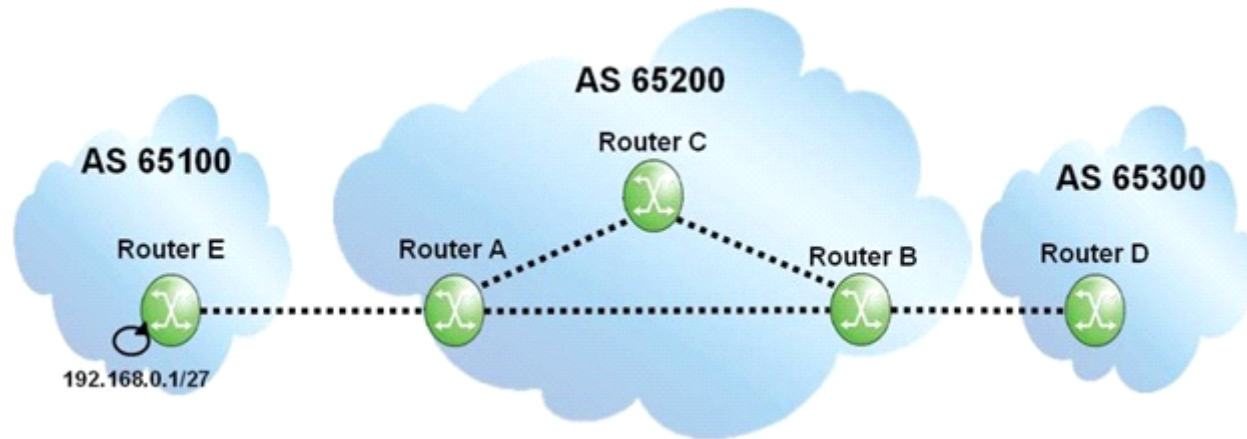
Answer:

B

Question 4

Question Type: MultipleChoice

Click the exhibit.



Assuming that none of the routers within AS 65200 is configured with next-hop-self", what will the BGP update for the 192.168.0.1/27 prefix contain when it arrives at router B?

Options:

- A- AS Path of 65200 65100, Next Hop of router A.
- B- AS Path of 65200 65100, Next Hop of router E.
- C- AS Path of 65100, Next Hop of router E.
- D- AS Path of 65100, Next Hop of router A.

Answer:

C

Question 5

Question Type: MultipleChoice

Which of the following routes is NOT considered an internal route?

Options:

- A-** A route received from a BGP peer within the same AS.
- B-** A route originated by a router in a different cluster of the same AS.
- C-** A route received from a BGP peer from a different member AS of a confederation.
- D-** A route received from a BGP peer from the same member AS of a confederation.

Answer:

C

Question 6

Question Type: MultipleChoice

Which of the following statements regarding BGP FRR is FALSE?

Options:

- A- The router must receive several BGP routes to compute a backup path.
- B- BGP FRR can be triggered by BFD.
- C- The backup path can use the same next hop as the primary path.
- D- BGP peer-tracking can be used to improve BGP FRR failure detection times.

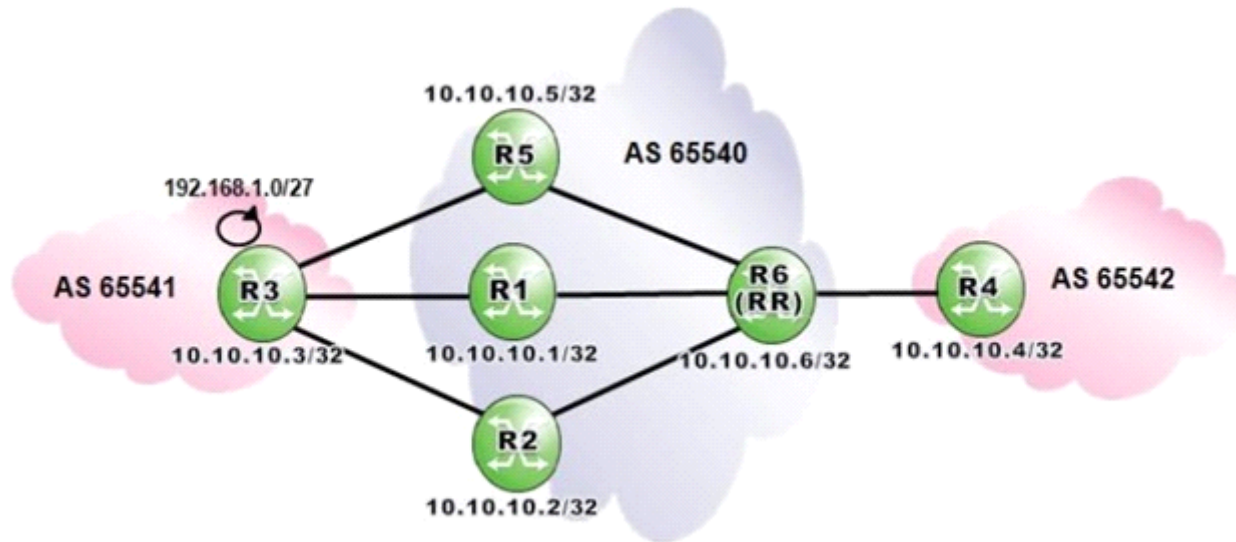
Answer:

C

Question 7

Question Type: MultipleChoice

Click the exhibit.



Router R6 is a route reflector with clients R1, R2 and R5. Router R3 advertises the prefix 192.168.1.0/27 to routers R1, R2 and R5. How many routes for prefix 192.168.1.0/27 will router R6 receive?

Options:

- A- 1
- B- 2
- C- 3
- D- None

Answer:

C

Question 8

Question Type: MultipleChoice

What is the function of the Cluster_List attribute?

Options:

- A- It is used for loop detection within the same cluster.
- B- It is used for loop detection between clusters.
- C- It is used for loop detection in a confederation.
- D- It is used to identify the route reflectors within an AS.

Answer:

B

Question 9

Question Type: MultipleChoice

Which of the following regarding BGP confederations is FALSE?

Options:

- A- The entire confederation is viewed as a single AS by an eBGP peer.
- B- Within a confederation, each member AS is considered as a stand-alone AS.
- C- Member ASs within a confederation can use route reflection.
- D- Member ASs must be fully meshed within a confederation.

Answer:

D

To Get Premium Files for 4A0-C04 Visit

<https://www.p2pexams.com/products/4a0-c04>

For More Free Questions Visit

<https://www.p2pexams.com/nokia/pdf/4a0-c04>

