



Free Questions for EX318 by vceexamstest

Shared by Carroll on 06-06-2022

For More Free Questions and Preparation Resources

Check the Links on Last Page

Question 1

Question Type: MultipleChoice

Task 12

Make a complete backup of the system without turning off the RHV system. Backup file name /

/root/rhv

Options:

A- Explanation:

```
engine-backup --scope=all --mode=backup --file=rhvm-backup.gz --  
log=backup.log
```

Answer:

A

Question 2

Question Type: MultipleChoice

Task 11

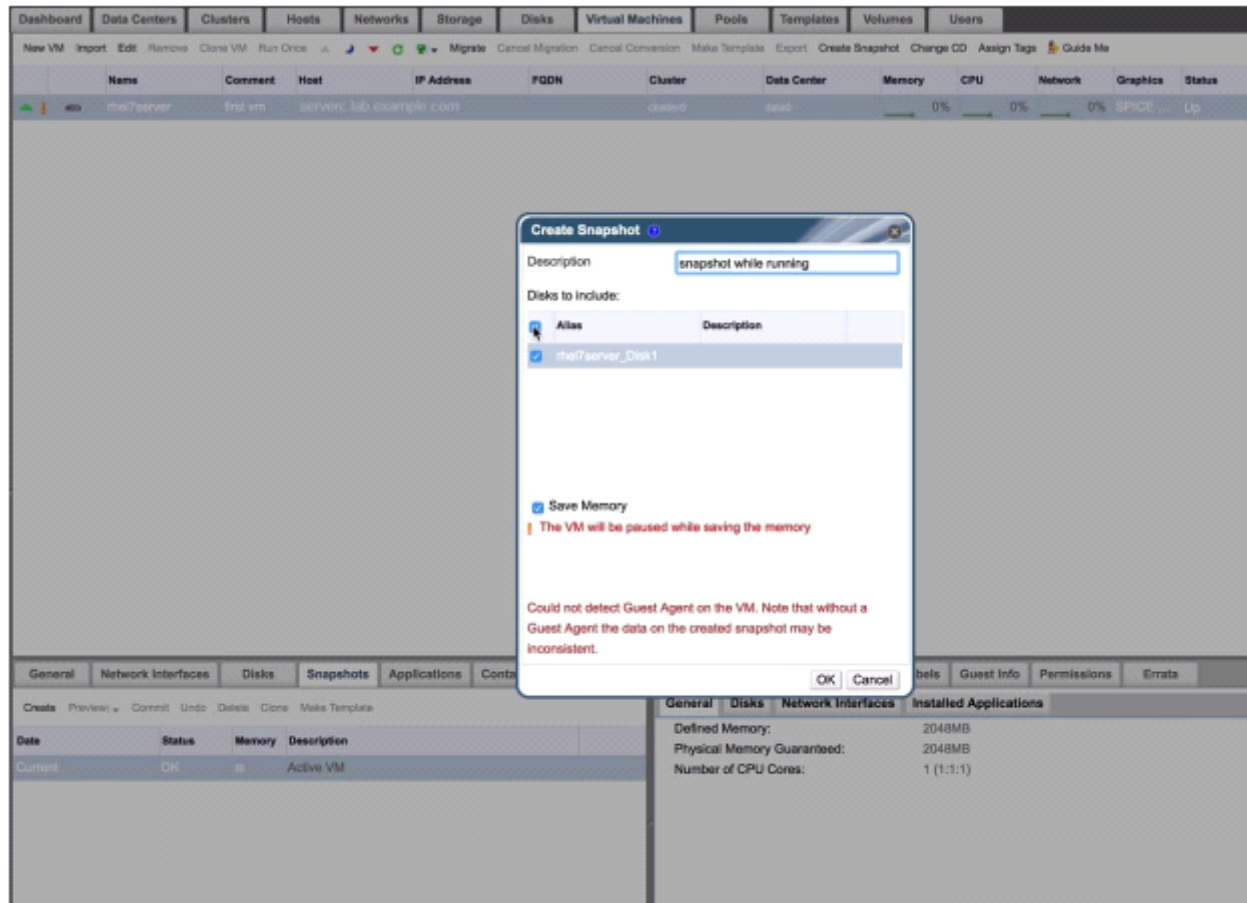
Create a snapshot of vm1 and name it snapshot-vm

Options:

A- Explanation:

Steps in Exhibits below

System -> Virtual Machines -> Snapshots -> Create



Answer:

A

Question 3

Question Type: MultipleChoice

Task 10

Create a role with next permissions: can create a datacenter, cannot delete a datacenter.

Authorize this role to the user dcmanager

Create a role with next permissions: can delete disk, cannot create disk.

Authorize this role to the user diskmanager

NOTE: The role name is arbitrary, only check the permissions.

Options:

A- Explanation:

Steps in Exhibits below

Configure -> Roles -> New

Configure

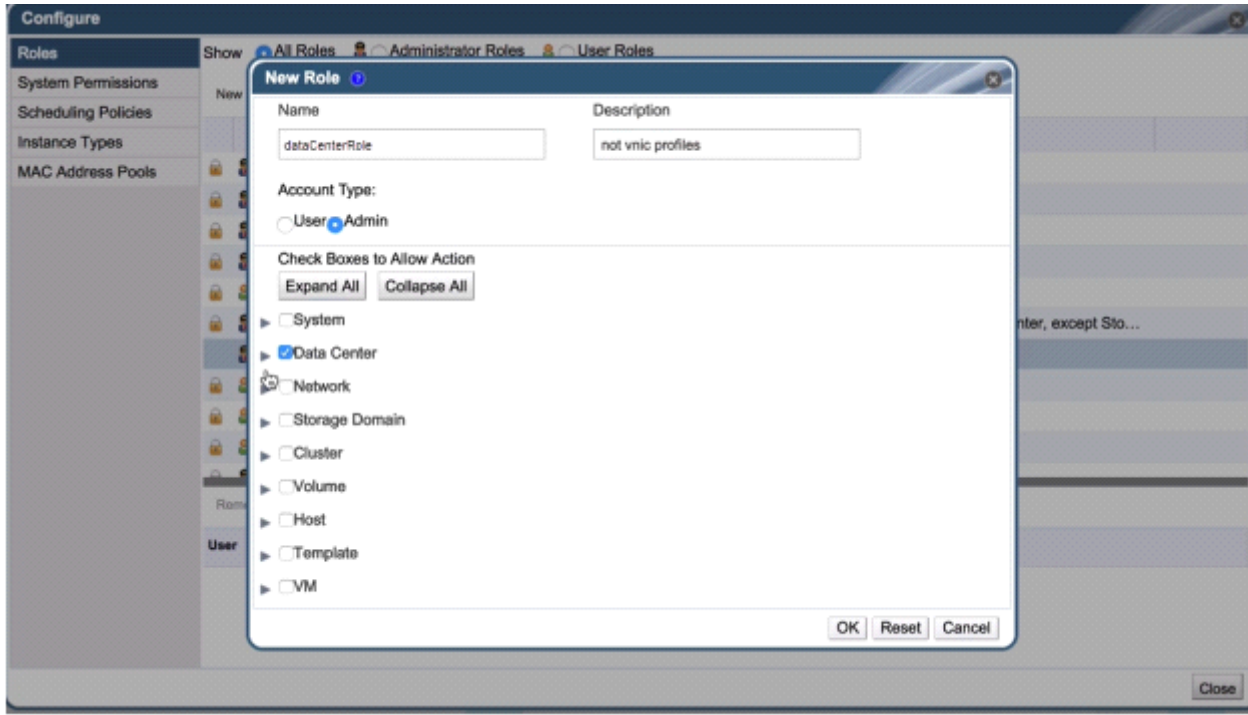
Roles **Show** All Roles Administrator Roles User Roles

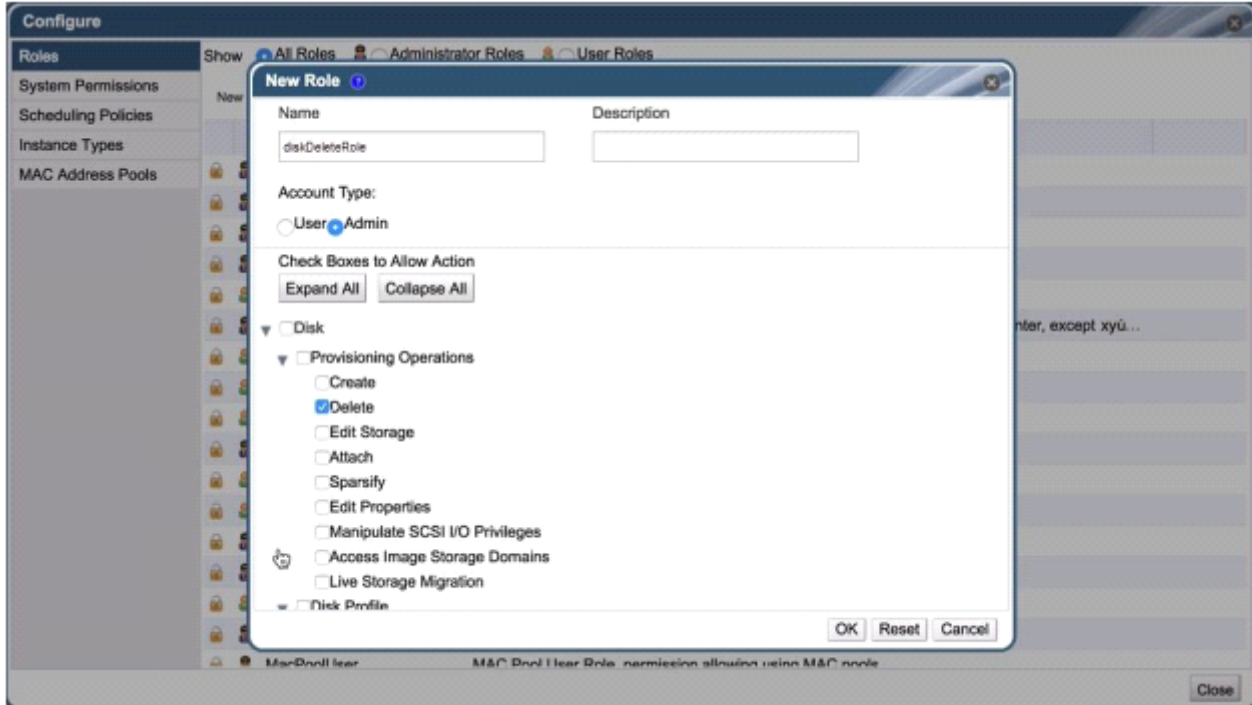
System Permissions
Scheduling Policies
Instance Types
MAC Address Pools

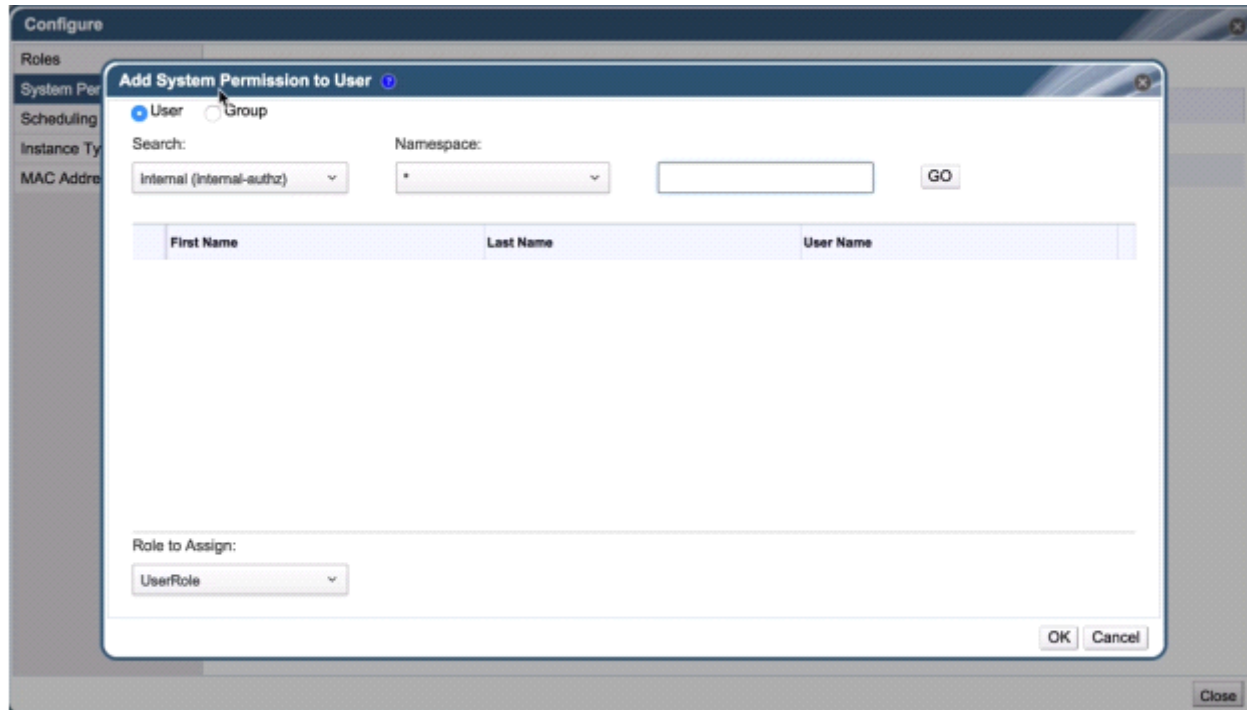
New Edit Copy Remove

Name	Description
AuditLogManager	Audit Log Manager
BookmarkManager	Bookmark Manager
ClusterAdmin	Administrator Role, permission for all the objects underneath a specific Cluster
CpuProfileCreator	Cpu Profile Creation/Deletion/Updating and Operation
CpuProfileOperator	Cpu Profile Operation
DataCenterAdmin	Administrator Role, permission for all the objects underneath a specific Data Center, except Sto...
DiskCreator	User Role, permission to create Disks
DiskOperator	User Role, permissions for all operations on a specific disk
DiskProfileUser	Disk Profile User
EventNotificationManager	Event Notification Manager
ExternalEventsCreator	External Events Creator
ExternalTasksCreator	External Tasks Creator
GlusterAdmin	Administrator Role, permissions for operations on Gluster objects
HostAdmin	Administrator Role, permission for all operations on a specific Host
InstanceCreator	User Role, permission to create Instances
MacPoolAdmin	MAC Pool Administrator Role, permission for manipulation with MAC pools
MacProfileUser	MAC Profile User Role, permission for manipulation with MAC profiles

Close







Answer:

A

Question 4

Question Type: MultipleChoice

Task 9

Configure the IPA of the external authentication server, which requires:

- 1) External server utility.lab.example.com for IPA
- 3) External domain lab.example.com
- 4) Administrator login: admin password: redhat

Options:

A- Explanation:

```
#In utility configure IDM service
#lab manage-ipa setup
ssh root@rhvm
yum install -y ovirt-engine-extension-aaa-ldap-setup
ovirt-engine-extension-aaa-ldap-setup
#ldap server
utility.lab.example.com
#CA certificate
https://utility.lab.example.com/ipa/config/ca.crt
#Search for users DN
uid=rhvadmin,cn=users,cn=accounts,dc=lab,dc=example,dc=com
systemctl restart ovirt-engine
```

Answer:

A

Question 5

Question Type: MultipleChoice

Task 8

Create a virtual machine with the template Materll

Options:

A- Explanation:

Use cloud-init technology

Set hostname to "oyser"

Authentication: set the user to admin and the password to atenorth

Network interface is set to eth0, the IP is 172.24.10.98 and the subnet mask is 255.255.255.0, gateway 172.24.10.254

(You must connect into the virtual machine to confirm, if it doesn't work, manually modify the IP information inside)

Custom Script to the text content in a link

Answer:

A

Question 6

Question Type: MultipleChoice

Task 7

Create a template with the name "MaterII" based on this virtual machine

The template Instance type option is "tiny"

Operating system option is "rhel7"

Optimized for option is "server"

Options:

A- Explanation:

#Mirror image

wget http://content.example.com/rhv4.1/x86_64/dvd/rhel-imex-lab.raw
#Note: pass tls upload the image, it must be loaded locally CA certificate
firefox http://rhvm.lab.example.com/ovirt-engine/services/pki-resource?resource=ca-certificate&format=X509-PEM-CA

Answer:

A

Question 7

Question Type: MultipleChoice

Task 6

Use iso image and kickstart to create a virtual machine with the name "vm1"

Upload iso, parameters: 8G, 512M ram, CPU type dual-core

There is a ks file, in properties also need to modify the mac address. Graphical operation

Options:

A- Explanation:

```
ssh root@rhvm
```

```
wget http://content.example.com/rhel7.3/x86_64/isos/rhel-server-7.3-x86_64-dvd.iso
```

```
engine-iso-uploader list
```

```
engine-iso-uploader -i iso upload ~/rhel-server-7.3-x86_64-dvd.iso
```

```
# During installation, specify KS
```

```
inst.ks=http://materials.example.com/small.cfg
```

Answer:

A

Question 8

Question Type: MultipleChoice

Task 5

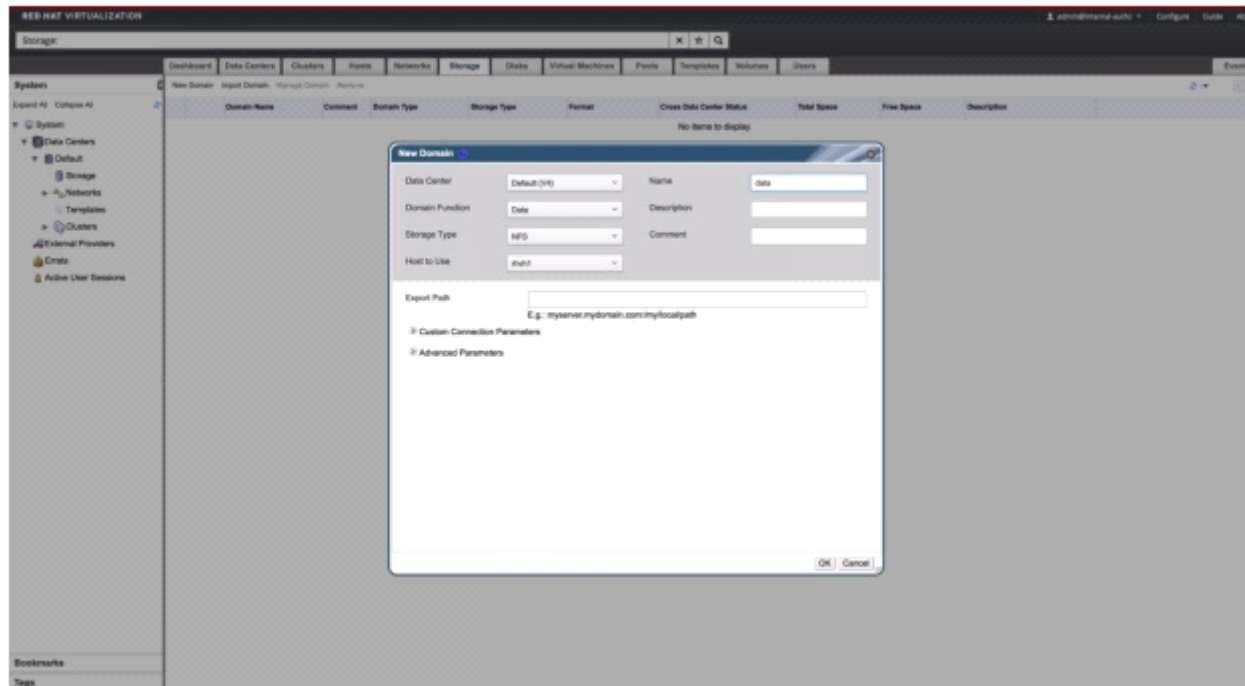
Mount three storage domains (from Task 2) Note: The nfs-server service may not be started

Options:

A- Explanation:

Steps in Exhibits below

System -> Storage -> New Domain



Answer:

A

Question 9

Question Type: MultipleChoice

Task 4

Add RHVH hosts "servera.lab.example.com" and "serverc.lab.example.com" into cluster

"cluster0"



Options:

A- Explanation:

Steps in Exhibits below




There are still unconfigured entities:

 **Configure Host** 

 Select Hosts

 Configure Storage

 Attach Storage

Optional actions:

+ Add another Cluster

+ Configure ISO Library

+ Attach ISO Library

Configure Later

New Host

General

Power Management

SPM

Console

Network Provider

Kernel

Affinity Labels

Host Cluster: cluster0
Data Center: data0

Use Foreman/Satellite

Name: servera.lab.example.com

Comment:

Address:

SSH Port: 22

Authentication

User Name: root

Password

SSH Public Key

OK Cancel

New Host

General

Host Cluster: cluster0
Data Center: data0

Use Foreman/Satellite

Name: serverc.lab.example.com

Comment:

Address:

SSH Port: 22

Authentication

User Name: root

Password

SSH Public Key

Advanced Parameters

OK Cancel

Answer:

A

Question 10

Question Type: MultipleChoice

Task 3

Create a data center named "data0" with shared storage

Create a cluster named "cluster0" with a CPU architecture of x86_64 and a CPU type of xxx

Options:

A- Explanation:

System -> Data Centers -> New

Name: data0

DataCenter:

x * Q

Dashboard Data Centers Clusters Hosts Networks Storage Disks Virtual Machines Pools Templates Volumes Users Events

System

New Edit Remove Force Remove Guide Me

1-4

- Expand All Collapse All
- System
 - Data Centers
 - Default
 - Storage
 - Networks
 - Templates
 - Clusters
 - External Providers
 - Encls
 - Active User Sessions

Name	Comment	Storage Type	Status	Compatibility Version	Description
Default	Default	Shared	Up	4.1	The default data center

New Data Center

Name:

Description:

Storage Type:

Compatibility Version:

Quota Mode:

Comment:

Storage Logical Networks GlFS Clusters Permissions Rad Hat Documentation Events

Attach Data Attach ISO Attach Export Detach Activate Maintenance

	Domain Name	Domain Type	Status	Free Space	Used Space	Total Space	Description
▲	data	Data (Master)	Active	270 GB	20 GB	290 GB	main data domain
▲	export	Export	Active	270 GB	20 GB	290 GB	main export domain
▲	ISO	ISO	Active	270 GB	20 GB	290 GB	main ISO domain

Bookmarks


Tags




Data Center - Guide Me ?



There are still unconfigured entities:

 **Configure Cluster**

 **Configure Host**

 **Configure Storage**

 **Attach Storage**

Optional actions:

+ Configure ISO Library

+ Attach ISO Library

Configure Later

New Cluster ?

General

Optimization

Migration Policy

Scheduling Policy

Console

Fencing Policy

MAC Address Pool

Data Center

data0

Name

cluster0

Description

Comment

Management Network

ovirtmgmt

CPU Architecture

x86-64

CPU Type

Dual Core

Compatibility Version

4.1

Switch type

Linux Bridge

Enable Virt Service

Enable Gluster Service

Enable to set VM maintenance reason

OK

Cancel

Answer:

A

To Get Premium Files for EX318 Visit

<https://www.p2pexams.com/products/ex318>

For More Free Questions Visit

<https://www.p2pexams.com/redhat/pdf/ex318>

