



Free Questions for UiPath-ARDv1

Shared by Kelley on 22-07-2024

For More Free Questions and Preparation Resources

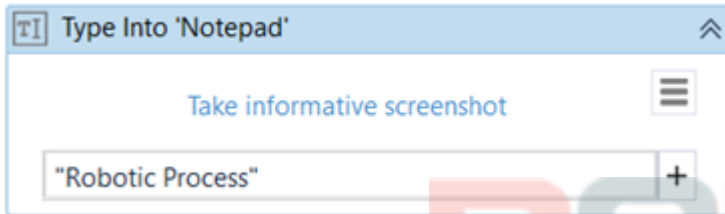
[Check the Links on Last Page](#)



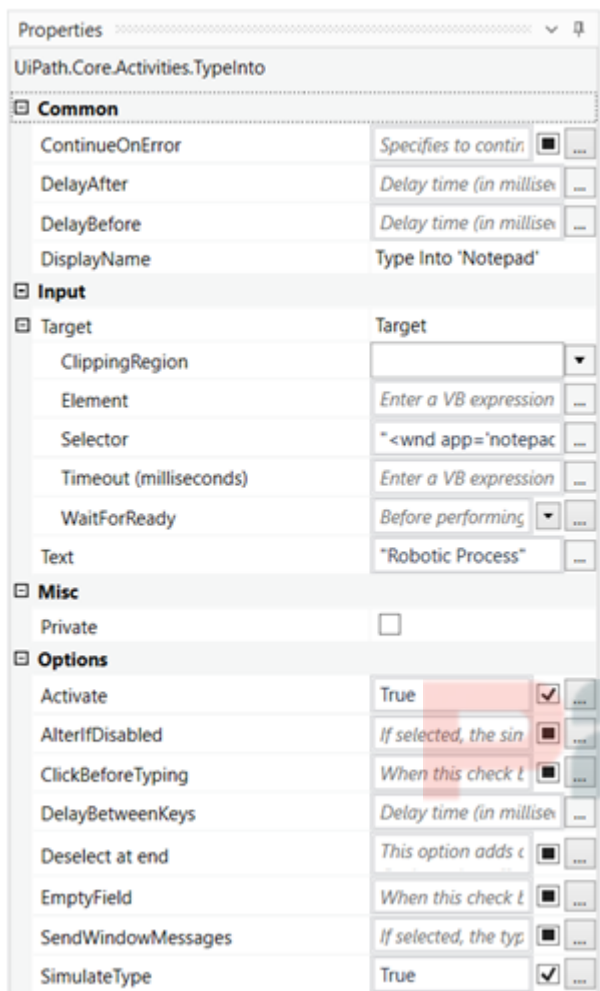
# Question 1

Question Type: MultipleChoice

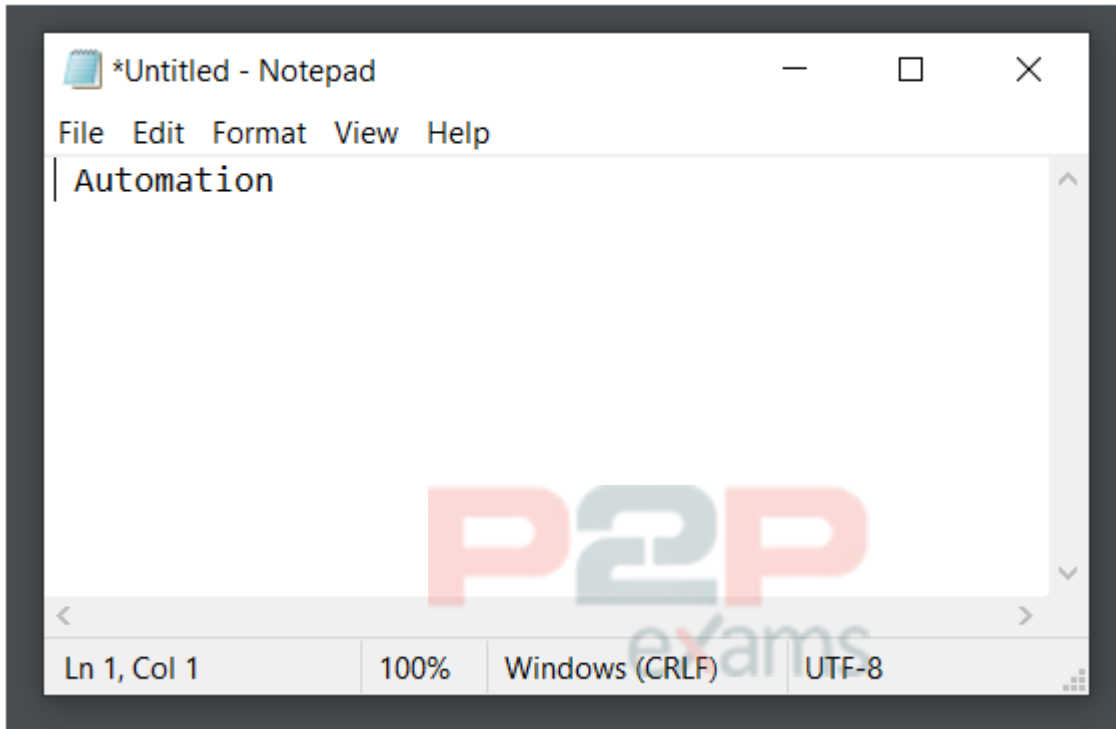
A developer executes the following Type Into activity to enter some text into a Notepad. What will be written in the Notepad once the activity is executed?



Please find below the properties of the Type Into activity



Please find below the running Notepad



### Options:

- A- Robotic Automation Process
- B- 'RoboticProcess Automation'
- C- Automation Robotic Process
- D- Robotic Process

### Answer:

D

### Explanation:

When the Empty Field check box is selected, all previously-existing content in the UI element is erased before writing your text. In this case, the Empty Field is not checked, however, the Simulate Type property is set to True.

When using Simulate Type, the field is automatically emptied, even if the Empty Field is set to False.

Capability Method	Compatibility	Background Execution	Speed	Hotkey Support	Auto Empty Field
Default	100%	no	50%	yes	no
SendMessage	80%	yes	50%	yes	no
Simulate Type/Click	99% - web apps 60% - desktop apps	yes	100%	no	yes

## Question 2

Question Type: MultipleChoice

The following reflects a subset of process steps from the Process Definition Document (PDD):

- 1) Read the unread emails from the Robot mailbox and mark them as read.
- 2) If the email has an attachment of type PNG, download the attachment.
- 3) Else, send a reply to the sender with the message "Invalid Attachment, please attach a .PNG file to process".

If you are designing a process based on the PDD steps, what is the correct exception type for Step 3?

Options:

- A- UiPath.Core.BusinessRuleException
- B- System.ArgumentException
- C- UiPath.Core.InvalidImageException
- D- System.Exception

Answer:

B

## Question 3

Question Type: MultipleChoice

What are the differences between partial selectors and full selectors?

Options:

- A- Partial selectors are recommended when switching between multiple windows. Full selectors do not include information about the top-level window.
- B- Partial selectors do not include information about the top-level window. Full selectors are recommended to perform multiple actions in the same window.
- C- Partial selectors are recommended to perform multiple actions in the same window. Full selectors include information about the top-level window.

D- Partial selectors include information about the top-level window.  
Full selectors are recommended to perform multiple actions in the same window.

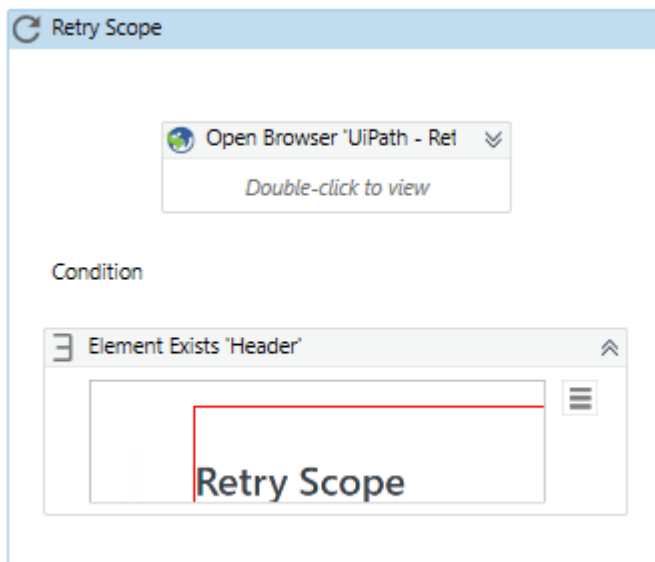
Answer:

B

## Question 4

Question Type: MultipleChoice

A developer uses Open Browser activity to launch UiPath Docs website. However, as the internet connection is unstable, the developer wraps it in a Retry Scope activity. Please choose the correct statement about this solution.



Please find the properties of Retry Scope activity below

The screenshot shows the Properties window for the **UiPath.Core.Activities.RetryScope** activity. The window is divided into three sections: **Common**, **Misc**, and **Options**. In the **Common** section, the **ContinueOnError** property is set to *Specifies to continue* with a checkbox that is currently unchecked. The **DisplayName** is set to **Retry Scope**. In the **Misc** section, the **Private** checkbox is unchecked. In the **Options** section, the **NumberOfRetries** is set to **3** and the **RetryInterval** is set to **00:00:07**. Both the **NumberOfRetries** and **RetryInterval** properties have a three-dot menu icon to their right.

Please find the properties of Open Browser activity below

The screenshot shows the Properties window for the **UiPath.Core.Activities.OpenBrowser** activity. The window is divided into three sections: **Common**, **Input**, and **Misc**. In the **Common** section, the **ContinueOnError** property is set to **True** with a checked checkbox. The **DisplayName** is set to **Open Browser 'UiPath - Re**. In the **Input** section, the **BrowserType** is set to **BrowserType.Chrc** and the **Url** is set to **"https://docs.uipath.c**. Both the **BrowserType** and **Url** properties have a three-dot menu icon to their right. In the **Misc** section, the **Private** checkbox is unchecked.

Options:

- A- If the Element Exists activity returns False after all retries, an error will be thrown.
- B- If the Element Exists activity returns False after all retries, the robot will continue the execution and no error will be thrown.
- C- Each time the Browser is not opened, an error will be thrown.
- D- With these settings, the robot will try to execute the Open Browser activity 4 times overall.

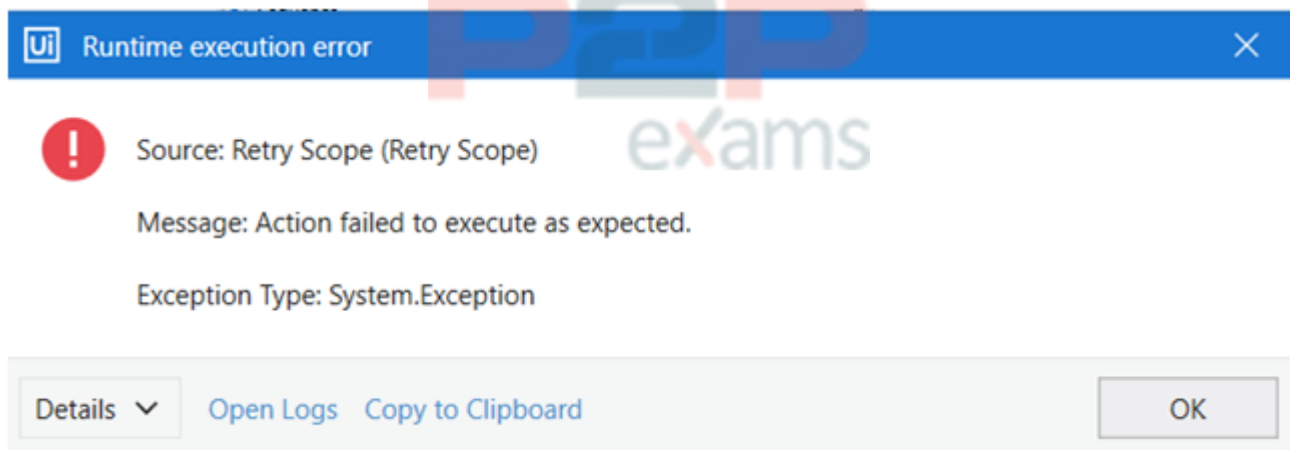
Answer:

A

### Explanation:

NumberOfRetries property indicates how many times the activity will be executed overall. It is often misunderstood as 1 try + 3 retries (like in Orchestrator queues), however, it actually is simply 3 tries.

Even if Open Browser activity has ContinueOnError property set to True, it doesn't affect the Retry Scope, because Retry Scope activity has ContinueOnError set to False. So after 3 tries, if the required element still doesn't exist, the Retry Scope activity will throw an error.



## Question 5

Question Type: MultipleChoice

Which activity is used to call another piece of automation?

Options are :

### Options:

- A- Open Application
- B- Invoke Workflow File
- C- Flowchart

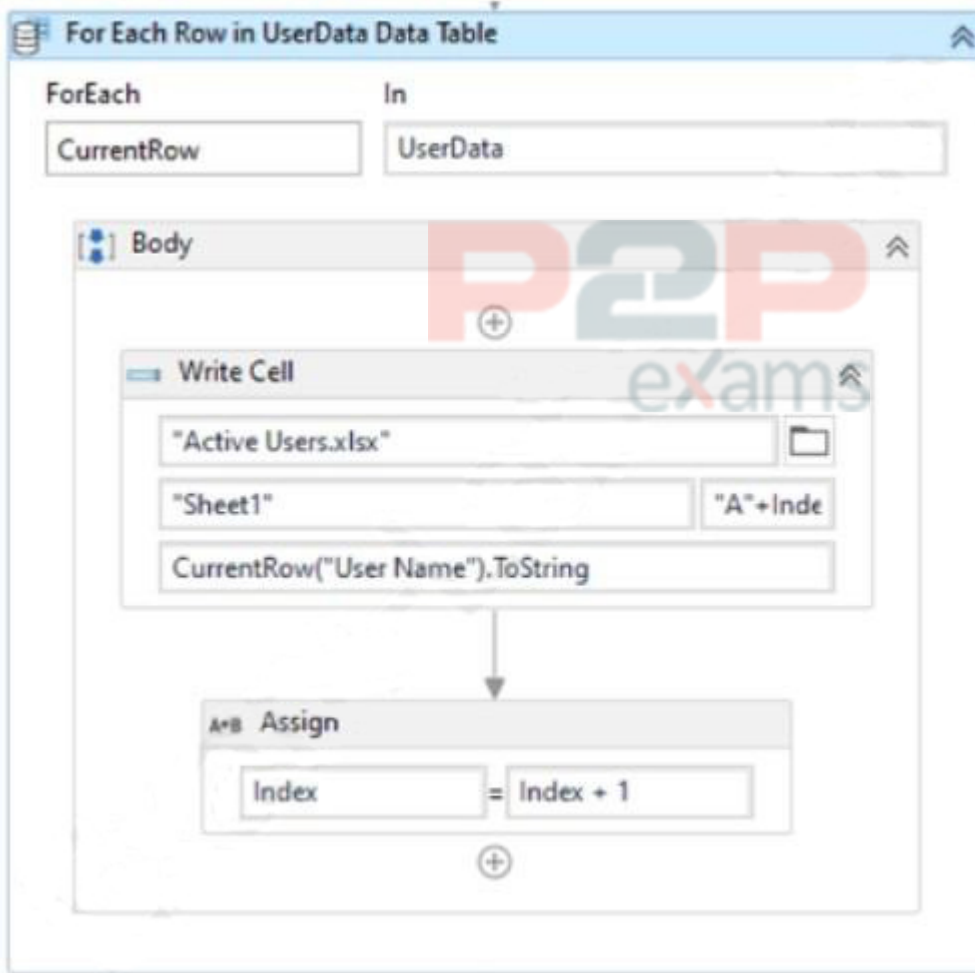
### Answer:

B

## Question 6

Question Type: MultipleChoice

A developer has created the following sequence:



The Write Cell activity has the following properties:

P2P  
exams



UiPath.Excel.Activities.WriteCell

**Common**

DisplayName Write Cell

**Destination**

Cell "A"+Index.ToString

SheetName "Sheet1"

**Input**

Text CurrentRow("User Name").ToString

Workbook path "Active Users.xlsx"

**Misc**

Private ☐

**Options**

Password The password of the workbook, if necess

What is the behavior of the sequence once executed?

Options:

- A- Writes the values in the same row in the Active Users.xlsx Excel file
- B- Writes the values in subsequent rows in the UserName datatable
- C- Writes the values in subsequent rows in the Active Users.xlsx Excel file
- D- Writes the values in the same row in the UserName datatable

Answer:

C

To Get Premium Files for UiPath-ARDv1 Visit

<https://www.p2pexams.com/products/uipath-ardv1>

For More Free Questions Visit

<https://www.p2pexams.com/uipath/pdf/uipath-ardv1>

**20%**  
**DISCOUNT**

**P2P**  
exams