



Free Questions for AD01 by vceexamstest

Shared by Santana on 06-06-2022

For More Free Questions and Preparation Resources

Check the Links on Last Page

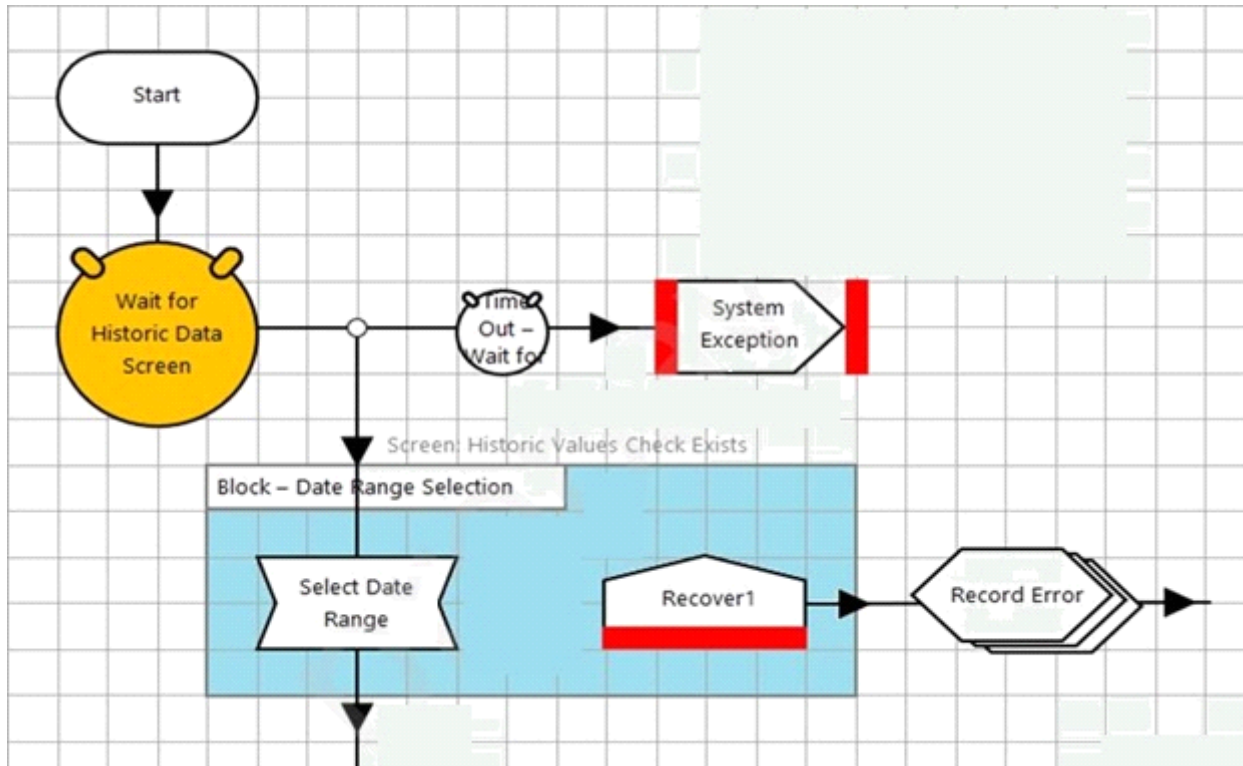
Question 1

Question Type: MultipleChoice

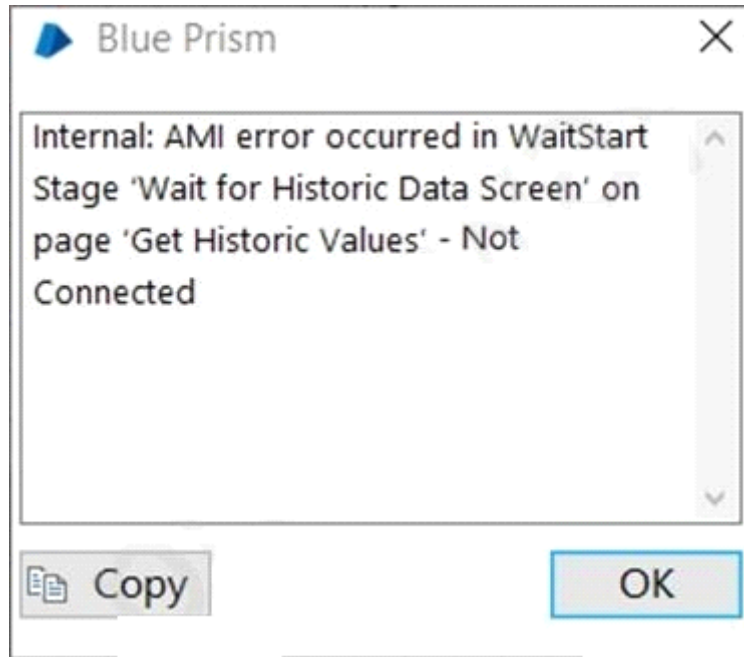
The Stock Value Calculator application has been launched successfully by a Business Object named 'Stock Value Calculator -- Basic Actions'.

A second Business Object named 'Stock Value Calculator - Historic Values' is used to interface with the Historic Values screen within the application.

The Wait stage highlighted below has encountered an Internal Exception:



Details of the Exception are provided below:



What action is required to present this error occurring?

Options:

- A-** The Business Object 'Stock Value Calculator - Historic Values' needs to be attached to the Stock Value Calculator application
- B-** The Business Object 'Stock Value Calculator - Historic Values' must relaunch the Stock Value Calculator application
- C-** The Business Object 'Stock Value Calculator - Basic Actions' needs to be attached to the Stock Value Calculator application
- D-** The Business Object 'Stock Value Calculator - Historic Values' needs to activate the Stock Value Calculator application

E- The Business Object 'Stock Value Calculator - Basic Actions' needs to activate the Stock Value Calculator application

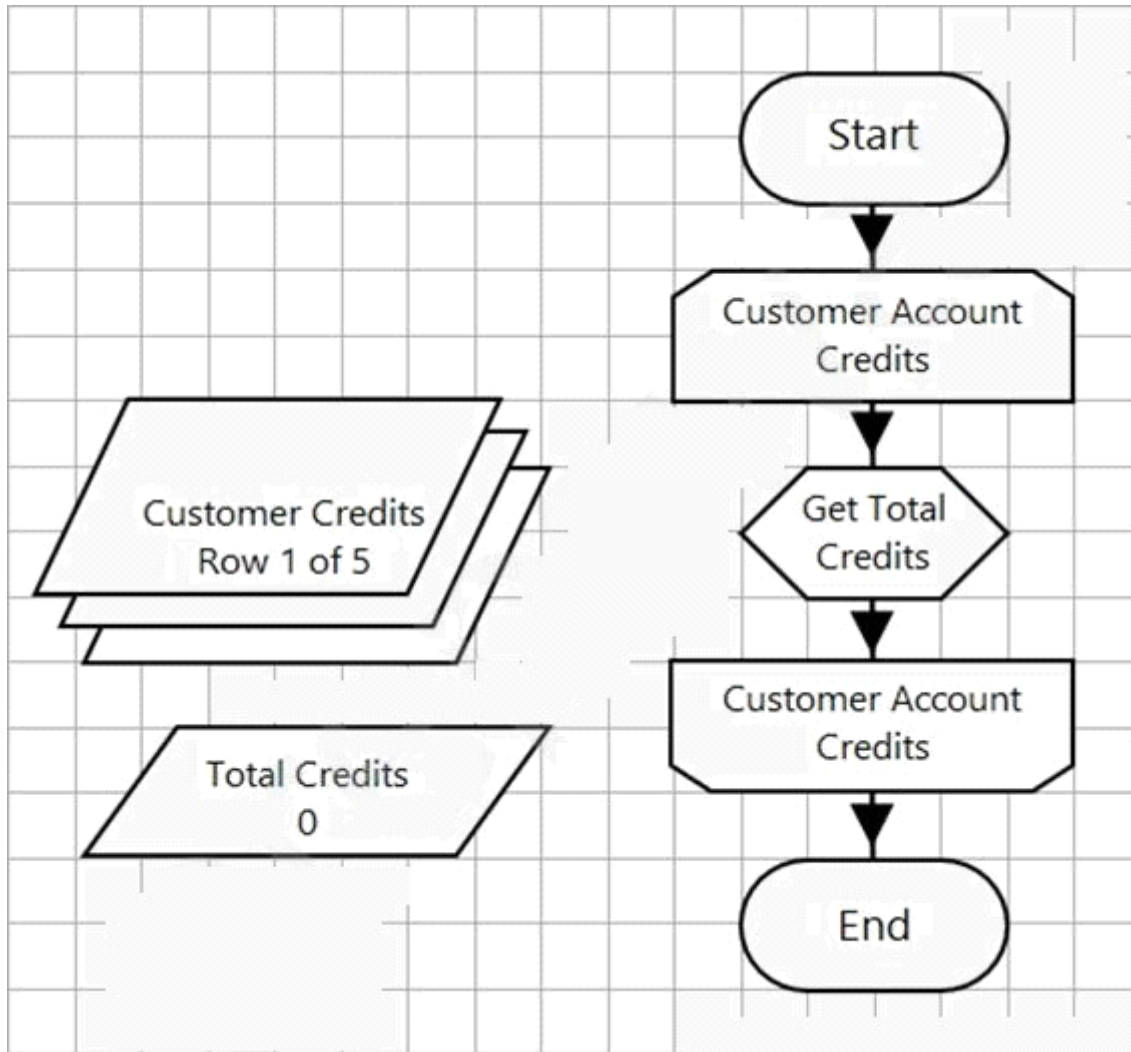
Answer:

D

Question 2

Question Type: MultipleChoice

Examine the following Process flow:




The 'Customer Credits' Collection contains the following data:

Fields	Initial Values	Current Values
Date (DateTime)		Credit Amount (Number)
23/01/2020 10:00:05		10
25/01/2020 13:45:12		15
26/01/2020 15:05:02		3
27/02/2020 16:02:45		1
29/02/2020 11:02:12		2

The 'Customer Account Credits' loop is configured to loop through the 'Customer Credits' Collection.

The 'Total Credits' data item is configured as a number data item with an initial value of 0.

The 'Get Total Credits' Calculation stage contains the following expression:

 Calculation Properties

Name:

Description:

Expression

Total Credits

What will the Total Credit data item value be after the page has executed?

Options:

A- An Internal Exception: 'Loop stage name mismatch' will be thrown

B- 10

C- 31

D- 2

Answer:

A

Question 3

Question Type: MultipleChoice

How would you run a Blue Prism Process on a virtual Digital Worker?

Options:

- A- Through Control Room
- B- Through the Digital Worker Management Console
- C- Through System Manager
- D- Through Process Studio
- E- Through Object Studio

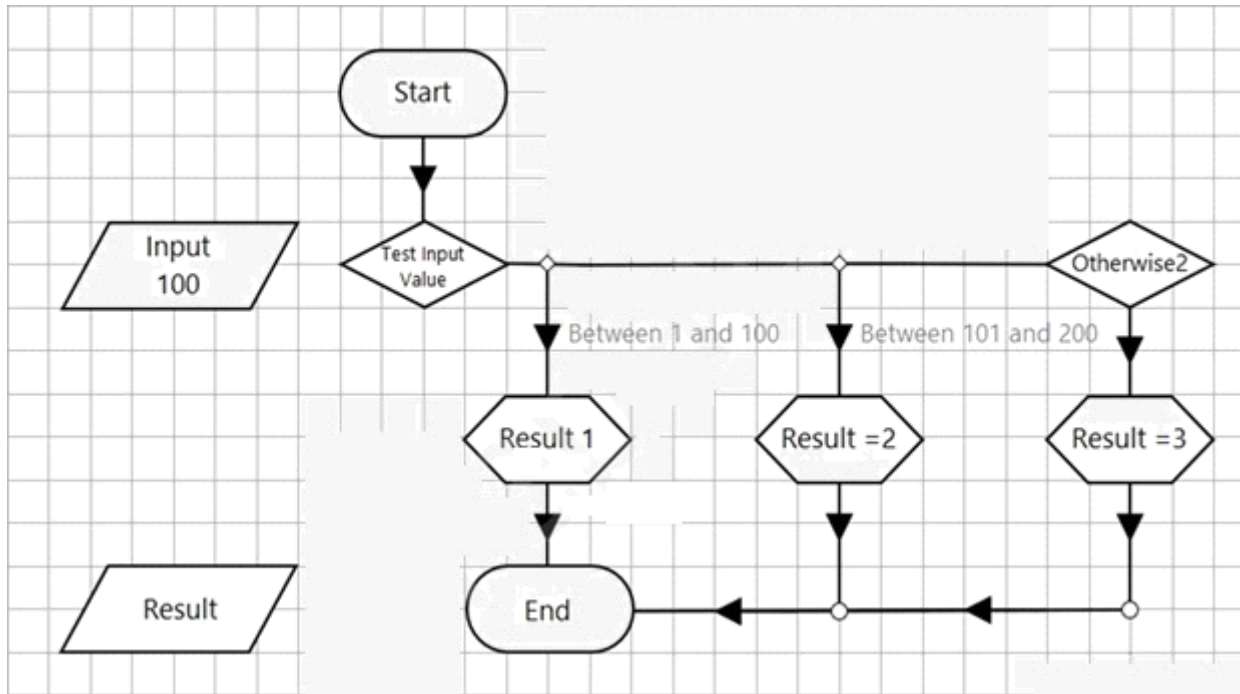
Answer:

D

Question 4

Question Type: MultipleChoice

Study the following Process flow:



The Process flow is intended to test the value of the Input data item to determine if it falls within a range of numbers, and then assign a value as an output. The number ranges are defined as between 1 to 100, between 101 to 200, and anything outside these ranges.

The Calculation stages will set the value of the Result data item to 1, 2 or 3.

To enable the Process flow to work correctly, what is the correct expression for the Choice stage branch named 'Between 1 and 100'?

Options:

A- [Input] >= 1 AND [Input] <= 100

B- [Input] >= 1 AND <= 100

C- [Input] >= '1' AND [Input] <= '100'

D- [Input] >= 1 [Input] < 100

E- [Input] BETWEEN 1 AND 100

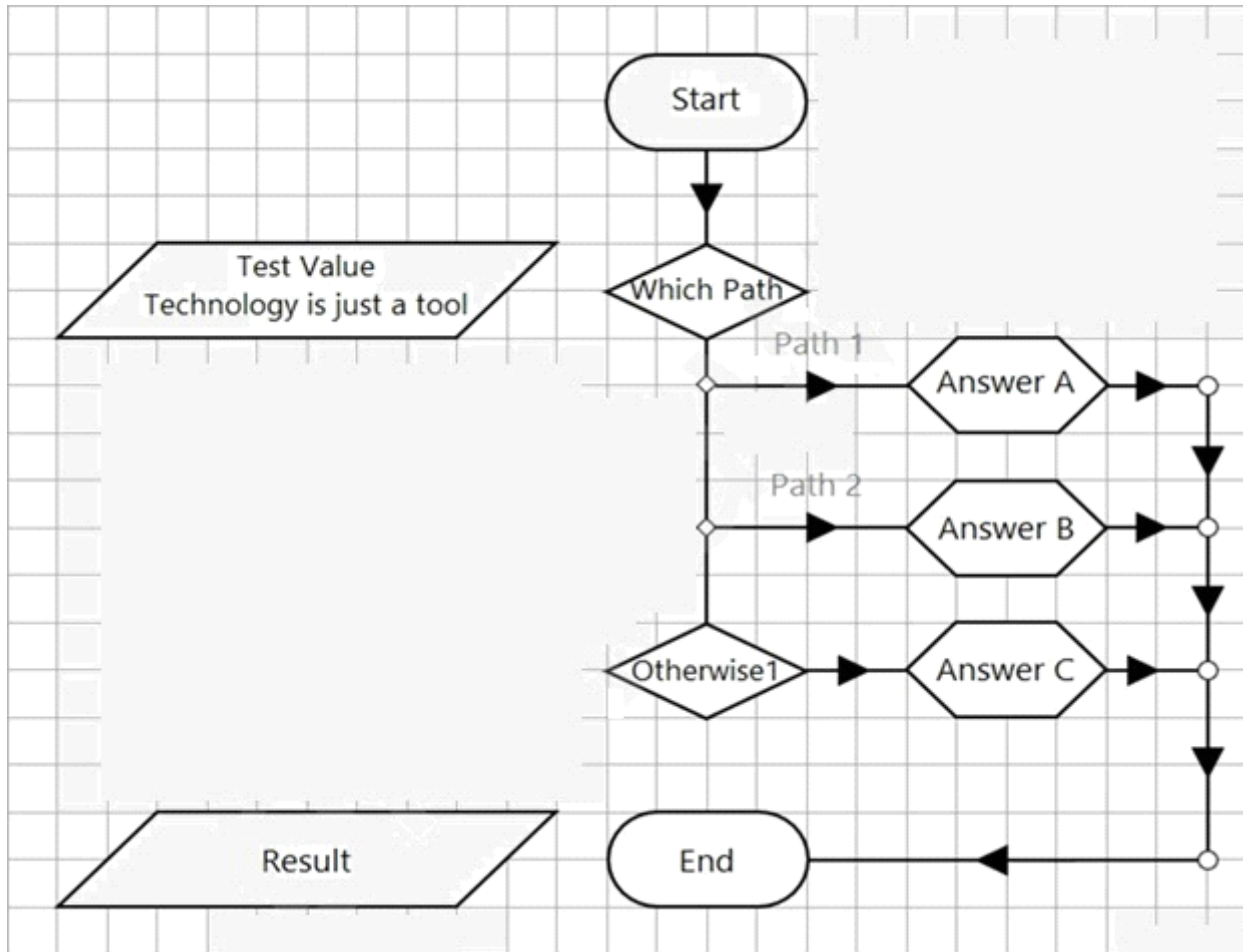
Answer:

B

Question 5

Question Type: MultipleChoice

Examine the following Page of a Blue Prism Process:




The expressions of each of the Calculation stages are provided below:

 Choice Properties

Name: Which Path

Description:

Choice Name	Choice Criterion
Path 1	StartsWith(Test Value, "Technology")
Path 2	Right([Test Value],5) = "tool!"

 Calculation Properties


Name:

Description:

Expression

A

Result

 Calculation Properties


Name:

Description:

Expression

B

Result

 Calculation Properties

Name:

Description:

Expression

C

What will the value of the Result Data Item be after the page has run?

Options:

- A- Result Data Item value will equal A
- B- An Internal Exception will be thrown
- C- Result Data Item value will equal C
- D- Result Data Item value will equal B

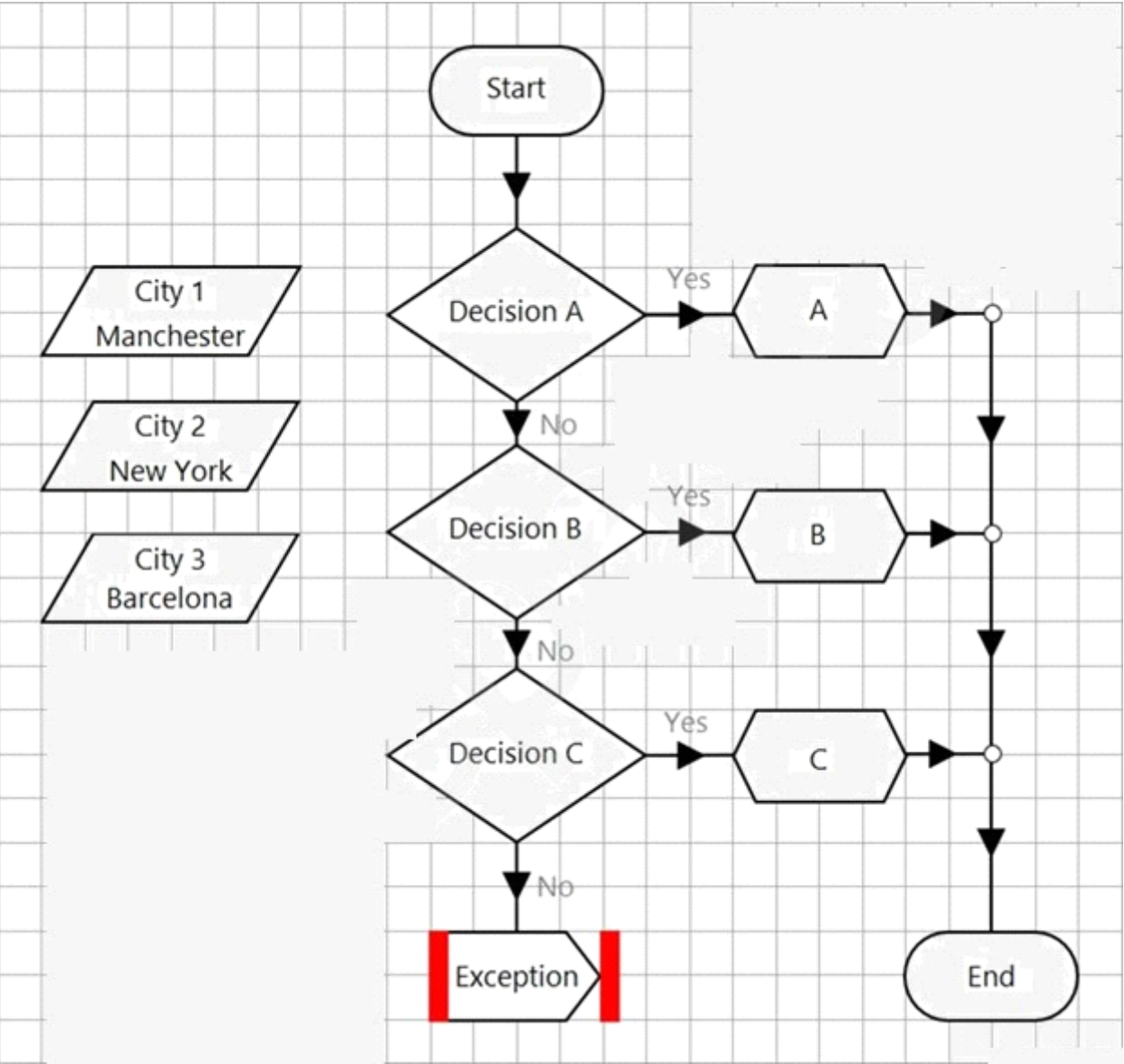
Answer:

A

Question 6

Question Type: MultipleChoice

Examine the following Blue Prism Process diagram:



The initial values for the 3 data items are displayed in the diagram above.

The expression in 'Decision A' is:

`InStr([City 1], "m") > 0`

The expression in 'Decision B' is:

`Upper([City 2]) = "NEWYORK OR Replace(22/07/2020", "/" . "-") = '22-07-2020'`

The expression in 'Decision C' is:

`TrimEnd([City 3]) = "Barcelona" AND Right([City 2],4) = "York"`

What will happen when the process flow executes?

Options:

- A-** The diagram will flow through the Calculation stage named 'A'
- B-** The diagram will flow through the Calculation stage named 'B'
- C-** From the information available, the outcome is unknown
- D-** The diagram will flow through the Calculation stage named 'C'

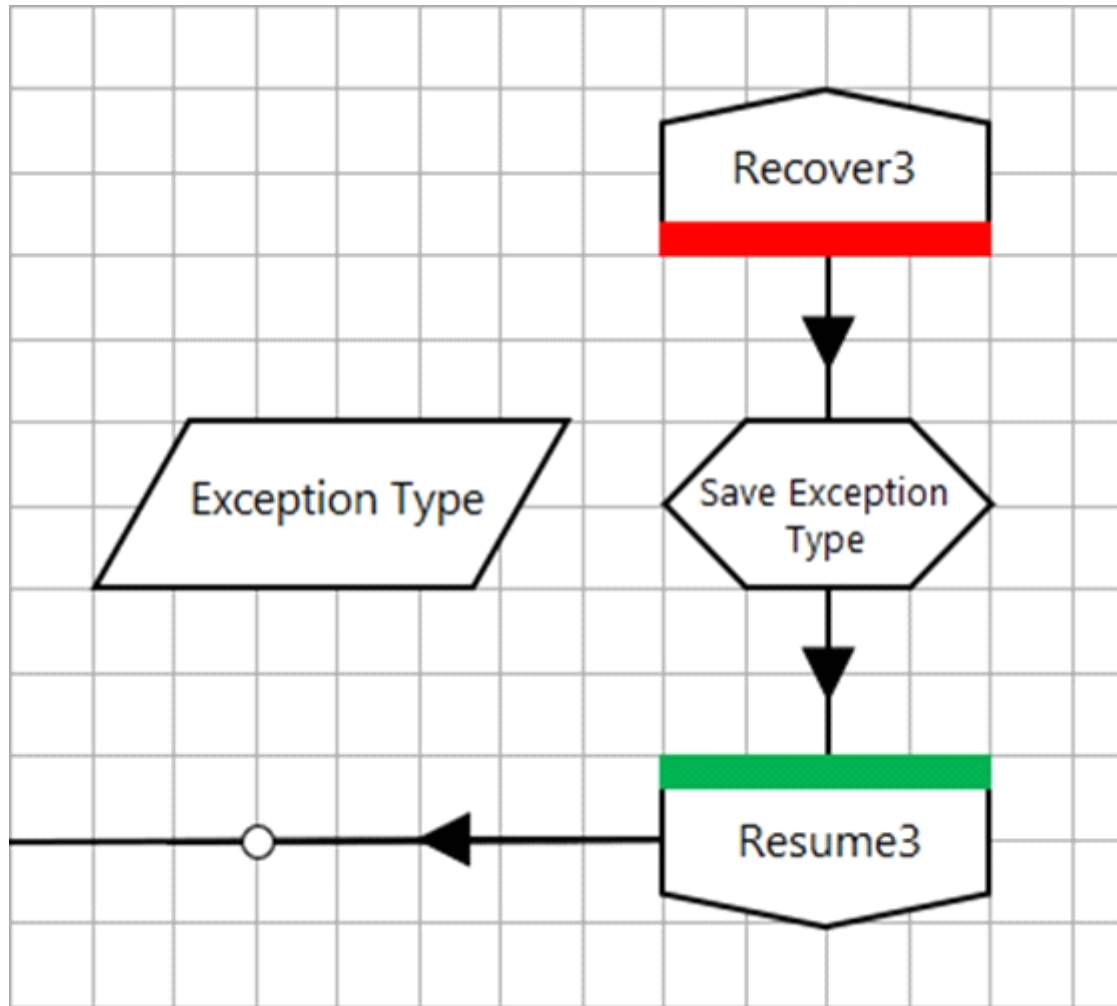
Answer:

D

Question 7

Question Type: FillInTheBlank

Examine the following recover flow taken from a Blue Prism Process:



The 'Exception Type' data item has no initial value and has a data type of text.

The Calculation stage 'Save Exception Type' will output the current exception type to the 'Exception Type' data item.

What expression would you use in the 'Save Exception Type' stage to achieve this?

Answer:

Explanation:

<https://bpdocs.blueprism.com/bp-6-8/en-us/helpExceptions.htm>

Question 8

Question Type: MultipleChoice

Which of the following indicates a case in a Work Queue is currently being processed?

A



B



C



D



Options:

A- Option A

B- Option B

C- Option C

D- Option D

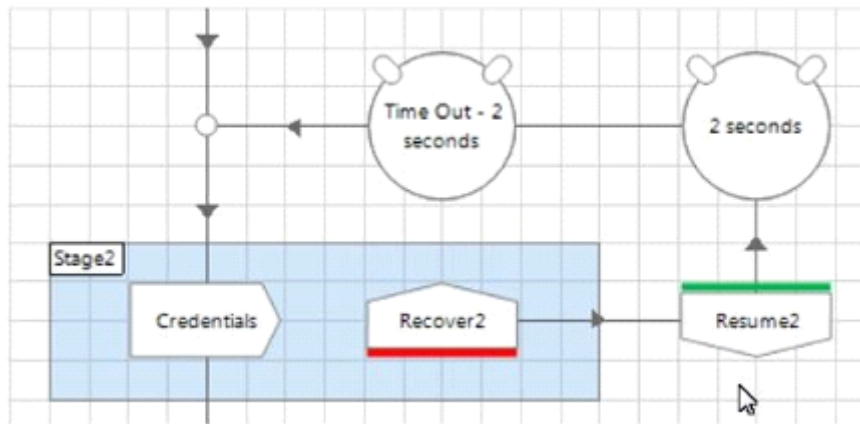
Answer:

C

Question 9

Question Type: MultipleChoice

Consider the following flow within an Object Studio action:



The developer of this flow found that writing some credentials to the target application sometimes failed with an exception even though the element exists on the screen. He found that simply catching the exception, waiting for 2 seconds and then retrying fixed the problem.

What problems do you see within the flow?

Options:

- A- The Resume stage is not within the same Exception Block as the Recover stage and therefore will not work
- B- There is a potential for an infinite loop if the Credentials' stage keeps throwing an exception for some unforeseen reason
- C- The credentials stage is a read stage not a write stage
- D- There is no need for a wait stage in the flow

Answer:

B

To Get Premium Files for AD01 Visit

<https://www.p2pexams.com/products/ad01>

For More Free Questions Visit

<https://www.p2pexams.com/blue-prism/pdf/ad01>

