



Free Questions for AND-803 by vceexamstest

Shared by Vincent on 06-06-2022

For More Free Questions and Preparation Resources

Check the Links on Last Page

Question 1

Question Type: MultipleChoice

It is recommended to add some features to your to reflect your professionalism, where it is not recommended to make your app simple.

Options:

A- False

B- True

Answer:

B

Question 2

Question Type: MultipleChoice

Google Play In-app billing is a monetization technique that allows you to sell products through your application during its run-time. Whether free of paid, your application can be used to sell some products to users. These products can be game items or any other

product that can be processed within your application.

Options:

A- True

B- False

Answer:

A

Question 3

Question Type: MultipleChoice

While adding analytics to your Android app, you should create the file `app/src/res/xml/global_tracker.xml` with the content which is illustrated in the following image: The `S{YOUR_TRACKING_ID}` will be replaced with your tracking ID. How do you get this tracking ID?

```
<?xml version="1.0" encoding="utf-8"?>
<resources>
  <string name="ga_trackingId" translatable="false"> ${YOUR_TRACKING_ID} </string>
</resources>
```

Options:

- A- This the same smart device ID.
- B- This ID is the same app ID which you got at AdMob web site for adding ad to your app.
- C- This ID is generated at Google Paly web site.
- D- This ID is generated at your page of Google analytics web site.

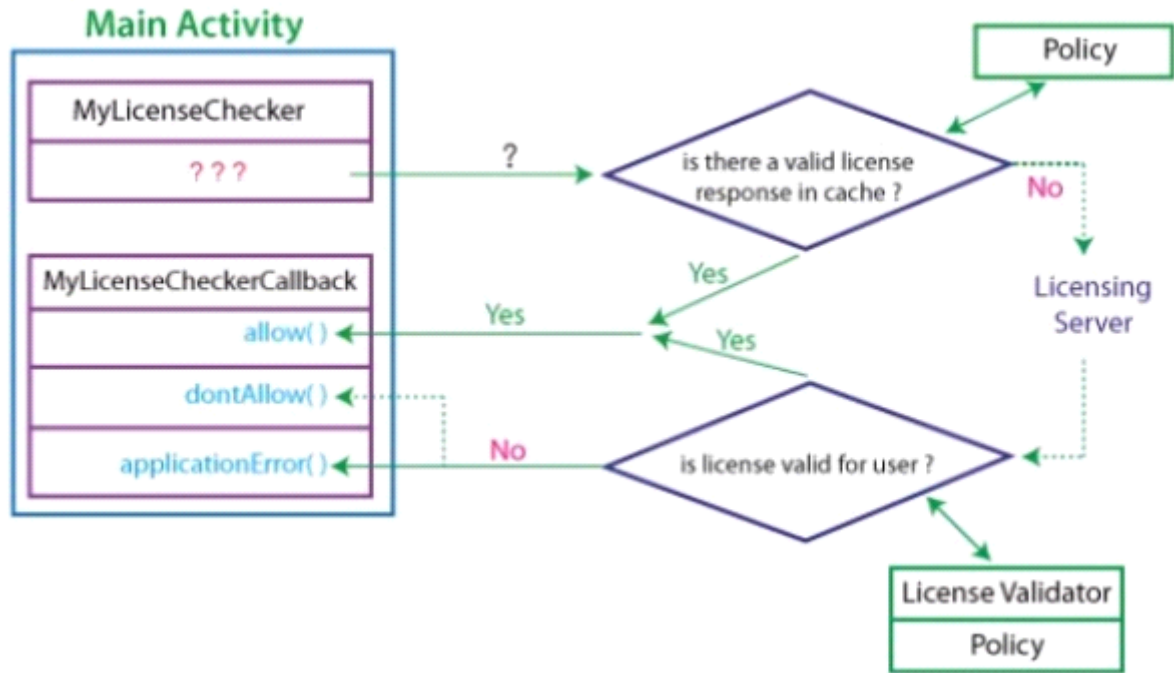
Answer:

D

Question 4

Question Type: MultipleChoice

Check the following image, then select one of the following choices to fill out the missing part in Main Activity file.



Options:

- A- Certificate Key
- B- CheckAccess()
- C- PolicyValidator()

D- LicensValidator

Answer:

D

Question 5

Question Type: MultipleChoice

Using the LVL (License Verification Library) in your Android application code requires using one main class: LicenseChecker, and there is no need to using the LicenseCheckerCallback class.

Options:

A- False

B- True

Answer:

A

Question 6

Question Type: MultipleChoice

Google Play licensing service does not determine itself if a given user with a given license was granted access to your application. Rather, this responsibility is left to a Policy implementation that you provide in your application.

Options:

A- False

B- True

Answer:

B

Question 7

Question Type: MultipleChoice

Why you should add the following code to Manifest.xml file for your app?

```
<uses-permission android:name="com.android.vending.CHECK_LICENSE" />
```

Options:

- A- This code allows internet connection for your app.
- B- This code allows your app to publish to Google Play.
- C- This code requests your GPS location.
- D- This code requests the licensing permission in your application.

Answer:

D

To Get Premium Files for AND-803 Visit

<https://www.p2pexams.com/products/and-803>

For More Free Questions Visit

<https://www.p2pexams.com/android/pdf/and-803>

