



**Free Questions for [GE0-703](#) by [vceexamstest](#)**

**Shared by [Casey](#) on [06-06-2022](#)**

**For More Free Questions and Preparation Resources**

**[Check the Links on Last Page](#)**

## Question 1

---

**Question Type:** MultipleChoice

---

Refer to the CTI Property tab in the Provisioning IVR profile section in the EMPS. The Default Route Number is used when \_\_\_\_\_.

### Options:

---

- A-** IVR Server is unable to contact the Solution Control Interface (SCI)
- B-** IVR Server is unable to contact the Universal Routing Server (URS), or when the URS is unable to find an agent number to which it can route the call
- C-** IVR component, specifically Genesys Queue Adapter (GQA), cannot communicate with SCS.
- D-** IVR Server component cannot communicate with the Web Server

### Answer:

---

B

## Question 2

---

**Question Type:** MultipleChoice

---

Is it necessary to declare and configure IVR-TServer in CME when the IVR is in a Behind configuration? Choose the best statement.

**Options:**

---

- A-** It is not necessary to declare it in CME
- B-** It must be declared to configure the IVR Server options (gli\_server\_group\_1, IServer et IServerGLMSap)
- C-** It must be declared because it is a part of IVR Server. But it have not to be configured

**Answer:**

---

B

## Question 3

---

**Question Type: MultipleChoice**

---

In most deployment options, the IVR Server Client or Genesys Queue Adapater (GQA) resides on the \_\_\_\_\_.

**Options:**

---

- A- IP Communications Server
- B- Element Management Provisioning System
- C- Web Server
- D- Configuration Server

**Answer:**

---

A

## Question 4

---

**Question Type:** MultipleChoice

---

Which of the following statements regarding log levels for GVP components is NOT correct?

**Options:**

---

- A- Log levels can be set via the EMPS.
- B- Log levels can be set through the VCS/IPCS Monitor (9810 Website)
- C- Log levels can be set through the IIS 5.0/6.0 Management Console.

**D-** VCS/IPCS Configuration through the GVP.ini file

**Answer:**

---

B

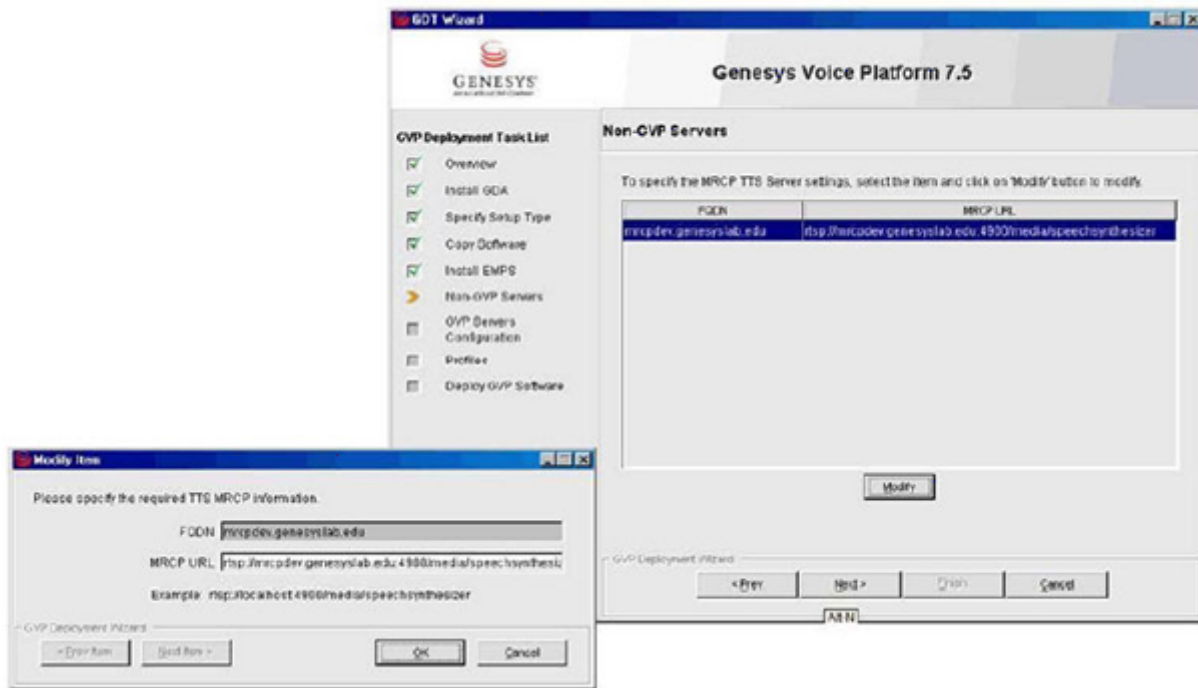
## **Question 5**

---

**Question Type: MultipleChoice**

---

Refer to the TTS: MRCP Configuration screen. Your GVP deployment requires Text to Speech (TTS) using MRCP. During GVP installation, you will be presented with this screen. What needs to be done?



## Options:

- A-** The MRCP URL value, Localhost needs to be replaced with the fully qualified domain name (FQDN) of the MRCP server and then click Next to continue
- B-** Nothing, everything looks fine. Click Next to continue
- C-** Delete the MRCP URL and then click Next to continue

**D-** The installation has completed. Just click Cancel to end the installation

**Answer:**

---

A

## Question 6

---

**Question Type: MultipleChoice**

---

What is the maximum size and number of files that can be locally cached using Cnlnet?

**Options:**

---

**A-** No limit and 8,192 files

**B-** No limit and 65,536 files

**C-** 1 GB and 16,384 files

**D-** 4 GB and 16,384 files

**Answer:**

---

D

## Question 7

---

**Question Type:** MultipleChoice

---

The default directory where Code Tracer accesses the asp or jsp files from is \_\_\_\_\_.

### Options:

---

- A- C:\inetpub\wwwroot
- B- C:\inetpub\wwwroot\Code Tracer
- C- C:\Program Files\GCT\Voice Platform Studio\Code Tracer
- D- C:\Program Files\GCT\Voice Platform Studio\TEMP

### Answer:

---

D



**To Get Premium Files for GE0-703 Visit**

**<https://www.p2pexams.com/products/ge0-703>**

**For More Free Questions Visit**

**<https://www.p2pexams.com/genesys/pdf/ge0-703>**

